

CRETE^{RX}™

Concrete & Terrazzo
Maintenance System

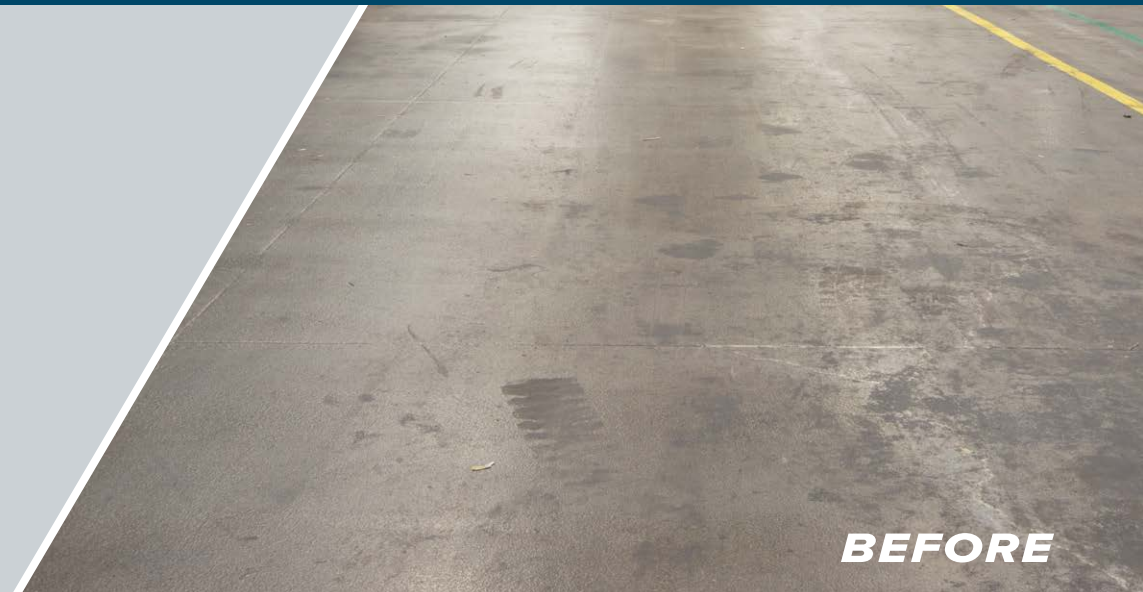


BETCO®

The Right Prescription

Prescribing Excellence in Concrete and Terrazzo Floor Maintenance

Crete Rx™ offers cleaning professionals and facilities with the ultimate in flexibility and simplicity to protect and maintain pristine appearance levels on cementitious floors. Crete Rx accomplishes this through offering 2 prescription pathways to better-looking floors, with a impressive gloss and stain resistance in less time.



BEFORE



BEFORE



AFTER
Crete Rx™ Honing
and Polishing System



AFTER
Crete Rx™ Cleaning
and Coating System



TWO PRESCRIPTIONS



Both systems feature a streamlined product line with reformulations for easier use, improved longevity, and better improvement of gloss!

**NEW! Crete Rx™
Cleaning and Coating System**

- **Routine Maintenance**
Daily Cleaning, Burnishing
- **Interim Maintenance**
Top Scrub and Recoat
- **Restorative Maintenance**
Strip and Refinish

**Traditional Crete Rx™
Honing and Polishing System**

- **Routine Maintenance**
Daily Cleaning, Burnishing
- **Interim Maintenance**
Polishing
- **Restorative Maintenance**
Stain Remediation, Honing and Polishing



One Program, Two Pathways

Choose What's Right for You

Crete Rx™ offers non-polishing products and procedures for a simple, more accessible route to maintenance and gloss, or honing and polishing products and procedures for a more robust route to maintenance and gloss.



PRESCRIPTION ONE

Cleaning & Coating System

	<p align="center">ROUTINE DAILY CLEANING</p> <p>Simply use a Betco® floor cleaner, like Daily Scrub SC or pH7, in an automatic scrubber with a red pad.</p> <p>Optional Burnishing <i>Burnish using a hog's hair lite pad to easily remove black heel marks, scuffs and scratches, leaving a wet look gloss.</i></p>	<p align="center">INTERIM TOP SCRUB & RECOAT</p> <p>To restore high gloss with extended protection, apply 1 coat of LiquiShield after top scrubbing. Then, burnish using a hog's hair lite pad.</p>	<p align="center">RESTORATIVE STRIP & REFINISH</p> <p>Apply LiquiStrip to quickly and easily remove even permanent coatings. Then apply 2 coats of LiquiShield before burnishing with a hog's hair lite pad.</p>

Coating concrete and terrazzo with a guard adds gloss and substantial protection against wear, stain, and etch. Achieving better-looking floors is easier and quicker than ever!

Minimal Equipment

Only a burnisher and automatic scrubber are needed, so little or no investment is required upfront.

Versatility

This prescription is compatible with pre-polished, non-polished, and previously coated concrete and terrazzo floors.

Familiar Procedures

A strip and recoat cycle similar to resilient tile is employed, which minimizes and simplifies training.

Immediate Results

A shortcut to shine, this system requires less intensive labor, delivering gloss and heavy stain protection in just 2 coats.



LIQUISHIELD

Water-Based Concrete Guard

- Easier to apply with low VOCs and odor
- Breathable coating improves gloss and will not peel, flake, or discolor
- Excellent stain and etch protection rating



LIQUISTRIP

Stripper for Permanent Coatings

- Concentrated solvents easily remove permanent guards without diamond tooling
- Non-flammable and low odor
- Leaves floors clean, film-free, and ready to coat

Honing & Polishing System



**ROUTINE
DAILY CLEANING**

Improve gloss and protection while daily cleaning with Densiclean and an SI Pad.

Optional Burnishing

Now with an even better burnishing response, using SI pads significantly pops gloss while strengthening the surface.

**INTERIM
POLISHING**

Polish with the Polishing Tool to restore the gloss barrier, then clean and apply Stain Defense. Burnish using an SI Pad.

With advanced technology at every stage, floors are mechanically ground, honed, and polished with bonded abrasives to cut and refine the surface. The results are exceptionally durable and low maintenance!

Lower Overall Cost

Even with investment into a concrete polisher, upfront costs are offset over time without annual or semi-annual recoats.

Stain Remediation

Completely remove staining and etching in problem areas for the same distinctness of image across the entire floor.

Seamless Innovations

Innovative penetrating chemistries and honing and polishing tools provide the same results as competitive programs in fewer steps.

Lasting Results

Floors are less susceptible to wear, stains, etching, scuffs, and scratches over time, even with very heavy foot traffic or forklift traffic.



DENSICLEAN

Cleaner with Densifier

- Maintains hardness while suspending the toughest soils
- Free lime content is greatly reduced
- Less labor time spent on dust mitigation



SEALANT INFUSED (SI)

Cleaning and Burnishing Maintenance Pads

- Continually fills porous concrete with sealant, pushing the sealant into the concrete itself
- Circumvents the need for a topical film
- Provides excellent protection and deep gloss



STAIN DEFENSE & POLISHING

Stain Defense Penetrating Sealer and Polishing Tool

- Penetrating polymers seal off open pores
- Completely fills pores to prevent stain and etch
- Works together with Polishing Tool to create a uniform protective surface

Honing & Polishing System



RESTORATIVE

HONING & POLISHING

To repair excessive wear, apply LiquiGrind and hone using the Honing Tool, then clean.

Apply Densifier and polish using the Polishing Tool. Clean, apply Stain Defense, and burnish using an SI Pad to ensure superior “Crete Gloss”.

STAIN REMEDIATION

For smaller areas, use a floor machine with a Counter-Rotating Plate (CRP) or an automatic scrubber with a Tool Adapter Pad (TAP).

Follow the steps for restorative maintenance.



LIQUIGRIND & HONING

Honing Compound and Honing Tool

- Proprietary nanoparticle abrasives for increased cutting effectiveness
- Easily removes excessive wear and etching with Honing Tool
- Penetrates porous concrete and terrazzo



CONCRETE STAIN REMOVAL KIT

Ready-to-Use Kit

- Convenient kit streamlines the process
- Quart sizes for better portability
- Contains LiquiGrind, Densifier, and Stain Defense



DENSIFIER

Densifying Compound

- Nanoparticle silicate penetrates surface
- Hardens and strengthens floors
- Improves abrasion, wear, and chemical resistance



TOOL ADAPTOR PAD (TAP)

Universal Adapter Pad

- Suitable for autoscrubbers up to 32”
- Suitable for 17” and 20” floor machines
- Double-sided hook-and-loop attachment for Crete Rx™ tools



STAIN DEFENSE & POLISHING

Stain Defense Penetrating Sealer and Polishing Tool

- Penetrating polymers seal off open pores
- Completely fills pores to prevent stain and etch
- Works together with Polishing Tool to create a uniform protective surface



COUNTER ROTATING PLATE (CRP)

Universal Rotating Plate

- Enhances performance of floor machines on small areas and in stain remediation
- Adds 26 Lbs and 960 RPM of counter rotating motion
- Universal clutch plate for use with floor machines

PRODUCTS	PRODUCT NAME	Crete Rx™ MAINTENANCE SYSTEM		COVERAGE RATE	SKU #	SIZE
		CLEANING & COATING	HONING & POLISHING			
	Crete Rx™ LiquiGrind		✓	Up to 1,000 sq. ft. per gallon	167005-00	5 Gal. Pail
	Crete Rx™ LiquiShield	✓		3,000 - 4,000 sq. ft. per gallon	167904-00	4 - 1 Gal. Bottles
	Crete Rx™ LiquiStrip	✓		Concentrate 1:3	167804-00	4 - 1 Gal. Bottles
	Crete Rx™ Densifier		✓	Up to 2,000 sq. ft. per gallon	167105-00	5 Gal. Pail
	Crete Rx™ Stain Defense		✓	Up to 4,000 sq. ft. per gallon	167205-00	5 Gal. Pail
	Crete Rx™ Densiclean		✓	Concentrate 1:256	67912-00 67947-00	12 - 32 oz. Bottles 4 - 2 Liter FastDraw®
	Crete Rx™ Concrete Stain Removal Kit		✓	Ready-to-Use	92411-00	12 - 32 oz. Bottles
TOOLS						
	Crete Rx™ Honing Tool		✓	Up to 4,000 sq. ft. per tool	E84133-00	3 - Tools / c.s.
	Crete Rx™ Polishing Tool		✓	Up to 8,000 sq. ft. per tool	E84134-00	3 - Tools / c.s.
	Crete Rx™ Reset Tool		✓	Up to 2,000 sq. ft. per tool	E84132-00	3 - Tools / c.s.
	Crete Rx™ Counter Rotating Plate (CRP)		✓	N/A	E84143-00	1 - 17" / 20" Compatible
	Crete Rx™ Tool Adapter Pad (TAP)		✓	N/A	E80001-00	1 - 17" / 20" Compatible
CLEANING & BURNISHING PADS						
	Crete Rx™ SI Cleaning Pads		✓	2,000 sq.ft per tool	E84116-00 E84117-00 E84120-00	16" Cleaning Pads - 5 / c.s. 17" Cleaning Pads - 5 / c.s. 20" Cleaning Pads - 5 / c.s.
	Crete Rx™ SI Burnishing Pads		✓	2,000 sq.ft per tool	E84127-00	27" Burnishing Pads -5 / c.s.

Concrete Polishers

Betco can provide recommendations for concrete polishers that have been proven to work with the program. We will also qualify equipment of your choosing.



888-GO BETCO | betco.com

©2024 Betco Corporation
All Rights Reserved.
400 Van Camp Road
Bowling Green, Ohio 43402

Item #92390-92

