



E88049-00



# FIBERPRO<sup>®</sup> CARPET SPOTTER

## 3.5 Gallon Carpet Spotter Machine



## Operator and Parts Manual

# TABLE OF CONTENTS

SAFETY .....	3
MACHINE OPERATION .....	4 - 5
MACHINE DIAGRAM AND PARTS LISTING .....	6 - 9
WARRANTY .....	12

## IMPORTANT SAFETY INSTRUCTIONS

- \*When using a commercial spotter, basic precautions should be followed, including the following:
- \*Read all instructions before using this commercial spotter.

### SAVE THESE INSTRUCTIONS FOR FUTURE REFERENCE

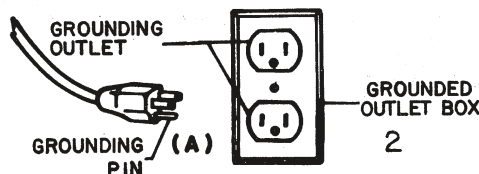
## WARNING

### To reduce risk of fire, electric shock, or injury:

- Do not use outdoors or on wet surfaces.
- Do not leave commercial spotter unattended when plugged in. Turn off the switch and unplug the electrical cord when not in use and before servicing.
- Do not allow to be used as a toy. Close attention is necessary when used near children.
- Use only as described in this manual. Use only manufacturer's recommended attachments.
- Do not use with damaged cord or plug. If commercial spotter is not working as it should, has been dropped, damaged, left outdoors, or dropped into water, return it to a service center before using.
- Do not pull or carry by cord, use cord as a handle, close a door on cord, or pull a cord around sharp edges or corners. Do not run commercial spotter over cord. Keep cord away from heated surfaces.
- Do not use extension cords or outlets with inadequate current carrying capacity.
- Turn off all controls before unplugging.
- Do not handle plug or commercial spotter with wet hands.
- Do not put any objects into openings. Do not use with any opening blocked, keep free of dust, lint, hair, and anything that may reduce airflow.
- Keep hair, loose clothing, fingers, and all parts of body away from openings and moving parts.
- Do not pick up anything that is burning or smoking, such as cigarettes, matches or hot ashes.
- Use extra care when cleaning on stairs.
- Do not use to pick up flammable or combustible liquids such as gasoline, or use in areas where they may be present.
- Store your commercial spotter indoors in a cool, dry area.
- Do not unplug by pulling on cord. To unplug, grasp the plug, NOT THE CORD.

THESE MODELS ARE GROUNDED, CONNECT TO A PROPERLY GROUNDED OUTLET ONLY - SEE GROUNDING INSTRUCTIONS.

## GROUNDING INSTRUCTIONS



This appliance must be grounded. If it should malfunction or breakdown, grounding provides a path of least resistance for electric current to reduce the risk of shock. This appliance is equipped with a cord having an equipment-grounding conductor and grounding plug. The plug must be inserted into an appropriate outlet that is properly installed and grounded in accordance with all local codes and ordinances.

**WARNING** - Improper connection of the equipment-grounding conductor can result in a risk of electric shock. Check with a qualified electrician or service person if you are in doubt as to whether the outlet is properly grounded. Do not modify the plug provided with the appliance - if the plug will not fit the outlet, have a proper outlet installed by a qualified electrician.

This appliance is for use on a normal 120 volt circuit, and has a grounded plug that looks like the plug illustrated in sketch A.

## Operating Instructions for Commercial Spotter

### WHEN THE MACHINE IS DELIVERED...

Check the carton carefully for signs of rough handling. Remove the machine from the carton. If the machine is damaged, notify the carrier immediately and request an inspection. Be sure to keep the carton, packing inserts, packing lists and carrier receipt until the inspector has verified your claim. Liability ceases when the shipment is picked up by the carrier, but our customer service staff will be glad to furnish any information needed in connection with the claim and will expedite the repair of the machine.



### BEFORE USING THE MACHINE

Read the manual carefully and completely before attempting to operate the unit. This manual has important information for the use and safe operation of this machine. Keep this manual handy at all times. The commercial spotter will provide years of satisfactory service if operated and maintained according to recommendations in the manual.



### WARRANTY

To protect your investment, promptly fill in the required information on the warranty card included with the unit. Then mail the card back.



### GENERAL PRECAUTIONS

**Follow these guidelines to ensure operator safety and to maintain equipment in running order.**

- Make sure the machine is plugged into an electrical outlet with the same voltage rating as shown on the nameplate of the machine. Do not attempt to plug a 115 volt machine into a 230 volt outlet or a 230 volt machine into a 115 volt outlet.

- Disconnect the power cord from the outlet before attempting maintenance or repair work.
- Do not leave machine connected to an electrical outlet when unattended.
- Never pull the machine by the cord or yank the cord from the receptacle. Replace a damaged cord immediately.
- If an extension cord is necessary, use a three conductor grounding cord – 12 gauge wire or heavier to prevent motor burnout and over-heating of wires.
- To avoid electric shock, do not expose to rain. Store indoors.
- To avoid fire, do not use machine in environments where combustible liquids, vapors or dust concentrations are present.



### WARNING

- Do not expose the machine to freezing temperatures. Do not use the machine for totally dry vacuuming.
- This machine is not fitted with a fine dust filter.
- Do not use citrus-based cleaners in this machine.
- Do not use cleaning chemicals in this machine except those recommended for commercial extraction equipment. The use of any chemical with abrasive additives voids the warranty.
- Do not break off or pull out the ground prong on the plug.
- Do not attempt repair on a warranted machine unless instructions to perform it by an authorized shop are obtained from the factory.
- Do not use any replacement parts except those specified on the parts list. Proper performance of the machine could be affected if substitutions are made.
- Use defoamer at all times to prevent damaging the vacuum motor.
- Do not use water in excess of 140° F (62° C).

**Failure to comply with the above warning instructions will void the warranty.**

## Operating Instructions for Commercial Spotter

### Filling the Spotter

- A. Disconnect the recovery tank from the solution tank and remove.
- B. Add water and/or chemicals to the solution tank.
- C. Replace the upper recovery tank and reconnect to the solution tank.

### Operating the Spotter

- A. Attach the solution feed line to the quick disconnect at the bottom of the machine.
- B. Attach the vacuum hose to the vacuum inlet (handle) above the recovery tank lid.
- C. Turn the 3-way switch to use either the pump and vacuum or the vacuum alone.  
(Allow approximately 30 seconds for the pump to prime.)
- D. Use the hand tool to spray and recover the solution.
- E. The float shut-off will disable the suction of the unit when the recovery tank is full. The operator will notice a distinctive change in the sound of the vacuum motor when the shut-off is activated. Empty the recovery tank to resume cleaning.



Disconnect tanks



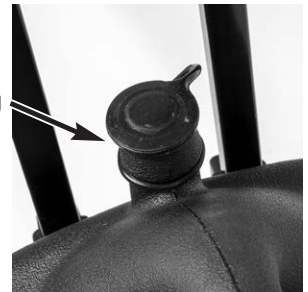
Attach vacuum hose



3-way switch

### Emptying the Recovery Tank

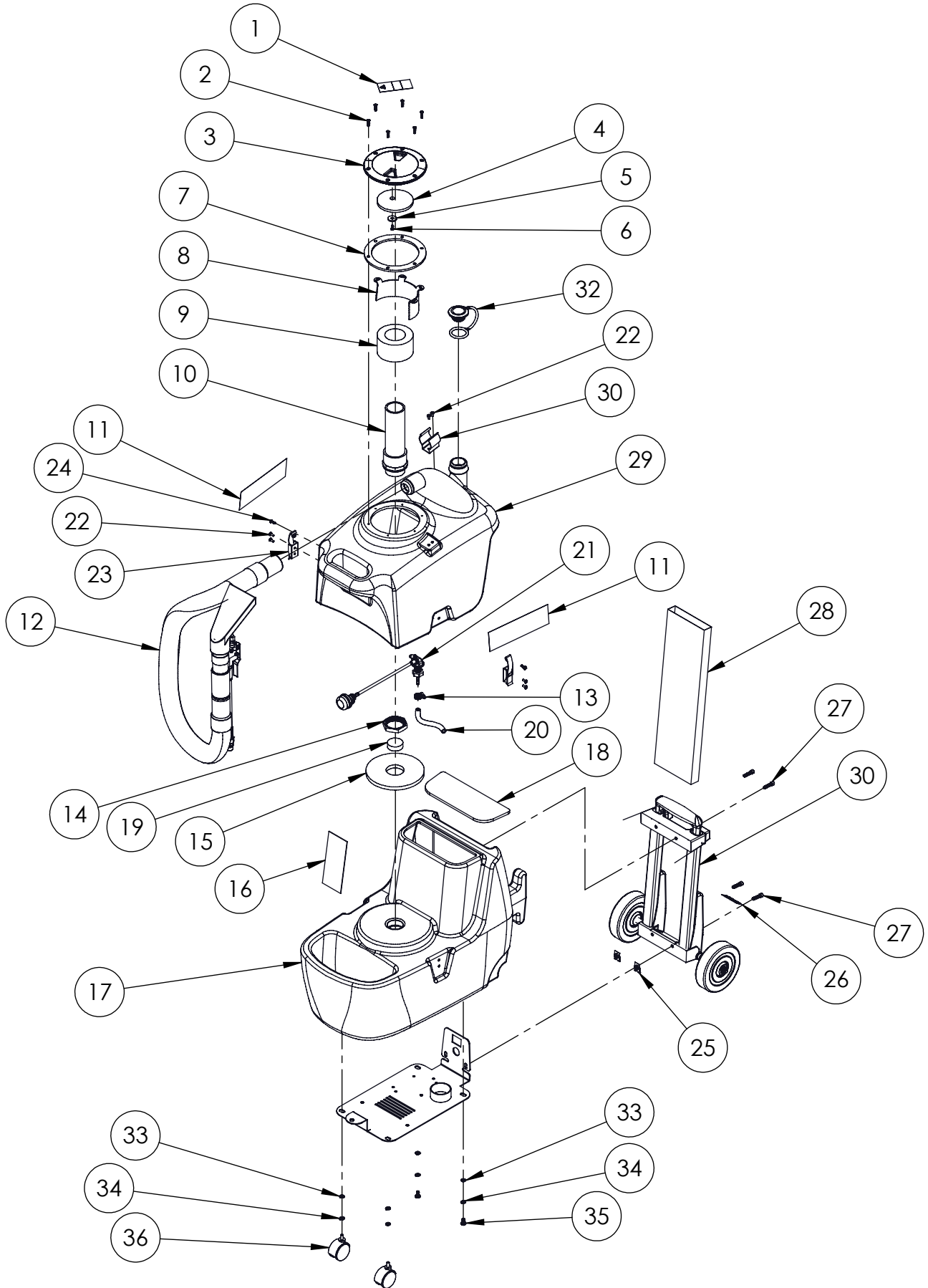
- A. Disconnect the solution line and vacuum hose.
- B. Unlatch the recovery tank from the base of the unit and remove.
- C. Remove the drain plug.
- D. Drain tank over suitable outlet for wastewater.
- E. Rinse tank after each use.
- F. Remove the recovery tank lid when storing to allow the recovery tank to dry.



Drain plug

Basic Troubleshooting		
Problem	Possible Cause	Solution
No Spray	Pump is not primed.	Depress lever on hand tool to release pressure.
Low Solution Flow	Solution tank level is low.	Refill solution tank and empty recovery tank.
	Clogged filter.	Clean screen filter on the hose in the solution tank.
	Clogged spray jet.	Clean the spray jet in the hand tool.
Low Suction	Recovery tank is full.	Empty recovery tank.
	Clogged hand tool.	Clean hand tool and hose.
	Excessive foam in recovery tank.	Add defoamer to recovery tank.

# SPOTTER ASSEMBLY DIAGRAM

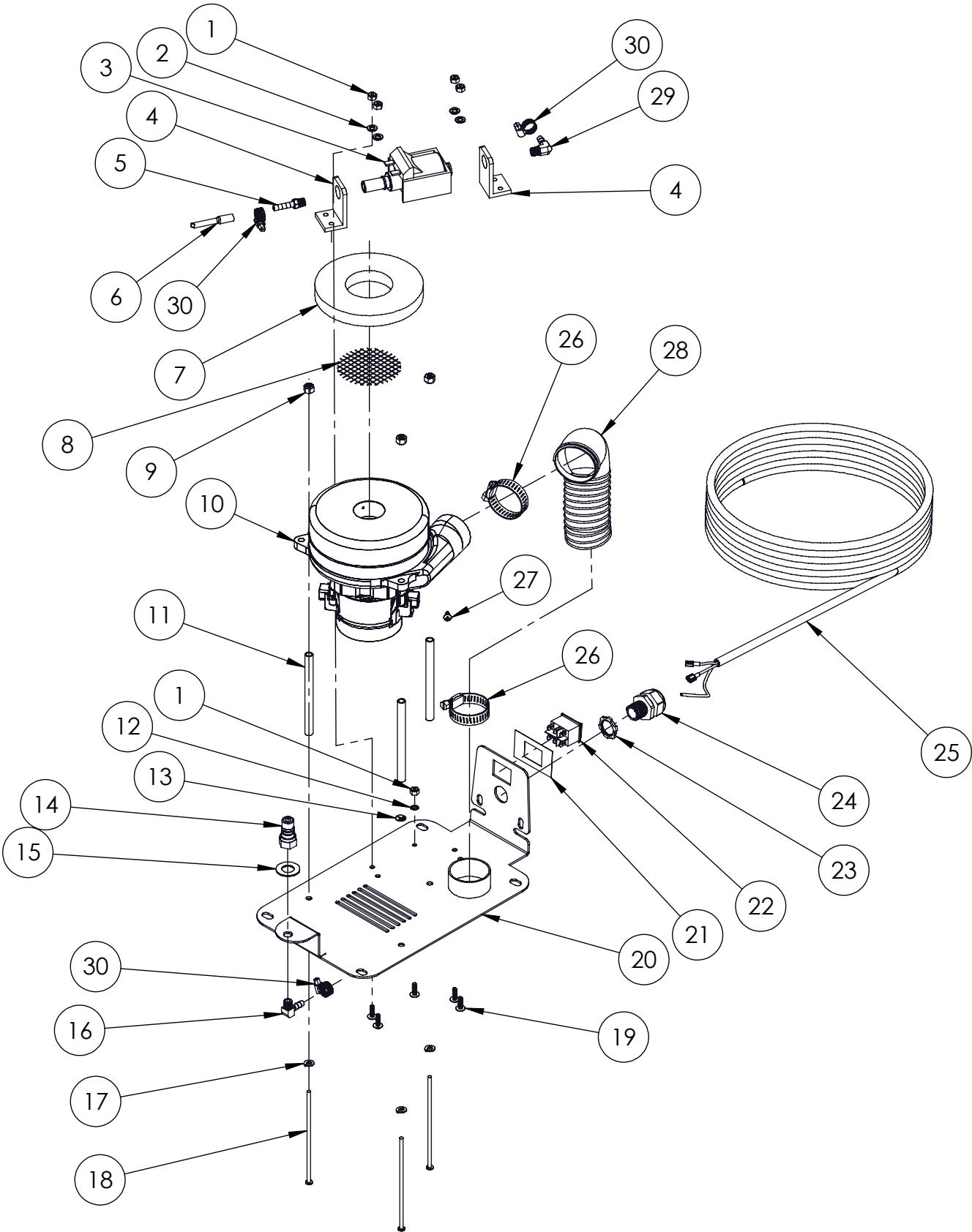


## SPOTTER ASSEMBLY PARTS LIST

ITEM#	PART #	DESCRIPTION	QTY.
1	E84453	LABEL, DEFOAMER WARNING	1
2	E84107	SCREW, FLAT HD, #8 x 0.750 LG, PHIL, ZINC	6
3	E82009	LID, 4.0 in, CLEAR W/BLK RING, SPOTTER	1
4	E85586	DISK, SHUT OFF, 0.250 x 3.500 OD, CLEAR ACRYLIC	1
5	E85584	WASHER, FLAT, #6 x 0.625 OD, SS	1
6	E85585	SCREW, PAN HD, #8-18 x 0.500 LG, PHIL, SS	1
7	E82010	GASKET, 4.60 ID x 6.00 OD, 0.188 THK	1
8	E88784	DEFLECTOR, SPOTTER	1
9	E85580	FLOAT RING, VACUUM SHUTOFF	1
10	E84457	STANDPIPE, SPOTTER ASSEMBLY	1
11	E84452	LABEL, BETCO, 3.5 gal SPOTTER	2
12	E84106	HOSE ASSEMBLY, RCP 10 ft, SPOTTER WITH TOOL	1
13	E85628	CLAMP, 1/4 WORM GEAR, SAE SIZE 4, SS	1
14	E85686	NUT, LOCK, DIE CAST 1.5	1
15	E85652	GASKET, 3/8 DONUT TANK SEAL, PVC	1
16	E84379	LABEL, FILL LINE INDICATOR	1
17	E84380	TANK, SOLUTION	1
18	E85567	GASKET, SOLUTION TANK, 0.250 THK, SPOTTER	1
19	E85633	FILTER, FOAM, 1.500 OD x 0.500 THK, SPOTTER	1
20	E84455	HOSE, 1/4 VINYL, WIRE-REINFORCED	8"
21	E84456	FILTER, SPOTTER SUBASSEMBLY	1
22	E84083	SCREW, THPH, #8-32 x 0.250 LG, BLK	6
23	E84076	LATCH, OVER CENTER W/KEEPER	2
24	E84084	SCREW, PAN HD, #8-32 x 0.500 LG, PHIL, ZINC	2
25	E85656	NUT, J-TYPE, 1/4-20, TINNEMAN	2
26	E84079	LABEL, WARNING	1
27	E85624	SCREW, HEX HD, 1/4-20 x 1.000 LG, SOCKET CAP	4
28	E84458	SLEEVE, SAFETY SIGN, YELLOW	1
29	E84383	TANK, RECOVERY	1
30	E85566	HANDLE, WHEEL ASSEMBLY	1
31	E85710	CLIP, SPRING, BLACK	1
32	E81281	PLUG, DRAIN HOSE	1
33	E84101	WASHER, FENDER, M6 x 20mm, 1.65mm THK, SS CIMEX	4
34	E84082	WASHER, LOCK, 1/4, SPLIT, ZINC	4
35	E85559	SCREW, PAN HD. 1/4-20 x 0.500 LG, PHIL, SS	2
36	E85558	CASTER, SWIVEL, 45MM OD, 1/4-20 x 0.750, Ps35	2



# MOTOR SUBASSEMBLY DIAGRAM





## MOTOR SUBASSEMBLY PARTS LIST

ITEM#	PART #	DESCRIPTION	QTY.
1	E84104	NUT, HEX, #10-24, NYLON INSERT, ZINC	5
2	E84101	WASHER, FENDER, M6 x 20mm, 1.65mm THK, SS CIMEX	4
3	E85553	PUMP	1
4	E85649	PUMP MOUNT	2
5	E85587	FITTING, Barb, Hose 1/4H 1/8 Male	1
6	E84085	HOSE, 1/4 BRAIDED, 250 PSI	8"
7	E84102	GASKET, FLAT, AIRWATT MOTOR, 5/8 in, NEOPRENE	1
8	E85653	SCREEN, VAC MOTOR, SPOTTER	1
9	E84105	NUT, HEX, 1/4-20, NYLON INSERT	3
10	E85684	MOTOR, VACUUM, 2-STAGE, 115V	1
11	E84077	MOUNTING POST, 4.585 Spotter Metal	3
12	E84451	WASHER, LOCK, #10, INT TOOTH, SS	1
13	E84080	LABEL, GROUND SYMBOL	1
14	E82005	FITTING, QD MALE, 1/8 x 1/8 FPT	1
15	E84103	WASHER, 0.434 ID x 0.750 OD, SEALED	1
16	E85618	FITTING, 90D ELBOW, 1/4 BARB x 1/8 BARB	1
17	E84082	WASHER, LOCK, 1/4, SPLIT, ZINC	3
18	E84078	SCREW, SHCS, 1/4-20 x 5.500, ZINC	3
19	E84450	SCREW, TRUSS HD, #10-24 x 0.625 LG, PHIL DRIVE	5
20	E83219	BASE PLATE, BOTTOM, WELDMENT	1
21	E84081	LABEL, SWITCH LABEL, 2.500 x 1.500	1
22	E85629	SWITCH, ROCKER	1
23	E83789	NUT, LUCK, 1/2 STEEL CONDUIT, APPLETON	1
24	E83203	STRAIN RELIEF, 1/2 NPT SCE	1
25	E84075	CORD, 20 FT, 18/3 SJTW	1
26	E85730	CLAMP, WORM GEAR, 2.500 ID, SAE SIZE 32, SS	2
27	E84100	SCREW, PAN H, #10-16 x 0.500 LG, TFT(B), ZINC	1
28	E85654	HOSE, VACUUM, 2.000 ID, Grey	8"
29	E85637	FITTING, 90D ELBOW, 1/8 MNPT x 1/4 HOSE BARB, NYLON	1
30	E85628	CLAMP, 1/4 WORM GEAR, SAE SIZE 4, SS	3
31	E84262	TERMINAL, RING, #10 x 22/18GA, (NOT SHOWN)	-
32	E84258	TERMINAL, QD, 1/4 FEMALE, 22-18 GA, RED (NOT SHOWN)	-
33	E84261	TERMINAL, SPADE, 1/4 MALE, 14-16AWG (NOT SHOWN)	-
34	E84300	WIRING HARNESS, PS35 (NOT SHOWN)	-
35	E84454	CABLE TIE 4 18# WHITE TIE (NOT SHOWN)	-





# BETCO US WARRANTY POLICY

## 10 year coverage

Subject to the conditions stated below, Betco warrants parts and labor on rotationally molded polyethylene tanks/housings and injection molded vacuum head assemblies to be free from defects in materials and workmanship for a period of ten years to the original purchaser.

## 3 Year Coverage

Subject to the conditions stated below, Betco warrants parts and labor on all other Betco components to be free from defects in materials and workmanship for a period of three years to the original purchaser.

- Lithium Ion battery for MotoMop™ is a full 3 years

## 1 Year Coverage

Subject to the conditions stated below, Betco offers a limited warranty on parts and labor on the following equipment: parts and accessories to be free from defects in materials and workmanship for a period of one year to the original purchaser.

- PowerUp™ 14 Upright Vacuum: #E29990-00
- Bac Pac Lite Vacuum: #85903-00
- FiberPRO® Floor Dryer: #85507-00
- WORKMAN™ Series Vacuums: #85024-00, #85025-00, #83012-00, #85027-00
- All Tools and Accessories
- All Battery Chargers
- Deep cycle batteries are pro-rated for 1 year

### **Allowable Travel Time Warranty Reimbursement:**

Eligible equipment: All battery and propane powered equipment products. Warranty period: 90 days from date of sale to the original purchaser. A maximum 180 mile round trip at 50 cents per mile will be allowed for warranty consideration.

### **Propane Machine Warranty:**

Kawasaki/Subaru engines are warranted by Kawasaki/Subaru for a period of 2 years against manufacturer defects. All other components (except wear items)\* are warranted by Betco for a period of 3 years.

**\*Wear Items exempt from Warranty consideration include but may not be limited to: power cords, transport wheels, vacuum bags, belts, squeegee blades, pad drivers, clutch plates, handle grips, filters, screens, throttle cables, brushes and carbon brushes.**

Subject to the conditions and exceptions stated in this warranty, Betco warrants the Betco products to be free from defects in material and workmanship, under normal use and service, for the periods listed under the warranty policy to the original purchaser. At any time during the warranty period, Betco will furnish replacement parts for the Betco parts to the original purchaser. Such parts will be furnished and charged including transportation costs, to the original owner through any Betco authorized Service Distributor. If the original part is returned within the warranty policy period from date of delivery for inspection by Betco and is found to be defective the owner will be credited for the cost of replacement parts plus shipping and handling. Replacement parts that have become defective through wear or abuse are not included in this warranty.

This warranty does not apply to damage or defect caused by accident, misuse, Negligence, fire, or to any Betco product which has been serviced or repaired by other than an authorized Betco Service Distributor or Betco factory personnel. This warranty is void if products are used for any purpose other than that which was intended. There are no other warranties expressed or implied. In no event shall Betco be liable for incidental or consequential damages or any damage to person or property. (Please note some states do not allow the exclusion or limitations for incidental and consequential damages).

