



# Cleaning Solutions

## Guide





# Professional Performance, Every Day



For almost 70 years, Betco® has created value through development of high-performing products and programs with proven success. Our customers have chosen Betco for decades, leveraging our expertise in providing powerful, reliable performance in the commercial cleaning industry.

A family-owned business, Betco has a deeply rooted entrepreneurial passion for developing the most dependable processes in the industry. With countless high-achieving products coupled with quality training and support, there's a reason we're our customers' preferred choice.



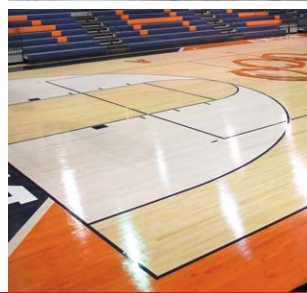
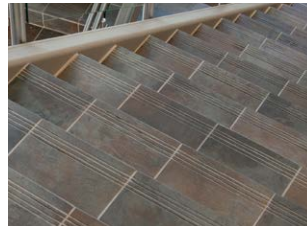
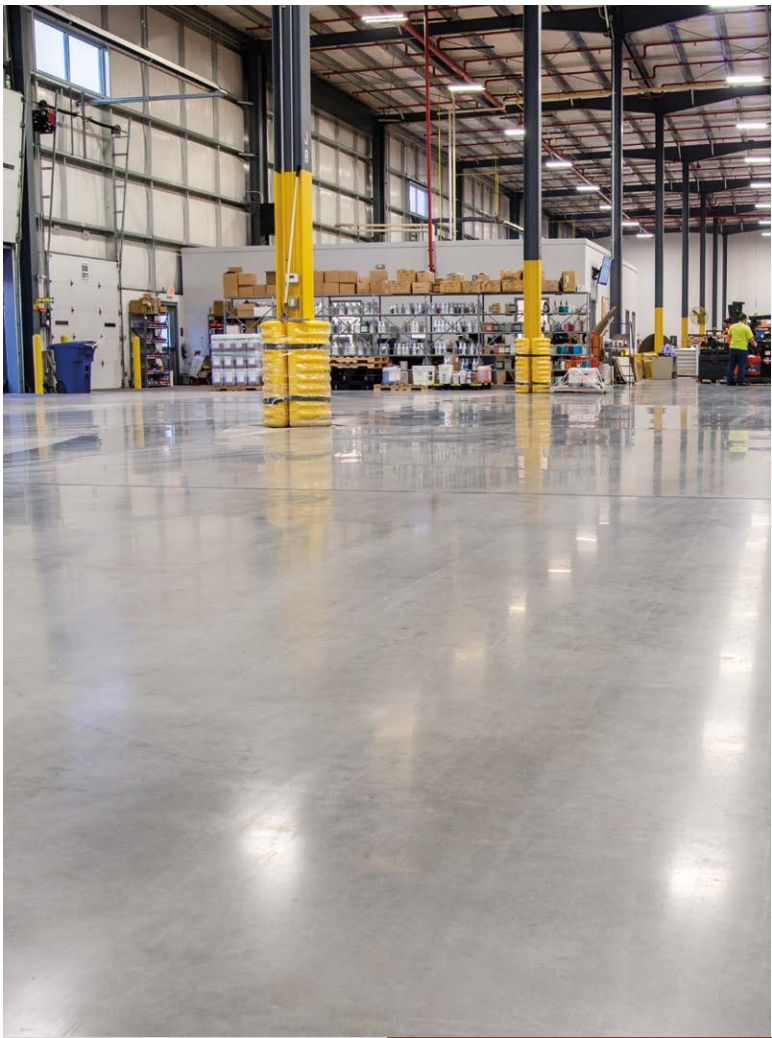


## What Do You Get When You Choose Betco?

- National leading brand quality with consistency and powerful performance
- Consultation-based cleaning solutions — turn-key programs that offer value and enhance facilities through right-size solutions
- Best-in-class on-demand training, education, and technology that reaches beyond the product

## Contents

<i>Floor Care</i> .....	4 - 6
<i>General Cleaning</i> .....	7 - 29
<i>Food Service / Warewash</i> .....	30 - 37
<i>Laundry</i> .....	38 - 42
<i>Dilution Control</i> .....	43 - 47
<i>Hand Hygiene</i> .....	48 - 52
<i>Equipment</i> .....	53 - 59
<i>Product Index</i> .....	60 - 64



*Improve the appearance of any substrate throughout each step in the life cycle of floor care*

*Innovative solutions, equipment, and procedures combine to boost productivity and save labor*

*High-performing products protect the flooring investment and reduce costly restoration*



## Floor Care Solutions

### The Leading Choice in Floor Care

From resilient tile to carpets, concrete to wood sports floors, and even grouted tile or stone, we have the right solution for every floor, whether you have time constraints for maintenance or want the optimal appearance level. With free best-in-class training, it's never been easier or more affordable to put your best floor forward with a customized program.



## Betco® Floor Finish Overview

MAINTENANCE FREQUENCY	GOOD	BETTER		BEST
<b>Low to Medium Maintenance</b> Burnishing <i>LESS</i> than 3x per week	<b>Glare®</b> <ul style="list-style-type: none"> <li>Durable</li> <li>High gloss</li> <li>Easy to use</li> <li>Low cost</li> </ul>	<b>Hard As Nails®</b> <ul style="list-style-type: none"> <li>Superior wear</li> <li>Resists dirt embedment</li> <li>Resists scuffing</li> <li>Easy to use</li> </ul>	<b>Finish 101®</b> <ul style="list-style-type: none"> <li>Low cost build</li> <li>Superior wear</li> <li>Low maintenance</li> </ul>	<b>Untouchable®</b> <ul style="list-style-type: none"> <li>Superior wear</li> <li>Resists dirt embedment</li> <li>Exceptional BHMR</li> <li>High build</li> </ul>
<b>Medium to High Maintenance</b> Burnishing <i>MORE</i> than 3x per week	<b>Photon Max™</b> <ul style="list-style-type: none"> <li>Excellent "off the mop" gloss</li> <li>Exceptional burnish response</li> <li>Superior Black Heel Mark Resistance (BHMR)</li> </ul>	<b>Hi-Tech®</b> <ul style="list-style-type: none"> <li>Excellent wet look gloss</li> <li>Exceptional burnish response</li> <li>Superior flexibility for alternate substrates</li> <li>Excellent build</li> </ul>		<b>Hybrid®</b> <ul style="list-style-type: none"> <li>High build / high wet look gloss</li> <li>Exceptional dirt embedment</li> <li>Superior detergent resistance</li> <li>Industry's most versatile finish</li> </ul>

## Specialty Functional Coatings

SPECIALTY	PRODUCT
GREEN CERTIFIED	<b>Green Earth® Floor Finish</b> Medium to High Maintenance
MAX CURE - 6 COATS/HOUR	<b>Betco® Express</b> Max Cure - Superior BHMR
HIGH SOLIDS TECHNOLOGY	<b>Betco® Best LM</b> Medium to High Maintenance
LOW GLOSS FORMULA	<b>Rescue TruMatte</b> Low Gloss Formula

SPECIALTY	PRODUCT
STATIC DISSIPATIVE	<b>Insulator™</b> Static Dissipative Floor Finish
ECONOMICAL SEALER	<b>Floor Sealer</b> Economical Floor Sealer
CEMENTITIOUS SEALER	<b>Sure Cure™</b> Urethane Fortified / Cementitious

### FLOOR FINISHES

#### Hybrid®

Industry's Most Versatile Floor Finish

3,000 sq. ft. per gallon

Item #	Size
66059-00	2 - 1.25 Gal. Quickcoat
66004-00	4 - 1 Gal. Bottles
660B5-00	5 Gal. Bag in Box
66055-00	55 Gal. Drum



**Versatile extended wear formula provides long lasting shine.**

- Extended wear formula
- Versatile, fits low to frequent maintenance applications
- Superior wear resistance for heavy traffic applications
- Use on all types of resilient flooring

#### Hard As Nails®

Black Mark Resistant Metal Interlocked Floor Finish

3,000 sq. ft. per gallon

Item #	Size
65959-00	2 - 1.25 Gal. Quickcoat
65904-00	4 - 1 Gal. Bottles
659B5-00	5 Gal. Bag in Box
65955-00	55 Gal. Drum



**Long-wearing hard film formula requires less maintenance.**

- Superior wearing, non-scuffing
- Self-leveling, self-sealing
- Resists dirt embedment
- Use on all types of resilient flooring

#### Betco Express® with SRT™

Fast Drying • Fast Curing Floor Finish • Max Cure™ Technology

5,000 sq. ft. per gallon

Item #	Size
65859-00	2 - 1.25 Gal. Quickcoat
65804-00	4 - 1 Gal. Bottles
658B5-00	5 Gal. Bag in Box
65855-00	55 Gal. Drum



**Fast dry/cure formula allows up to 6 coats in an hour.**

- Coats dry in 10-15 minutes
- Extremely low odor
- Superior black heel mark resistance
- Low to medium maintenance, can be burnished between coats
- Max-Cure Technology™ allows for efficient application

**FLOOR FINISHES**

**Untouchable® with SRT™**

Black Mark Resistant Metal Interlocked Floor Finish

3,000 sq. ft. per gallon



**Low maintenance floor finish with Scuff Resistant Technology™.**

- Superior black heel mark resistance
- High gloss with minimal burnishing
- Self-sealing
- Extremely low odor
- Superior floor protection

Item #	Size
60659-00	2 - 1.25 Gal. Quickcoat
60604-00	4 - 1 Gal. Bottles
606B5-00	5 Gal. Bag in Box
60655-00	55 Gal. Drum

**Hi-Tech®**

Metal Interlocked Floor Finish

3,000 sq. ft. per gallon



**Excellent wet-look shine after burnishing.**

- Best product for synthetic rubber floors
- Outstanding performance when paired with high-speed maintenance program
- Self-leveling and self-sealing
- For use on all types of resilient flooring

Item #	Size
61004-00	4 - 1 Gal. Bottles
610B5-00	5 Gal. Bag in Box
61055-00	55 Gal. Drum

**BetcoBest® LM High Build Floor Finish**

High Build Floor Finish with MMT/50™ Technology

2,500 sq. ft. per gallon



**Patented MMT/50™ formula combines high solid content and low viscosity for fewer coats.**

- Fewer coats reduce labor
- Maintains high gloss with minimal burnishing
- Extended wear formula for high traffic applications
- Built-in application indicator makes training easy
- For use on all types of resilient flooring

Item #	Size
64459-00	2 - 1.25 Gal. Quickcoat
64404-00	4 - 1 Gal. Bottles
64405-00	5 Gal. Pail
64455-00	55 Gal. Drum

**Glare®**

Metal Interlocked Acrylic Polymer Floor Finish

3,000 sq. ft. per gallon



**Extended wear, extremely high gloss formula requires less burnishing.**

- Durable extended wear provides superior protection
- Black mark and detergent resistant
- Self-leveling, excellent flow for easy application with little to no mop drag
- For use on all types of resilient flooring

Item #	Size
60504-00	4 - 1 Gal. Bottles
605B5-00	5 Gal. Bag in Box
60555-00	55 Gal. Drum

**Finish 101™**

Acrylic Polymer Floor Finish

3,000 sq. ft. per gallon



**Efficient build with fewer coats reduces labor.**

- Optimal value and performance
- Designed for low maintenance with minimal burnishing
- Deep gloss with bright, clear appearance
- Durable with higher cross link density
- For use on all types of resilient flooring

Item #	Size
69604-00	4 - 1 Gal. Bottles
696B5-00	5 Gal. Bag in Box
69655-00	55 Gal. Drum

**Photon™ Max with SRT™**

High Gloss Remarkable Response Floor Finish

3,000 sq. ft. per gallon



**Dramatic gloss response with frequent maintenance.**

- Scuff Resistant Technology™ provides superior black heel mark resistance
- Exceptional response to propane, electric, or battery-operated equipment
- Excellent "off the mop" gloss
- Superior soil resistance

Item #	Size
63204-00	4 - 1 Gal. Bottles
632B5-00	5 Gal. Bag in Box
63255-00	55 Gal. Drum

**Insulator™**

Static Dissipative Floor Finish

3,000 sq. ft. per gallon



**Dissipative Polymer Technology designed for conductive and dissipative floor care programs.**

- Meets ASTM F 150 for static control flooring
- Meets Mil-STD-3010B for electrostatic decay
- Meets ANSI/ESD STM97.2 for voltage in combination with a person through a floor system
- Low maintenance/high gloss

Item #	Size
63804-00	4 - 1 Gal. Bottles
63855-00	55 Gal. Drum

## FLOOR FINISHES / SEALERS / QUICKCOAT® APPLICATOR

### Rescue Gloss

LVT / Multi-Surface Floor Finish

2,000 - 3,000 sq. ft. per gallon



**Protects and extends lifespan of low maintenance floors.**

- Designed specifically for low and no maintenance floors
- Best adhesion in class
- Low maintenance, durable formula
- For use on LVT and most other flooring types

Item #	Size
168104-00	4 - 1 Gal. Bottles
1681B5-00	5 Gal. Bag in Box

### Rescue TruMatte

LVT / Multi-Surface Floor Finish

2,000 - 3,000 sq. ft. per gallon



**Protects and extends lifespan of low maintenance floors.**

- Best adhesion in its class
- TruMatte technology provides natural look
- Low maintenance, durable formula
- For use on LVT and most other flooring types

Item #	Size
168204-00	4 - 1 Gal. Bottles

### Green Earth® Floor Finish

Non-Zinc Floor Finish and Sealer

3,000 sq. ft. per gallon



**Versatile extended wear formula provides long lasting shine.**

- Extended wear formula
- Versatile, fits low to frequent maintenance applications
- Superior wear resistance for heavy traffic areas

Item #	Size
542B5-00	5 Gal. Bag in Box
54255-00	55 Gal. Drum

### Floor Sealer

Metal Interlocked Acrylic Polymer Floor Sealer

2,000 sq. ft. per gallon



**Provides durable uniform base to protect floor finishes.**

- Compatible with all water-based finishes or waxes
- High gloss enhances the appearance of the finish
- Acrylic polymer provides long-lasting, durable protection
- Perfect for providing a smooth surface on worn and damaged tiles
- For use on all types of resilient flooring

Item #	Size
60704-00	4 - 1 Gal. Bottles
607B5-00	5 Gal. Bag in Box
60755-00	55 Gal. Drum

### Sure Cure™

Acrylic / Urethane Sealer

2,000 sq. ft. per gallon



**Fortified waterbased urethane formula.**

- Adheres to a variety of hard surface floors
- Long-lasting protection and abrasion resistance
- Labor saving, high solids require fewer coats
- For use on concrete, resilient flooring, and stone

Item #	Size
60904-00	4 - 1 Gal. Bottles
609B5-00	5 Gal. Bag in Box
60955-00	55 Gal. Drum

### QuickCoat®

Finish Application System

2,000 sq. ft. per gallon



**Enhance productivity as much as 50%.**

- Eliminates messy mops and buckets
- Reduced product waste
- Ergonomic design reduces fatigue
- For use on all types of resilient flooring

Item #	Size
91904-00	1 - Applicator

## FLOOR STRIPPERS

### Extreme®

High Power • Fast Acting • Low Odor • No-Rinse Floor Stripper

Concentrate 1:5



**Penetrates and removes multiple coats with minimum labor.**

- Rinse free, has lower pH and requires no neutralization
- Extremely powerful
- Unlocks chemical bonds of acrylic and urethane floor finishes for efficient stripping
- Use on all types of resilient flooring

Item #	Size
18404-00	4 - 1 Gal. Bottles
184B5-00	5 Gal. Bag in Box
18455-00	55 Gal. Drum



**FLOOR STRIPPERS**

**Extreme® Ultra**

Ultra Concentrated • Low Odor Floor Stripper

Concentrate 1:20



**Powerful acting formula uses less product and works quickly to lower overall costs.**

- Ultra-concentrated, less packaging to dispose
- Low odor, reduces unpleasant and obnoxious stripping odors
- Rinse free, requires no neutralization or flood rinsing
- For use on all types of resilient flooring

Item #	Size
19412-00	12 - 32 oz. Bottles
19447-00	4 - 2 Liter FastDraw®
194B5-00	5 Gal. Bag in Box

**Emulsinator**

Aggressive No-Rinse Stripper

Concentrate 1:10



**Quickly removes many layers of floor finish in less time with less effort and no rinsing.**

- Powerful formula cuts through layers of old finish in minutes
- Rinse free, no alkaline residue
- Low foaming

Item #	Size
15104-00	4 - 1 Gal. Bottles
151B5-00	5 Gal. Bag in Box

**Ax-It® Plus**

Very Aggressive No-Rinse Stripper

Concentrate 1:10



**Powerful formula cuts through layers of old finish in minutes.**

- Low foaming
- Rinse free, no alkaline residue
- Use on all types of resilient flooring

Item #	Size
15404-00	4 - 1 Gal. Bottles
154B5-00	5 Gal. Bag in Box
15455-00	55 Gal. Drum

**Unlock™**

No-Rinse Floor Stripper

Concentrate 1:5



**Penetrates and removes multiple coats quickly with minimum labor.**

- Powerful stripping action
- Energy saving formula works with cold water
- Pleasant to use, no harsh ammonia or solvent odors
- Low foaming
- For use on most types of resilient flooring

Item #	Size
88804-00	4 - 1 Gal. Bottles
888B5-00	5 Gal. Bag in Box
88855-00	55 Gal. Drum

**Geraldine®**

Non-ammoniated Wax and Finish Stripper

Concentrate 1:10



**Unlocks molecular structure of waterbased finishes and sealers.**

- Powerful stripping action
- Pleasant to use, no harsh ammonia or solvent odors
- Extended suspension of emulsified particles eliminates costly restriping
- For use on all types of resilient flooring

Item #	Size
104B5-00	5 Gal. Bag in Box
10455-00	55 Gal. Drum

**Green Earth® Floor Stripper**

Non-Butyl • Non-Ammoniated Floor Stripper

Concentrate 1:5



**Specially formulated to remove Green Earth® and other conventional floor finishes.**

- Strips effectively without the use of butyl and ammonia
- Rinse free formula, low foaming
- No added fragrance or dyes

Item #	Size
54104-00	4 - 1 Gal. Bottles
541B5-00	5 Gal. Bag in Box
54155-00	55 Gal. Drum

**Ax-It®**

Baseboard Stripper

Ready-To-Use Aerosol



**Fast-acting gel dissolves soil and finish build-up.**

- Cleans and strips where a floor machine cannot reach
- Convenient and easy-to-use aerosol
- Rinse free formula leaves no alkaline residue

Item #	Size
09923-00	12 - Aerosol Cans



## FLOOR STRIPPERS / MAINTENANCE

### Recover

LVT / Multi-Surface Stripper

Concentrate 1:10



**Removes multiple coats of metal interlock acrylic floor finish.**

- Safe for LVT, sheet vinyl, linoleum, rubber and most all no/low maintenance floors
- Safely removes multiple coats of finish
- Low odor
- Low pH

Item #	Size
168404-00	4 - 1 Gal. Bottles
168B5-00	5 Gal. Bag in Box

### STG Cleaner

Daily Cleaner and Protectant

Concentrate 1:64



**Penetrates and protects porous grout, tile and natural stone with every cleaning.**

- Easy Clean Technology extends time between cleaning cycles
- Keep floors looking cleaner longer
- Can be used daily in restrooms, kitchens, retail spaces and many others!
- Proprietary blend of surfactants, emulsifiers and repellency aids

Item #	Size
168512-00	12 - 32 oz. Bottles
168547-00	4 - 2 Liter FastDraw®
168504-00	4 - 1 Gal. Bottles

### STG Penetrating Sealer

Stone, Tile, and Grout Penetrating Sealer

2,000 - 3,000 sq. ft. per gallon



**Top in class stain resistance and durable for up to 1 year in high traffic applications.**

- Semi-permanent protection from stain and soil embedment
- Effective on all types of tile, grout and natural stone surfaces
- The original beauty of your floor will shine through as it does not change the floor's appearance

Item #	Size
168604-00	4 - 1 Gal. Bottles

### Green Earth® Daily Floor Cleaner

Neutral pH Low Foaming Floor Cleaner

Concentrate 1:256



**Emulsifies, removes soil from highly polished floor surfaces.**

- Neutral pH
- Wets, emulsifies and suspends soils
- All ingredients are readily biodegradable
- Deodorizes surfaces

Item #	Size
53647-00	4 - 2 Liter FastDraw®
53604-00	4 - 1 Gal. Bottles
53655-00	55 Gal. Drum

### Reinforce

Daily Cleaner and Protectant

Concentrate 1:64



**Neutral cleaner continually repairs abrasions with daily cleaning.**

- Keeps floors looking cleaner longer
- Proprietary blend of surfactants, polymers and waxes
- Safe for LVT, sheet vinyl, rubber, linoleum and most flooring types
- Works on polished VCT floors to clean and repair minor scuffs and scratches

Item #	Size
168312-00	12 - 32 oz. Bottles
168347-00	4 - 2 Liter FastDraw®
168304-00	4 - 1 Gal. Bottles
168348-00	6 - 32 oz. Dosing Bottles

### Tile Clean

Deep Cleaning Hard Tile Cleaner

Concentrate 1:21



**Efficiently attacks heavy kitchen greases as well as soap scum and organic soils.**

- Non-fuming acid formula will not disturb grout or fixtures
- Foaming action provides superior "cling action" on vertical surfaces
- For use on ceramic tile, concrete, quarry tile, and restrooms

Item #	Size
11904-00	4 - 1 Gal. Bottles
11955-00	55 Gal. Drum



**FLOOR MAINTENANCE**

**Daily Scrub SC**  
Floor Cleaner

Concentrate 1:256 - 1:1024



**Streak-free performance even on heavily soiled floors.**

- Great for use with a mop and bucket or automatic scrubber
- Economical and versatile concentration
- Excellent for scrub and recoat programs at stronger dilutions
- Provides a durable clean; extends time between costly strip-outs

Item #	Size
18847-00	4 - 2 Liter FastDraw®
18848-00	6 - 32 oz. FastDose™

**Betco® One Step**  
High Speed Cleaner • Restorer

Concentrate 1:128



**One step product reduces labor cost and need to recoat.**

- Improves burnish response to repair scuffs and restore gloss
- Helps correct slippery floors and eliminates powdering
- Product certified for reduced environmental impact
- For use on resilient tile, linoleum, quarry tile, stone, terrazzo and vinyl tile

Item #	Size
61812-00	12 - 32 oz. Bottles
61804-00	4 - 1 Gal. Bottles
61847-00	4 - 2 Liter FastDraw®
61805-00	5 Gal. Pail

**Best Scrub**  
High Performance Top Scrub Floor Cleaner

Ready-To-Use



**For interim top scrubbing prior to finish recoat.**

- Effectively removes top coats of finish without attacking bottom layers
- Pleasant fragrance, no harsh odors
- Low foaming, virtually no foam in scrubber recovery tanks
- No residue, does not require flood rinsing

Item #	Size
67004-00	12 - 32 oz. Bottles
67005-00	5 Gal. Pail

**Easy Task™**  
Thermoplastic Spray Buff

Concentrate 1:5



**Effective repair of all floor finish types.**

- Versatile - the perfect product for use with conventional and high speed equipment
- Provides excellent lubricity to pad surface for a higher shine
- Regular use allows reduces stripping and rewaxing procedures by 75%

Item #	Size
60812-00	12 - 32 oz. Bottles
60804-00	4 - 1 Gal. Bottles

**pHerfect**  
Ice Melt Remover Floor Conditioner

Concentrate 1:15 - 1:54



**Dual performance formula penetrates and neutralizes in one step.**

- Perfect for entryways, resilient tile, terrazzo, ceramic tile and porcelain tile
- Formulated with neutralizing agents and surfactants to penetrate and clean tough soils and neutralize common ice melt ingredients
- Excellent floor conditioner after strip outs
- Leaves virtually no residue on the floor

Item #	Size
53304-00	4 - 1 Gal. Bottles

**pH7**  
Daily Floor Cleaner

Concentrate 1:64



**Dissolves and removes a wide variety of soils, leaving floors film free.**

- Neutral pH - Won't attack, haze, dull floor gloss or leave a film
- Restores shine to resilient tile floors
- Superior hard water performance
- Controlled foam, ideal for use in autoscrubbers, mop buckets, and spray bottles

Item #	Size
13804-00	4 - 1 Gal. Bottles
138B5-00	5 Gal. Bag in Box
13855-00	55 Gal. Drum
13827-00	275 Gal. Tote

**pH7 Ultra**  
Daily Floor Cleaner

Concentrate 1:256



**Dissolves and removes a wide variety of soils, leaving floors film free.**

- Neutral pH won't dull floor finish or leave a film
- Super concentrated for low end use cost
- Low foam - perfect for automatic scrubber applications
- Effective in hard water

Item #	Size
17870-00	6 - 32 oz. Bottles
17848-00	6 - 32 oz. FastDose™
17847-00	4 - 2 Liter FastDraw®
17805-00	5 Gal. Pail
17855-00	55 Gal. Drum

## CRETE RX™ POLISHED CONCRETE & TERRAZZO MAINTENANCE

### Crete Rx™ Liquigrind Ready-To-Use Honing Compound

Up to 1,000 sq. ft. per gallon

Item #	Size
167005-00	5 Gal. Pail



**Nanoparticle abrasive provides maximum coverage for increased efficiency.**

- For use on polished concrete
- Easily removes excessive wear and etching
- Works with honing tool to grind out wear and staining

### Crete Rx™ Densifier Ready-to-Use Densifying Compound

Up to 2,000 sq. ft. per gallon

Item #	Size
167105-00	5 Gal. Pail



**Improves abrasion and wear resistance along with improved chemical resistance.**

- For use on polished concrete
- Nanoparticle silicate chemistry strengthens and hardens polished concrete
- Aids in lowering concrete dusting
- Intended for use following honing compound for restorative maintenance procedures

### Crete Rx™ Stain Defense Ready-to-Use Penetrating Sealer

Up to 4,000 sq. ft. per gallon

Item #	Size
167205-00	5 Gal. Pail



**Penetrating polymers fill porous concrete to prevent stains and etch.**

- For use on polished concrete
- Creates uniform, continuous protective surface
- Resists staining and etching
- Interacts with sealant infused polymers

### Crete Rx™ Liquishield Concrete Guard

3,000 - 4,000 sq. ft. per gallon

Item #	Size
167904-00	4 - 1 Gal. Bottles



**Advanced protection against stain and etch.**

- Ideal for all polished concrete and terrazzo surfaces
- High gloss polymer formula
- Will not peel, flake, or discolor
- Resists scuffs, black marks, and soil
- Water-based formula

### Crete Rx™ Liquistrip Concentrated Stripper for Permanent Coatings

Concentrate 1:3

Item #	Size
167804-00	4 - 1 Gal. Bottles



**Water-based stripper formulated to remove permanent coatings.**

- Strips coatings without the use of diamond tooling
- Quickly removes permanent concrete guards and finishes
- Ultra-concentrated formula for low end user cost
- Rinse-free

### Crete Rx™ Densiclean Cleaner Concentrate with Densifier

Concentrate 1:256

Item #	Size
67912-00	12 - 32 oz. Bottles
67947-00	4 - 2 Liter FastDraw®
67955-00	55 Gal. Drum
67970-00	6 - 32 oz. Bottles



**For use on polished concrete.**

- Advanced cleaning formula with proprietary silicate chemistry
- Interaction with free lime in concrete cuts down on dust mitigation over time
- Suspends the toughest soils and maintains a safe pH

## CRETE RX™ SEALANT INFUSED CLEANING & BURNISHING PADS

Item #	Size	Item #	Size	Item #	Size
E84111-00	11" - 5 pads/cs.	E84115-00	15" - 5 pads/cs.	E84124-00	24" - 5 pads/cs.
E84112-00	12" - 5 pads/cs.	E84116-00	16" - 5 pads/cs.	E84127-00	27" - 5 pads/cs.
E84113-00	13" - 5 pads/cs.	E84117-00	17" - 5 pads/cs.		
E84114-00	14" - 5 pads/cs.	E84120-00	20" - 5 pads/cs.		



**Crete Rx™ Concrete Stain Removal Kit**

Ready-To-Use

Item #	Size
92411-00	12 - 32 oz. Bottles



**Combines all Crete Rx™ products in one ready-to-use kit.**

- Liquigrind removes wear and etching
- Densifier strengthens and hardens polished concrete
- Stain Defense penetrates open pores and creates a uniform continuous protective surface
- Convenient kit allows for spot stain remediation

**Crete Rx™ Reset Tool**

Up to 4,000 sq. ft. per tool

Item #	Size
E84132-00	3 - Tools / cs.



**Quickly smooths out rough, worn areas of polished concrete.**

- Abrasive strength "resets" neglected polished concrete floors
- Prepares polished concrete floors for honing
- Hook-and-loop attachment

**Crete Rx™ Honing Tool**

Up to 4,000 sq. ft. per tool

Item #	Size
E84133-00	3 - Tools / cs.



**Channels LiquiGrind particles and prepares concrete for polishing.**

- Hones concrete surface
- Removes imperfections and smooths surface
- Hook-and-loop attachment

**Crete Rx™ Polishing Tool**

Up to 8,000 sq. ft. per tool

Item #	Size
E84134-00	3 - Tools / cs.



**Pushes resin to fill pores, building a gloss barrier on concrete.**

- Tool is infused with sealant
- Effective in dry polish process
- Follows the honing step of the Crete Rx™ system
- Hook-and-loop attachment

**Crete Rx™ Tool Holder**

Item #	Size
E84130-00	3 - Tools / cs.



**Universal magnetic tool holder with hook-and-loop backing.**

- Accepts and organizes tools for Crete Rx™ system

**Counter Rotating Plate (CRP)**

Item #	Size
E84143-00	1 - 17"/20" Compatible



**Enhances performance and productivity of floor machines.**

- Adds 26 pounds of head pressure and 960 RPM with counter-rotating motion
- Allows floor machines to better remove stains and etches
- Produces higher depth of gloss
- Ultra-durable aluminum and iron construction

**Tool Adaptor Pad (TAP)**

Item #	Size
E80001-00	1 - 17"/20" Compatible



**Universal adapter pad gives autoscrubbers and floor machines Crete Rx™ capability.**

- Suitable for autoscrubbers up to 32"
- Suitable for 17" and 20" floor machines
- Double-sided hook-and-loop attachment for Crete Rx™ tools
- Indicators make it simple to identify where to place tools

## CARPET SPOTTERS

### FiberPRO® Spot Bet

All Purpose Spot and Stain Remover

Ready-To-Use

Item #	Size
42512-00	12 - 32 oz. Bottles



**Versatile cleaner effectively removes common stains.**

- Effective spotter for use in health care settings; removes betadine and iodine stains
- Quickly unlocks soil from fibers
- Removes most common stains

### FiberPRO® Red 'N' Brown Out

Red Stain • Tannin Debrowner Treatment • RTU

Ready-To-Use

Item #	Size
41918-00	12 - 16 oz. Bottles
41904-00	4 - 1 Gal. Bottles



**Powerful dual acid stain removal performance.**

- Eliminates browning caused by alkaline build-up from shampoo residue
- Dual acid formula removes difficult, stubborn stains
- Can be used as a final rinse after extracting
- For use on all types of carpet, rugs, and upholstery

### FiberPRO® Alkaline Conditioner

RTU • pH Neutralizer Treatment

Ready-To-Use

Item #	Size
41518-00	12 - 16 oz. Bottles



**Neutralizes acidic stains while lifting stain from carpet.**

- Residue free, rinses completely
- Protects carpet from long-term attacks from acidic stains
- Protects individuals from coming into harmful contact with treated carpeting
- For use on all types of carpet, rugs, and upholstery

### Green Earth® Citrus Carpet Spotter

Natural Gum and Grease Remover

Ready-To-Use

Item #	Size
41618-00	12 - 16 oz. Bottles



**Gel formula delivers powerful solvent cleaning directly to desired location.**

- Easy to use, thickened formula is easy to apply
- Clings to stain, providing elongated stain removing performance
- Rinses easily with water, will not leave residue
- For use on all types of carpet, rugs, and upholstery

### FiberPRO® P.O.-G

Paint, Oil and Greaser Remover

Ready-To-Use

Item #	Size
41718-00	12 - 16 oz. Bottles



**Powerful natural citrus solvents efficiently remove paint, grease, and oil.**

- Rinses easily and completely with water
- Extremely versatile, removes a wide variety of stains
- For use on all types of carpet, rugs and upholstery

### FiberPRO® Enzyme Deodorizer

Organic Stain Remover and Deodorizer

Ready-To-Use

Item #	Size
41818-00	12 - 16 oz. Bottles



**Eliminates persistent odors from vomit, blood, urine, smoke, and pet stains in carpet/upholstery.**

- Pleasant fragrance
- For use alone or in combination with appropriate\* cleaners for improved performance and added deodorization
- Enzymes within deodorizer eliminate source of odor

### FiberPRO® Gum Remover

Ready-To-Use

Item #	Size
00923-00	12 - 6.5 oz. Aerosol Cans



**Fast-freezing action hardens gum and wax for quick removal.**

- Convenient, easy-to-use aerosol
- Does not leave a residue
- Allows for a more efficient clean than solvents
- For use on most surfaces including carpet, rugs, and upholstery



**CARPET CARE**

**FiberPRO® TLC**  
Traffic Lane Cleaner Concentrate

Concentrate 1:20

Item #	Size
40604-00	4 - 1 Gal. Bottles



**Labor saving solvent quickly emulsifies the worst ground-in soil problems.**

- Economical, highly concentrated detergent solvent blend
- Can also be used as a booster for rotary and extraction methods
- For use on carpeting, excluding stain resistant carpeting

**FiberPRO® Es-Steam™**  
Low Foam Extraction Cleaner

Concentrate 1:256

Item #	Size
40247-00	4 - 2 Liter FastDraw®
40204-00	4 - 1 Gal. Bottles
40205-00	5 Gal. Pail
40255-00	55 Gal. Drum



**Highly concentrated formula delivers powerful cleaning action at an affordable price.**

- Rinses easily and leaves no residue
- Contains patented deodorizing counteractant, eliminates odors at the source
- Penetrates heavy soils
- For use on carpeting, excluding stain resistant carpeting

**FiberPRO® Extraction Cleaner**  
5th Generation Extraction Cleaner

Concentrate 1:256

Item #	Size
41204-00	4 - 1 Gal. Bottles



**Powerful low-foaming surfactant blend unlocks soil and dirt for easy removal.**

- Economical, highly concentrated formula
- Low residue, rinses freely so carpets stay cleaner, longer
- Contains patented deodorizing counteractant, eliminates odors at the source
- For use on all types of carpeting and upholstery, including stain resistant carpeting

**FiberPRO® BonBet™**  
Carpet Shampoo

Concentrate 1:8

Item #	Size
40804-00	4 - 1 Gal. Bottles



**Fast drying formula dries in less than one hour when used as directed.**

- Intended for use with dry or wet bonnet methods
- Powerful blend quickly removes oil, grease, and soils
- For use on all types of carpeting and upholstery, including stain resistant carpeting

**FiberCAP™ MP**  
Multi-Purpose Encapsulation Cleaner

Concentrate 1:10 - 1:32

Item #	Size
42004-00	4 - 1 Gal. Bottles



**Advanced polymer technology enhances soil entrapment, providing better release from carpet fiber.**

- Leaves carpets cleaner, longer
- Low moisture, fast drying
- Minimizes resoiling
- Multi-purpose, versatile cleaner

**FiberPRO® Foam Control**  
Liquid Defoamer

Concentrate 1:128

Item #	Size
40304-00	4 - 1 Gal. Bottles
40355-00	55 Gal. Drum



**Fast acting, breaks foam on contact.**

- Eliminates downtime and wasted effort in dumping recovery tanks
- Versatile, has many uses and can be used anywhere foaming is a problem
- Use in recovery tanks of extraction machines

## SPORTS ZONE® WATERBASED WOOD COATINGS

### StreetShoe® NXT

Waterbased High Traffic Wood Floor Finish

Up to 450 - 650 sq. ft. per gallon



**Waterbased system formulated specifically for high traffic wood floors.**

- Provides a clear finish that remains unmatched in durability
- Fastest cure available, 90% cured in 24 hours
- UV Inhibitor minimizes sunlight-related color changes
- Apply directly over stain, easy application

Item #	Size
B1664-4312	4 - 1 Gal. F-Style w/Catalyst
166405-00	5 Gal. Pail in Box w/Catalyst

### GymShoe®

Two Component Waterbased Sport Floor Finish

Up to 500 - 700 sq. ft. per gallon



**Exceptionally durable high-traffic sport floor finish.**

- Clear, non-yellowing urethane
- 24 hour pot life: once catalyzed, can be re-catalyzed
- Great shine, resists heel marks
- Fast drying, 2-3 hours
- Powders well during application
- Perfect for large sport complexes, higher education, retail and commercial spaces

Item #	Size
B1677-4312	4 - 1 Gal. F-Style w/Catalyst
167705-00	5 Gal. Pail in Box w/Catalyst

### Emulsion® PRO+

Advanced Oil and Water Wood Floor Finish and Sealer

Up to 450 - 550 sq. ft. per gallon



**Commercial grade self-leveling sealer and finish.**

- One-component extended pot life
- Ambering, enhances beauty of wood
- Is not OMU, non-flammable
- VOC Compliant in US and Canada
- Low odor

Item #	Size
B0675-4312	4 - 1 Gal. F-Style w/Catalyst
B0675-0512	5 Gal. Pail

### Player's Choice™ One

Clear Waterbased Sport Floor Finish

Up to 500 - 750 sq. ft. per gallon



**One component waterbased finish specially formulated for sports floor applications.**

- Exceptional durability
- Easy maintenance
- Excellent chemical and perspiration resistance
- Superior flow, leveling, and low foam formula
- Low, non-offensive odor

Item #	Size
B1659-4312	4 - 1 Gal. F-Style w/Catalyst
B1659-0512	5 Gal. Pail

## SPORTS ZONE® WOOD FLOOR MAINTAINERS

### Squeaky™ Floor Cleaner

Maintenance Cleaner for Wood Floors

Concentrate 1:4, 1:32, 1:64



**Tough on dirt, gentle on floors and cleans without leaving a residue.**

- Commercial-grade cleaner for all wood and laminate floors
- No dulling residue
- Excellent choice for routine cleaning
- Environmentally safe
- First step in TyKote® Dust-free Refinishing System

Item #	Size
B0695-4312	4 - 1 Gal. Bottles
B0695-0512	5 Gal. Pail

### Game Time Cleaner

Maintenance Cleaner for Wood Floors

Concentrate 1:64



**For use on sport and commercial wood floors.**

- Cleans and removes abrasive soils
- Fast drying
- Leaves no residue
- Restores traction for sports floors
- Versatile - use for daily and periodic maintenance

Item #	Size
B069747-00	4 - 2 Liter FastDraw®



**SPORTS ZONE® WOOD FLOOR MAINTAINERS**

**I.F.T Intensive Floor Treatment**  
Aggressive Wood Floor Cleaner

Concentrate 1:32

Item #	Size
B1111-0412	4 - 1 Gal. Bottles



**Aggressive cleaner, will easily remove ground-in dirt and much more.**

- Deep, intensive cleaning
- Effectively removes scuffs and black marks
- I.F.T. is the first step in a two-part cleaning process to prepare floors for TyKote® Dust-free Refinishing System

**Dust Mop Treatment**  
Use on Mops, Cloths, and Filters

Ready-To-Use

Item #	Size
03523-00	12 - 17 oz. Aerosol Cans



**Unique formula attracts dust and dirt while prolonging floor appearance when paired with proper dust mopping procedures.**

- Treated cloths and mops may be used within 15 minutes of treatment
- Will not cause streaking or leave a film - Pleasant fragrance
- For use on carpeting, excluding stain resistant carpeting

**DM120**  
Dust Mop Treatment

Ready-To-Use

Item #	Size
12004-00	4 - 1 Gal. Bottles
12055-00	55 Gal. Drum



**Treats dust mops / cloths for dust mopping.**

- Attracts dust and dirt
- Holds dust like a magnet
- Brightens surfaces
- Economical
- Penetrates mop fibers

**TyKote®**  
Wood Floor Bonding Agent

2,500 - 3,000 sq. ft. per gallon

Item #	Size
B0691-4312	4 - 1 Gal. F-Style



**Revolutionary bonding agent used between existing floor and new topcoat.**

- Eliminates the dust, noise, and mess of traditional recoating methods
- Fast: recoat tonight, back in business tomorrow
- Simple and inexpensive process
- Works with site-finished and most prefinished wood floors

**SPORTS ZONE® FLOOR APPLICATORS**

**Heavy Weight Bar**  
18" / 24" Application Bar

Item #	Size
91185-00	1 - 18" Bar Only
91174-00	1 - 24" Bar with Handle



**For use on sport and commercial wood floors.**

- Consistent and even coverage
- Applies a thicker coat
- Applies finish smoothly and lint-free
- Streak and bubble-free application

**Applicator Refill Pads**  
Refill Pads for Heavy Weight Bar

Item #	Size
92426-00	20 - 18" Pad Refills
92427-00	20 - 24" Pad Refills



**Thousands of microfibers ensure smooth and beautiful finish.**

- Applies finish in a smooth, lint free coat
- Streak and bubble-free finish application
- Tapered ends for better maneuverability
- For use with medium or heavy weight T-bar





*With 450+ high-performing formulations, our breadth and depth of line conquer any cleaning challenge*

*From quarts to totes and ready-to-use to concentrates, Betco offers a size and format for everyone*

*Sustainable products have verified performance and compliance with health/ environmental standards*



## General Cleaning Solutions

### Professional Products, Powerful Clean

Betco products clean and deodorize entire facilities in diverse vertical markets every day. Our comprehensive line features all-purpose cleaners to quickly remove filth from a variety of surfaces, degreasers to penetrate tough oil-based soils, products to keep restrooms hygienic and spotless, and hospital-grade disinfectants to stop the spread of illness-causing germs.



**ALL PURPOSE**

**Top Flite™**  
All Purpose Cleaner Concentrate

Concentrate 1:20 - 1:64



**Suspends the toughest soils and prevents them from redepositing on the surface.**

- Versatile product, suitable for mop and bucket, spray and sponge applications
- Can be used as a top scrub cleaner in scrub and recoats
- Extremely effective in hard water
- Safe for use on most hard surfaces

Item #	Size	Item #	Size
15012-00	12 - 32 oz. Bottles	15004-00	4 - 1 Gal. Bottles
15070-00	6 - 32 oz. Bottles	15005-00	5 Gal. Pail
15048-00	6 - 32 oz. FastDose™	15055-00	55 Gal. Drum
15047-00	4 - 2 Liter FastDraw®	15027-00	275 Gal. Tote

**Spectaculoso™**  
Lavender Multi-Purpose Cleaner

Concentrate 1:64



**Cleans and deodorizes a variety of surfaces.**

- Highly effective on most water washable surfaces
- Concentrated formula saves money
- Effective even in hard water; suspends soils and prevents them from redepositing on the surface
- Rinse-free

Item #	Size
100370-00	6 - 32 oz. Bottles
102347-00	4 - 2 Liter FastDraw®
100304-00	1 - Gal. Bottle
100355-00	55 Gal. Drum

**Green Earth® Peroxide Cleaner**  
Concentrated Hydrogen Peroxide All Purpose Cleaner

Concentrate 1:10 - 1:64



**Clean with the power of peroxide.**

- Will not damage clothing like traditional bleach cleaners
- Removes mineral deposits and soap scum from a variety of bathroom surfaces
- Daily cleaner

Item #	Size
33604-00	4 - 1 Gal. Bottles
33647-00	4 - 2 Liter FastDraw®
336B2-00	2 - 2 Liter FastDraw®
33655-00	55 Gal. Drum

**Green Earth® RTU Peroxide Cleaner**  
Ready-To-Use Multi-Purpose Cleaner

Ready-To-Use



**Cleans floors, showers, glass and other hard surfaces.**

- Removes mineral deposits, hard water build up and soap scum from a variety of restroom surfaces
- Will not damage clothing like traditional bleach cleaners
- Daily cleaner

Item #	Size
32912-00	12 - 32 oz. Bottles

**Push®**  
Probiotic All Purpose Cleaner and Odor Eliminator

Ready-to-Use, 1:16-1:64



**Use on any hard surface, drain maintenance, carpet stain removal, and odor mitigation.**

- Contains enzyme producing bacteria to digest complex proteins, fats, greases, and odors
- Non-corrosive, non-flammable, non-acidic and non-caustic
- Available in three great scents - Classic Mint, Lemon and Sage, Mango

Item #	Size	Lemon and Sage	
		Classic Mint	
13312-00	12 - 32 oz. Bottles	260712-00	12 - 32 oz. Bottles
13347-00	4 - 2 Liter FastDraw®	260704-00	4 - 1 Gal. Bottles
13304-00	4 - 1 Gal. Bottles	260705-00	5 Gal. Pail
13305-00	5 Gal. Pail	260812-00	12 - 32 oz. Bottles
13377-00	15 Gal. Drum	260804-00	4 - 1 Gal. Bottles
13355-00	55 Gal. Drum	260805-00	5 Gal. Pail

**Citrufoam**  
Citrus All Purpose Cleaner

Ready-To-Use



**Clinging foam provides extended contact time when cleaning vertical and inverted surfaces.**

- Deodorizes and removes objectionable odors at the source
- Fortified with natural citrus solvents
- Lifts a variety of stubborn stains
- For use on most washable surfaces

Item #	Size
06623-00	12 - 19 oz. Aerosol Cans

**Top Flite Plus™**  
Industrial All Purpose Cleaner

Ready-To-Use



**Clinging foam and powerful formula easily removes stubborn soils.**

- Emulsifies grease, oil, and much more for easy removal
- One of the most powerful aerosol foam cleaners available
- For use on most hard surfaces

Item #	Size
05923-00	12 - 19 oz. Aerosol Cans

**ALL PURPOSE**

**Green Earth® Natural All Purpose Cleaner**  
Hard Surface Cleaner

Concentrate 1:10 - 1:64



**This versatile and dilutable cleaner quickly and effectively removes a variety of soils from any surface not harmed by water.**

- Clean virtually anything with the power of nature
- Dilutable product for light, medium or heavy duty soils
- Will not streak or smear

Item #	Size
19847-00	4 - 2 Liter FastDraw®
19804-00	4 - 1 Gal. Bottles
19855-00	55 Gal. Drum

**Green Earth® Glass Cleaner**  
Streak Free Glass and Surface Cleaner

Concentrate 1:64



**The perfect product for glass, mirrors and many hard surfaces.**

- Cleans and polishes without scratching, streaking, fogging or clouding
- Concentrated for effective and economical use

Item #	Size
53547-00	4 - 2 Liter FastDraw®
53504-00	4 - 1 Gal. Bottles

**Clear Image Concentrate**  
Non-Ammoniated Glass and Surface Cleaner

Concentrate 1:64



**Cleans and polishes glass and plastics without scratching, streaking, fogging, or clouding.**

- Powerful cleaning agents cut through grease, smudges, fingerprints, and soils
- Convenient and pleasant to use, no ammonia odor
- For use on mirrors, glass, plastic, and most hard surfaces, including tinted windows and plexiglass

Item #	Size
19947-00	4 - 2 Liter FastDraw®
19970-00	6 - 32 oz. Bottles

**Clear Image**  
Non-Ammoniated Glass and Surface Cleaner

Ready-To-Use



**Streak free formula, leaves no film.**

- Non-ammoniated, no harsh fumes
- Powerful cleaning agents remove tough soil
- Convenient ready-to-use formulation
- For use on mirrors, glass, plastic and most hard surfaces

Item #	Size
19212-00	12 - 32 oz. Bottles
19204-00	4 - 1 Gal. Bottles
19255-00	55 Gal. Drum

**Clear Image Aerosol**  
Non-Ammoniated Glass and Surface Cleaner

Ready-To-Use



**Cleans and polishes glass and plastics without scratching, streaking, fogging and clouding.**

- Convenient and pleasant to use, no ammonia odor
- Can be used on plexiglas and tinted windows
- Convenient aerosol package

Item #	Size
09223-02	12 - 19 oz. Aerosol Cans

**Deep Blue Concentrate**  
Ammoniated Glass and Surface Cleaner

Concentrate 1:64



**Fortified with ammonia for heavy duty cleaning with no streaks.**

- Cleans and brightens most hard surfaces
- Dissolves smoke, grease and smudge marks
- For use on mirrors, glass, stainless steel, porcelain, chrome and most hard surfaces

Item #	Size
18148-00	6 - 32 oz. FastDose™
18147-00	4 - 2 Liter FastDraw®

**Deep Blue**  
Ammoniated Glass and Surface Cleaner

Ready-To-Use



**Penetrates and dissolves stubborn soils while polishing hard surfaces.**

- Cleans and brightens most hard surfaces
- Fortified with ammonia for powerful cleaning
- Dissolves smoke, grease, smudge marks, and more
- For use on mirrors, glass, stainless steel, porcelain, and most hard surfaces

Item #	Size
10812-00	12 - 32 oz. Bottles
10804-00	4 - 1 Gal. Bottles
10855-00	55 Gal. Drum



**ALL PURPOSE**

**Deep Blue Aerosol**

Ammoniated Glass and Surface Cleaner

Ready-To-Use

Item #	Size
09023-00	12 - 19 oz. Aerosol Cans



**Convenient aerosol with clinging foam cuts through grease and smudges.**

- Clinging foam cuts through grease, smudges, fingerprints and soils
- Fortified with ammonia to clean and dry quickly
- Cleans and brightens most hard surfaces
- Perfect for inverted or vertical cleaning

**Deep Blue Concentrate 1:20**

Ammoniated Glass and Surface Cleaner

Concentrate 1:20

Item #	Size
28112-00	12 - 32 oz. Bottles
28104-00	4 - 1 Gal. Bottle



**Powerful glass cleaner dissolves smoke, grease, and smudge marks.**

- Fortified with ammonia for powerful cleaning
- Polishes and brightens glass and window surfaces
- Quickly penetrates dust and grime

**Stainless Steel Cleaner & Polish Aerosol**

Stainless Steel Cleaner and Brightener

Ready-To-Use

Item #	Size
06523-00	12 - 19 oz. Aerosol Cans



**Cleans, polishes, brightens and protects.**

- Convenient easy-to-use aerosol package
- Polishes easily leaving no greasy film
- Easily removes tough oil-based stains as well as water spots, spills, and food soils
- For use on aluminum, ceramic tile, chrome, porcelain and stainless steel

**Lemon Furniture Polish**

Natural Lemon Oil Furniture Polish

Ready-To-Use

Item #	Size
06023-00	12 - 19 oz. Aerosol Cans



**Natural lemon conditions, re-moisturizes, and protects fine woods without build-up.**

- Cleans and removes wax build-up
- Repairs minor scratches and cracks
- For use on woodwork, vinyl, plastic, laminate and metal

**Betco® Brite MSP**

High Gloss Multi-Surface Polish • Protectant

Ready-To-Use

Item #	Size
15512-00	12 - 32 oz. Bottles
15555-00	55 Gal. Drum



**Cleans, polishes, and protects a variety of surfaces.**

- Protects surfaces against fingerprints and smudges
- Conditions wood and leather
- Natural lemon oil provides a fresh fragrance.
- Rubs out easily to a hard shine
- For use on woodwork, vinyl, plastic, Formica® and metal

**Graffiti Remover**

Multi-Surface Graffiti Remover

Ready-To-Use

Item #	Size
01523-00	12 - 19 oz. Aerosol Cans



**Fast acting gel formula adheres to vertical surfaces for longer contact time.**

- Penetrates and removes tar, ink, paints, crayon, wax build-up and scotch tape
- Quickly penetrates and dissolves graffiti
- For use on aluminum, brick, ceramic tile, concrete, glass, marble, porcelain and steel



## INDUSTRIAL DEGREASERS

### Citruspray™ RTU Foaming Degreaser

Ready-To-Use



**Fortified with natural citrus solvents for faster removal of oily and greasy soils.**

- Quickly penetrates fats, oils, and grease-based soils
- Clinging foam provides extended cleaning power
- For use on cement, concrete, ceramic tile, grout, porcelain, plastic, resilient tile, walls, stone, stainless steel and tools

Item #	Size
13712-00	6 - 32 oz. Bottles
13755-00	55 Gal. Drum

### Speedex Ready-To-Use Cleaner • Degreaser

Ready-To-Use



**Formulated with a blend of powerful cleaning ingredients and boosters.**

- Fast acting industrial strength, removes the toughest oily, greasy and stubborn soils
- For use on cement, concrete, equipment, tile, floors, stone, stainless steel, walls, machines and tools in industrial settings

Item #	Size
17312-00	6 - 32 oz. Bottles
17304-00	4 - 1 Gal. Bottles
17355-00	55 Gal. Drum

### Speedex Concentrate Heavy Duty Degreaser

Concentrate 1:20



**Formulated with a blend of cleaning ingredients and power boosters.**

- Quickly removes ink, marker, graffiti, and crayon from a variety of surfaces
- Deodorizes as it cleans
- For use on nonporous concrete, plastic, resilient tile, and steel

Item #	Size
52847-00	4 - 2 Liter FastDraw®
52855-00	55 Gal. Drum

### Citrus Chisel Natural Non-Butyl Citrus Cleaner Degreaser

Concentrate 1:20 - 1:100



**Superior cleaner/degreaser penetrates fats, oils, and grease-based soils.**

- Performs practically any cleaning task, from factory to kitchen
- Economical dilution
- Deodorizes with pleasant citrus fragrance while it cleans
- For use on cement, concrete, equipment, floors, machinery, motors, and tools

Item #	Size
16712-00	12 - 32 oz. Bottles
16747-00	4 - 2 Liter FastDraw®
16704-00	4 - 1 Gal. Bottles
16705-00	5 Gal. Pail
16755-00	55 Gal. Drum
16727-00	275 Gal. Tote

### Factory Formula™ HP High Performance Industrial Cleaner • Degreaser Concentrate

Concentrate 1:5 - 1:100



**Removes the toughest rubber tire marks, grease, and oil from concrete floors and other surfaces.**

- Extremely low foam formula
- Leaves no residual hazy film
- Perfect for use in autoscrubbers and in mop buckets
- For use on cement, concrete, metal, steel, and stone

Item #	Size
19304-00	4 - 1 Gal. Bottles
19305-00	5 Gal. Pail
19355-00	55 Gal. Drum
19327-00	275 Gal. Tote

### Green Earth® Velocity® Non-Butyl Degreaser

Concentrate 1:5 - 1:30



**Neutral-yet-powerful cleaner quickly and effectively removes stubborn soils from a variety of surfaces.**

- Penetrates and removes inks, oils, greases, and fats
- As effective as alkaline and butyl degreasers
- Deodorizes as it cleans
- Safely removes black heel mark from rubber flooring

Item #	Size
19747-00	4 - 2 Liter FastDraw®
19704-00	4 - 1 Gal. Bottles
19755-00	55 Gal. Drum

### Green Earth® Natural Degreaser Hard Surface Degreaser

Concentrate 1:20



**Powerful, environmentally preferred degreaser removes tough soils and greases.**

- Removes inks, oils, greases, and fats from a variety of surfaces
- Manufactured from renewable resources
- Non-combustible, non-corrosive, and biodegradable
- Low foaming formula
- Safe for use on all water washable surfaces

Item #	Size
21747-00	4 - 2 Liter FastDraw®
21704-00	4 - 1 Gal. Bottles
21755-00	55 Gal. Drum

**INDUSTRIAL DEGREASERS**

**Grease Solv**  
Probiotic Degreaser

Concentrate 1:10 - 1:128



**Rivals any traditional degreaser with added probiotic package for continuous cleaning.**

- High count of non-pathogenic probiotics for better cleaning
- Probiotics target petroleum soils and other industrial organics
- Digests organic material, creating fewer issues downstream
- Suitable for industrial cleaning and degreasing, pressure washing, marine cleaning, auto bays, and more

Item #	Size
260104-00	4 - 1 Gal. Bottles
260105-00	5 Gal. Pail
260155-00	55 Gal. Drum
260127-00	275 Gal. Tote

**CTW501**  
Car and Truck Wash

Concentrate 1:128



**For use in automated car washes, brush and manual washing applications.**

- Quickly breaks down and suspends dirt, dust, grime, insects and road film to be rinsed freely
- Will not dull, waterspot, or streak painted surfaces, windows or chrome
- High sudsing properties help to lubricate brushes to aid in their efficient use

Item #	Size
50104-00	4 - 1 Gal. Bottle
50105-00	5 Gal. Pail
50155-00	55 Gal. Drum
50127-00	275 Gal. Tote

**Never B4**  
Vehicle Pressure Washer Cleaner

Concentrate 1:25 - 1:100



**Quickly removes dirt, oil, grease, road film and exhaust from aluminum and painted surfaces.**

- Sheeting action does not leave a film or residue
- Concentrated proprietary blend of cleaning detergents quickly attacks soil
- For use on trucks, tank trucks and buses

Item #	Size
50205-00	5 Gal. Pail
50255-00	55 Gal. Drum
50227-00	275 Gal. Tote

**AC114**  
Multi-Purpose Acid Cleaner • Delimer

Concentrate 1:20



**Powerful descaler and acid etcher, dissolves and emulsifies tough soils.**

- Concentrated, fast, and effective
- For use on acid resistant metal, concrete and cement
- Pleasant odor
- Restores and rejuvenates many surfaces

Item #	Size
11404-00	4 - 1 Gal. Bottles
11455-00	55 Gal. Drum
11427-00	275 Gal. Tote

**Ultra 2000™**  
Super Double Strength Degreaser

Concentrate 1:10 - 1:100



**Powerful degreasing action instantly penetrates oily, greasy soils.**

- Concentrated butyl based cleaner for heavy duty cleaning
- Instantly penetrates and emulsifies fats, oils and grease based soils
- Low foaming, ideal for automatic scrubbers, pressure washers, and dip tanks

Item #	Size
13604-00	4 - 1 Gal. Bottles
13605-00	5 Gal. Pail
13655-00	55 Gal. Drum
13627-00	275 Gal. Tote

**Super Kemite®**  
Heavy Duty Cleaner • Degreaser

Concentrate 1:10 - 1:32



**Versatile, may be used in a variety of cleaning applications with different dilutions.**

- Heavy duty cleaning made easy with this advanced grease cutting formula
- Fast penetration and breakdown of greases and oils
- Low foaming formula, ideal for use in automatic scrubbers and pressure washers

Item #	Size
10304-00	4 - 1 Gal. Bottles
10305-00	5 Gal. Pail
10355-00	55 Gal. Drum
10327-00	275 Gal. Tote

**Liquid Chisel® Max**  
Ultra Strength Non-Butyl Degreaser

Concentrate 1:10 - 1:100



**Advanced and versatile formula quickly emulsifies both animal fats and petroleum greases.**

- Varying dilution rates for light and heavy duty applications
- Performs well in hard water
- Non-butyl, no harmful vapors or toxic solvents
- Ideal for automatic scrubber use

Item #	Size
14504-00	4 - 1 Gal. Bottles
14505-00	5 Gal. Pail
14555-00	55 Gal. Drum
14527-00	275 Gal. Tote

## INDUSTRIAL CHEMICAL MANAGEMENT

### High Flow Proportioner

Industrial Proportioner for Auto Scrubbers



**For quick filling of automatic scrubbers.**

- Conveniently mounts above drum or tote
- Lever control for hands-free filling
- Small and compact unit mounts anywhere
- 8 gallon per minute flow rate

Item #	Size
90423-00	1 - Dispenser

### Tote / Tank Drum Proportioner

Industrial Proportioner for Drums and Totes



**The easiest way to dilute directly from drums.**

- No complicated wall mount or assembly needed
- 4 gallon per minute flow rate
- Conveniently mounts directly on drum or tote

Item #	Size
90102-00	1 - Dispenser

## INDUSTRIAL SOLVENT DEGREASERS

### Citrusolv™ Concentrate

Natural Degreaser • Deodorizer

Ready-to-Use, Concentrate 1:32



**Natural citrus solvents remove the toughest soils.**

- Perfect for dip cleaning and removing heavy build-up of industrial soil
- Deodorizes as it cleans with citrus fragrance
- Meets VOC requirements in most states

Item #	Size
20918-00	12 - 16 oz. Bottles
20904-00	4 - 1 Gal. Bottles
20905-00	5 Gal. Pail
20955-00	55 Gal. Drum

### Citrusolv™ 40

Multi-Purpose • Heavy-Duty Solvent • Degreaser

Concentrate 1:5 - 1:43



**High quality natural citrus terpenes remove heavy grease deposits and tough soils.**

- Nonacidic, noncaustic and non corrosive
- Cleans greasy floors, walls and equipment
- Removes adhesives, decals and chewing gum
- Controls odors in problem areas

Item #	Size
21104-00	4 - 1 Gal. Bottles
21155-00	55 Gal. Drum

### Citrusolv™ HF

High Flash Solvent • Degreaser

Ready-To-Use



**Evaporates quickly with no residue.**

- 145° F flash point reduces flammability concerns.
- Rapidly removes grease, oil, and other contaminants
- Deodorizes as it cleans
- Non-acidic, non-caustic and non-corrosive.

Item #	Size
21405-00	5 Gal. Pail
21455-00	55 Gal. Drum

### Citrusolv™ WR

Water Rinsable Solvent • Degreaser

Ready-To-Use



**Natural citrus solvents quickly penetrate grease, oils, adhesives, undercoating, and rubber tire marks.**

- Perfect for dip cleaning and removing heavy build-up of industrial soil
- Deodorizes as it cleans with citrus fragrance
- Meets VOC requirements in most states

Item #	Size
21255-00	55 Gal. Drum

**RESTROOM - ACID CLEANERS**

**Kling™**

Thickened Acid Toilet Bowl and Urinal Cleaner

Ready-To-Use

Item #	Size
07512-00	12 - 32 oz. Bottles
07555-00	55 Gal. Drum



**Thickened formula for better cleaning.**

- 9% hydrochloric acid for tough soils
- Pleasant mint fragrance
- For use on toilets, urinals, ceramic tile floors, porcelain sinks and urinals

**Bol Maid®**

Porcelain Toilet Bowl Cleaner

Ready-To-Use

Item #	Size
07212-00	12 - 32 oz. Bottles



**Quickly removes rust, scale, stains, hard water mineral deposits and urine salts.**

- 9% hydrochloric acid for tough soils
- Pleasant mint fragrance
- Inhibited to protect plumbing and fixtures
- For use on toilets and urinals

**Pull®**

Heavy Duty Toilet Bowl • Urinal Cleaner

Ready-To-Use

Item #	Size
07112-00	12 - 32 oz. Bottles
07155-00	55 Gal. Drum



**Formulated for restorative cleaning to work quickly.**

- 23% hydrochloric acid to remove rust, scale and mineral deposits
- For use on inside of toilet bowls and urinals only
- Ideal for hard water applications

**Stix™**

Toilet Bowl, Porcelain and Shower Tile Cleaner

Ready-To-Use

Item #	Size
07612-00	12 - 32 oz. Bottles



**Quickly removes a variety of soils from restroom surfaces.**

- Removes rust, mineral deposits and lime as well as soap scum, body oils and grease
- Mild acid won't damage common restroom surfaces
- Pleasant cherry almond fragrance
- For use on toilets, urinals, porcelain sinks and shower stalls

**Sure Bet™ II**

One-Step Acid Cleaner, Disinfectant, Virucide, Mildewstat, and Deodorizer

Concentrate 1:32

Item #	Size
31412-00	12 - 32 oz. Bottles
31447-00	4 - 2 Liter FastDraw®
31404-00	4 - 1 Gal. Bottles
31405-00	5 Gal. Pail
31455-00	55 Gal. Drum
31447-07	4 - 2 Liter FastDraw® (CA)
31404-07	4 - 1 Gal. Bottles (CA)
31455-07	55 Gal. Drum (CA)



**Foaming action extends contact time for better cleaning and more effective disinfecting.**

- Quickly removes soap scum, hard water deposits and other shower residues
- Defends against harmful germs while deodorizing
- For use on showers, bath tubs, porcelain fixtures and ceramic tile floors

**RESTROOM - ACID FREE CLEANERS**

**Green Earth® RTU Restroom Cleaner**

Non-Corrosive • Heavy Duty Restroom Cleaner

Ready-To-Use

Item #	Size
30912-00	12 - 32 oz. Bottles



**Removes difficult, hard water stains and soap scum in all areas of the restroom.**

- Contains organic acids, powerful cleaning agents that inhibit scaling and soil buildup
- Non-corrosive acid removes the toughest soap scum deposits
- Pleasant fresh mint fragrance
- For use on sinks, counters fixtures, tubs, floors, walls, glazed tile, and porcelain





## RESTROOM - ACID FREE CLEANERS

### Green Earth® Restroom Cleaner

Concentrated • Non Corrosive • Heavy Duty Restroom Cleaner

Concentrate 1:20 - 1:64



**Safely removes soap scum and hard water from restroom surfaces.**

- Foaming action allows for longer contact time and maximum penetration of tough soils
- Pleasant, powerful fragrance
- For use in showers, bathtubs, and other restroom surfaces

Item #	Size
54847-00	4 - 2 Liter FastDraw®
54804-00	4 - 1 Gal. Bottles
54855-00	55 Gal. Drum

### AF79

Acid Free Restroom Cleaner and Disinfectant

Ready-To-Use



**Germicidal detergent disinfects, cleans, and deodorizes in one easy step.**

- Clean and disinfects hard nonporous bathroom surfaces
- Pleasant citrus bouquet fragrance
- Quickly removes soap scum
- Non-scratch cleaning of showers, tubs, shower doors, fixtures, and toilet bowls

Item #	Size
07912-00	12 - 32 oz. Bottles
07904-00	4 - 1 Gal. Bottles
07955-00	55 Gal. Drum

### Rest Stop™

Value Priced Restroom Disinfectant

Ready-To-Use



**Latest odor control technology delivers powerful fragrance cleaning ingredients and power boosters.**

- Delivers non-acid disinfectant and cleaning performance, with a pleasant citrus bouquet fragrance
- Acid free, will not damage surfaces
- For use on toilets, urinals, sinks, counters, floors, showers, glazed ceramic tiles, and walls

Item #	Size
07012-00	12 - 32 oz. Bottles
07004-00	4 - 1 Gal. Bottles
07005-00	5 Gal. Pail
07055-00	55 Gal. Drum

### AF79 Concentrate

Concentrated Acid-Free Bathroom Disinfectant

Concentrate 1:64 - 1:128



**Offers excellent cleaning performance with outstanding value and economy.**

- Effective against SARS-CoV-2 (COVID-19), VRE, MRSA, Staphylococcus aureus, Salmonella enterica, Pseudomonas aeruginosa, and HIV-1 (AIDS)
- Pleasant ocean breeze fragrance
- For use on counters, floors, ceramic tile, concrete, sinks, tables, toilets, trash cans, urinals and walls

Item #	Size
33104-00	4 - 1 Gal. Bottles
33147-00	4 - 2 Liter FastDraw®
331B2-00	2 - 2 Liter FastDraw®
33147-07	4 - 2 Liter FastDraw® (CA)
33104-07	4 - 1 Gal. Bottles (CA)

### Forest 5

Foaming • Cleaner • Deodorant

Ready-To-Use



**Powerful clinging foam action allows for maximum contact time.**

- Pleasant mint fragrance
- Versatile all-purpose cleaner
- Excellent for soap scum removal in shower areas
- For use on bathtubs, counters, floors, walls, hampers, showers, sinks and trash cans

Item #	Size
30712-00	12 - 32 oz. Bottles
30755-00	55 Gal. Drum

### Best Bet™

Liquid Creme Cleanser

Ready-To-Use



**Contains jeweler's grade abrasive to clean thoroughly without scratching surface.**

- Thick clinging formula is ideal for vertical surfaces
- Penetrates, scours, brightens, and polishes without heavy agitation
- Fresh mint fragrance
- For use on bathtubs, chrome, metal, porcelain, sinks, stainless steel, tile, toilets, urinals, and walls

Item #	Size
07712-00	12 - 32 oz. Bottles
07755-00	55 Gal. Drum

### BTB

Instant Mildew Stain Remover • Bathroom Cleaner

Ready-To-Use



**Instantly whitens counters, fiberglass, grout, showers, sinks, tiles, tubs and vinyl.**

- Instantly removes tough mildew stains
- Increases the level of cleanliness in the shower rooms, locker rooms, and other restroom area
- Pleasant fragrance

Item #	Size
32112-00	12 - 32 oz. Bottles

**RESTROOM - OTHER**

**Anti-Splash Urinal Screen**

Fragranced • Enzyme Powered • Anti-Splash Urinal Screens

Ready-To-Use



**Reduce the spread of germs by avoiding splash back.**

- Patented technology allows for effective fragrance release
- Enzyme-powered technology prevents malodors
- 100% recyclable, VOC compliant
- Flexible, designed to fit any urinal and prevent debris

Item #	Size
987D7-00	60 - Screens (Ocean Breeze)
988D7-00	60 - Screens (Citrus)
989D7-00	60 - Screens (Lavender)

**SmartScreen®**

Urinal Screen with Built in Probiotic Puck

Ready-To-Use



**Urinal screens with built-in pucks featuring probiotic technology and long-lasting scent.**

- Eliminates malodors and reduces drain line build-up
- Biodegradable agents and non-pathogenic bacteria produce enzymes designed to target and break down uric and water scale
- Puck components chemically bond to malodors, rendering them odorless and non-toxic

Item #	Size
28672-00	72 - Screens (Ocean Breeze)
28772-00	72 - Screens (Citrus)

**Urinal Puck Blue DSL**

Probiotic Urinal Puck

Ready-To-Use



**Contains probiotics capable of degrading uric acid and degrading odors naturally.**

- Preventative maintenance tool - controls scale build-up
- Works in all types of urinals or troughs
- Cleans and freshens
- Prevents blockages in traps and pipes

Item #	Size
Z603RP1-00	50 - 50 Gram Pucks

**Wild Berry Malodor Counteractant**

Powdered Portable Toilet Malodor Counteractant

Ready-To-Use



**Concentrated, non-formaldehyde powder combining probiotic waste digesters with powerful odor control and fragrance.**

- Convenient pre-measured, quick-dissolve water-soluble pouches
- Eliminates odors instead of covering them up
- For use in portable toilets and RV, bus, boat, and camper black water tanks

Item #	Size
Z700P15-00	800 - 1 oz. Pouches

**Barrier Fluid**

Oil-Based Malodor Blocking Liquid

Ready-To-Use



**Malodor prevention fluid for use in urinals or floor drains.**

- Reduces odor and enhances the restroom experience
- Pleasant, long-lasting fragrance
- For use in water free urinals and floor drains

Item #	Size
29170-00	6 - 32 oz. Bottles

## CONCENTRATED DISINFECTANTS

### AF315

Disinfectant • Deodorant • Cleaner

Concentrate 1:26



**Provides long lasting freshness against tough odors.**

- Disinfectant kills pseudomonas, salmonella, and staph
- Cleans, disinfects, and deodorizes in one step
- Kills HIV-1 (AIDS) on precleaned environmental surfaces/objects
- Neutral pH will not attack floor finish

Item #	Size
31512-00	12 - 32 oz. Bottles
31547-00	4 - 2 Liter FastDraw®
31504-00	4 - 1 Gal. Bottles
31505-00	5 Gal. Pail
31555-00	55 Gal. Drum

### pH7Q Dual

Neutral pH Disinfectant • Detergent • Deodorant

Concentrate 1:256



**Neutral pH cleaner, disinfectant and deodorizer.**

- Disinfects, cleans, and deodorizes in one labor-saving step
- Kills SARS-CoV-2 (COVID-19), HIV-1 (AIDS virus), Influenza A, Hepatitis B, VRE and MRSA on pre-cleaned environmental surfaces
- For use on floors, chairs, bathroom fixtures, desks, counters and stainless steel

Item #	Size
35547-00	4 - 2 Liter FastDraw®
35504-00	4 - 1 Gal. Bottles
35555-00	55 Gal. Drum

### Daily Disinfectant Dual

Neutral pH Disinfectant • Detergent • Deodorant

Concentrate 1:256



**Economical ultra concentrate provides low end-use cost.**

- Disinfects, cleans, and deodorizes in one labor saving step
- Kills SARS-CoV-2 (COVID-19), HIV-1 (AIDS virus), Influenza A, Listeria, VRE and MRSA on pre-cleaned environmental surfaces
- Economical ultra concentrate provides low end-use cost
- Perfect for damp mopping highly polished floors
- For use on floors, walls, toilets, sinks, glazed porcelain and plastic

Item #	Size
35504-07	4 - 1 Gal. Bottles (CA)
35547-07	4 - 2 Liter FastDraw® (CA)

### pH7Q

Neutral pH Disinfectant • Detergent • Deodorant

Concentrate 1:64



**Neutral pH cleaner disinfectant and deodorizer.**

- Disinfects, cleans, and deodorizes in one labor saving step
- Kills SARS-CoV-2 (COVID-19), HIV-1 (AIDS virus), Influenza A, Hepatitis B, VRE and MRSA on pre-cleaned environmental surfaces
- For use on floors, walls, toilets, sinks, glazed porcelain and plastic

Item #	Size
31604-00	4 - 1 Gal. Bottles
31647-00	4 - 2 Liter FastDraw®
31605-00	5 Gal. Pail
31655-00	55 Gal. Drum

### Quat-Stat™ 5

One-Step Disinfectant • Cleaner

Concentrate 1:256



**A heavy duty disinfectant that cleans disinfects and deodorize.**

- Can be used through an auto scrubber without dulling gloss
- Effective against a broad spectrum of bacteria, is virucidal including SARS-CoV-2 (COVID-19), HIV-1 (AIDS virus), Hepatitis B and C and is fungicidal
- Approved for use in electrostatic sprayers

Item #	Size
34148-00	6 - 32 oz. Dosing Bottle
34147-00	4 - 2 Liter FastDraw®
34104-00	4 - 1 Gal. Bottles
34155-00	55 Gal. Drum

### Triforce

One-Step Disinfectant • Bactericidal • Fungicidal • Virucidal\*

Concentrate 1:256



**3 minute broad spectrum hard surface disinfectant and soft surface sanitizer.**

- Efficacy against SARS-CoV-2 (COVID-19) Staphylococcus, Klebsiella Pneumoniae, HIV, Hepatitis B & C, Influenza
- Approved for use in electrostatic sprayers
- Added benefit of soft surface sanitization
- Formulated to reduce cross-contamination on treated surfaces

Item #	Size
33347-00	4 - 2 Liter FastDraw®
33304-00	4 - 1 Gal. Bottles

### VersiFect™

Disinfectant, Virucide, Cleaner and Deodorizer

Concentrate 1:64



**Effective against SARS-Related Coronavirus (SARS-CoV-2) in 1 minute.**

- Economical concentrate that can be used with a mop and bucket, trigger sprayers or sponge
- Kills Pseudomonas aeruginosa, Staphylococcus aureus (MRSA), CA-MRSA, HBV
- Hospital disinfectant and kills HIV-1 (AIDS virus) and Influenza A
- This product saves, time, labor and cost.

Item #	Size
382047-00	4 - 2 Liter FastDraw®
382004-00	4 - 1 Gal. Bottles
382005-00	5 Gal. Pail
382055-00	55 Gal. Drum

**CONCENTRATED DISINFECTANTS**

**Pine Quat**

Pine Cleaner Disinfectant • Deodorant

Concentrate 1:32



**One-step cleaner serves as fungicide in the presence of organic soils.**

- Neutral pH, no harsh alkali, will not attack floor finish
- Simple to use with pleasant pine fragrance
- Deodorizes surfaces restrooms, locker rooms and exercise facilities
- For use on floors, countertops, desks, walls, shower stalls, tubs, toilets, sinks, laminate, stainless steel, glazed porcelain and plastic

Item #	Size
30470-00	6 - 32 oz. Bottles
30404-00	4 - 1 Gal. Bottles
30405-00	5 Gal. Pail
30455-00	55 Gal. Drum

**READY-TO-USE DISINFECTANTS**

**Fight-Bac™ RTU**

Broad Spectrum Disinfectant • Cleaner

Ready-To-Use



**Use on hard non-porous surfaces in hospitals, nursing homes, schools, office buildings and lodging establishments.**

- Kills 99.9% of bacteria when used according to disinfection directions
- Cuts tough grease and grime and will not scratch or bleach surfaces
- Kills SARS-CoV-2 virus on hard non-porous surfaces

Item #	Size
31112-00	12 - 32 oz. Bottles
31104-00	4 - 1 Gal. Bottles
31155-00	55 Gal. Drum
31112-07	12 - 32 oz. Bottles (CA)
31104-07	4 - 1 Gal. Bottles (CA)
31155-07	55 Gal. Drum (CA)

**GE Fight-Bac™ RTU**

Disinfectant • Cleaner • Virucide • Fungicide

Ready-To-Use



**One step, no rinse cleaner and disinfectant formulated with a botanical citric acid.**

- Demonstrates efficacy against pathogens like SARS-CoV-2 (COVID-19)
- Can be used as a food contact sanitizer with no rinsing or wiping required
- Suitable for use on hard and/or soft surfaces
- For use on desks, countertops, kitchen surfaces, restrooms, stainless steel

Item #	Size
39012-00	12 - 32 oz. Bottles
39004-00	4 - 1 Gal. Bottles
39005-00	5 Gal. Pail
39055-00	55 Gal. Drum
39027-00	275 Gal. Tote

**GE Fight-Bac™ Wipes**

Disinfectant • Cleaner • Virucide • Fungicide

Ready-To-Use



**Free from harsh chemicals and formulated with citric acid, a botanical active ingredient.**

- Demonstrates efficacy against pathogens like SARS-CoV-2 (COVID-19)
- Hospital grade efficacy
- Environmentally friendly, no harsh fumes for the user
- Requires no PPE

Item #	Size
392F1-00	500 - 5.5" x 7" Sheet
392F5-00	1500 - 11" x 7" Sheet
392F1-07	500 - 5.5" x 7" Sheet (CA)
392F5-07	1500 - 11" x 7" Sheet (CA)

**Glybet™ III**

Disinfectant • Deodorant Tuberculocidal • Virucide • Fungicide

Ready-To-Use



**Disinfectant for use in restrooms and on hard surfaces.**

- Serves as a fungicide against pathogenic fungi, mold, and mildew
- Kills odor-causing bacteria at the source
- Kills Influenza A and B virus, VRE, MRSA, salmonella, and pseudomonas
- Tuberculocidal hospital-grade disinfectant

Item #	Size
108623-00	12 - 15.5 oz. Aerosol Cans

**Cide-Bet II**

Hospital Disinfectant Foaming Germicidal Cleaner • Citrus Bouquet

Ready-To-Use



**Hospital-grade disinfectant cleans without scouring or scratching.**

- Dispenses a clinging foam for vertical surfaces
- Virucidal against AIDS virus and Herpes Simplex 1 & 2
- Deodorizes with pleasant scent, eliminating all malodors at the source

Item #	Size
08723-00	12 - 19 oz. Aerosol Cans



**Bloodborne Pathogen Standard Compliance**

The United States Department of Labor, Occupational Health and Safety Administration (OSHA) recognizes EPA registered disinfectants which are tuberculocidal or are EPA registered as efficacious against both the Hepatitis B virus and the HIV-1 (AIDS Virus) as meeting the requirements of the OSHA Bloodborne Pathogen Standard for decontamination of work surfaces.

**AIR CARE**

**Best Scent™ Ocean Breeze**  
Air Freshener

Ready-To-Use / Concentrate 1:10 - 1:256



**Immediately defeats lingering odors, freshening the treated area with a pleasant aroma.**

- Use on airborne odors, floors, carpets, trash containers
- Fresh ocean breeze scent
- Versatile, use in any deodorizing application
- Available in ready-to use or concentrated

Item #	Size
23147-00	4 - 2 Liter FastDraw®
23104-00	4 - 1 Gal. Bottles
23155-00	55 Gal. Drum
23512-00	12 - 32 oz. Bottles (RTU)
02423-00	12 - 16 oz. Aerosol Cans (RTU)

**Best Scent™ Lemon Zest**  
Air Freshener

Ready-To-Use / Concentrate 1:10 - 1:256



**Immediately defeats lingering odors, freshening the treated area with a pleasant aroma.**

- Use on airborne odors, floors, carpets, trash containers
- Fresh lemon zest scent
- Versatile, use in any deodorizing application
- Available in ready-to-use or concentrate

Item #	Size
22647-00	4 - 2 Liter FastDraw®
22604-00	4 - 1 Gal. Bottles
22655-00	55 Gal. Drum
23312-00	12 - 32 oz. Bottles (RTU)

**Best Scent™ Smoke & Odor**  
Odor Neutralizer

Ready-To-Use



**Contains odor counteractant technology to eliminate smoke and burnt malodors, not just cover them up.**

- For use on airborne odors, floors, carpets and trash containers
- Versatile, use in any deodorizing application.
- Spring renewal scent

Item #	Size
23404-00	4 - 1 Gal. Bottles
23455-00	55 Gal. Drum
23412-00	12 - 32 oz. Bottles
06223-00	12 - 16 oz. Aerosol Cans

**SenTec® Mountain Meadow**  
Odor Eliminator Technology

Ready-To-Use / Concentrate 1:10 - 1:256



**Scientifically formulated to completely eliminate odors instead of covering them up.**

- Unique malodor counteractant technology eliminates odors
- SenTec® traps and removes odors from the air

Item #	Size
4125B2-00	2 - 2 Liter FastDraw®
412504-00	4 - 1 Gal. Bottles
402570-00	6 - 32 oz. Bottles (RTU)

**SenTec® Pure Linen**  
Odor Eliminator Technology

Ready-To-Use / Concentrate 1:10 - 1:256



**Scientifically formulated to completely eliminate odors instead of covering them up.**

- Unique malodor counteractant technology eliminates odors
- SenTec® traps and removes odors from the air

Item #	Size
4130B2-00	2 - 2 Liter FastDraw®
413004-00	4 - 1 Gal. Bottles
403070-00	6 - 32 oz. Bottles (RTU)

**Odor Control Metered Aerosol Dispenser**  
Continuous Deodorizing Dispenser for Restrooms



**Metered aerosol dispenser system that provides excellent malodor elimination.**

- Installs in 2 minutes, requires 2 c-cell batteries
- Improves restroom experience by eliminating malodors
- Fragrance options include Best Scent™ Ocean Breeze, SenTec® Pure Linen, and SenTec® Mountain Meadow

Item #	Size
91753-00	6 - Metered Dispensers

**Best Scent™ / ScenTec® Metered Aerosols**  
Air Freshener for use with Odor Control Metered Aerosol Dispenser

Ready-To-Use



**Metered aerosol that provide excellent malodor elimination.**

- For use with Metered Dispenser System
- Low VOC formulation

Item #	Size
02583-00	6 - 7 oz. Aerosol Cans (Ocean Breeze)
442583-00	6 - 7 oz. Aerosol Cans (Mountain Meadow)
443083-00	6 - 7 oz. Aerosol Cans (Pure Linen)





## ***SYMPPLICITY™***

*Premium products and programs are uniquely designed to deliver one-wash clean performance*

*No-contact SureConnect dispensing offers performance, safety, environmental, and cost-saving benefits*

*Experts provide support materials and continuous training to keep operations running smoothly*



# **Food Service & Warewash Solutions**

## **Clean, Safe, and Simple Innovation**

A full streamlined offering of cleaning products and dispensing equipment covers all front- and back-of-house needs while reducing inventory costs and simplifying the reordering process. Many products have low environmental impact and feature SureConnect—an easy-to-use, color-coded, closed loop dispensing system that eliminates waste and employee guesswork.



**MANUAL POT & PAN DETERGENT**

**Symplicity™ In-Sync**

Ultra Concentrated Manual Pot & Pan Detergent

Concentrate - 1 - 2 oz. per 10 gallons



**Ultra-concentrated hand dishwashing detergent.**

- Formulated to take on the leading blue brand
- Ideal for cleaning heavily encrusted pots and pans and has the power to cut through the toughest grease
- Specifically designed for supermarket, institutional and restaurant use where fast grease emulsification and lasting suds are a must
- Great for dispensing

Item #	Size
185147-00	4 - 2 Liter FastDraw®
185104-00	4 - 1 Gal. Bottles
185105-00	5 Gal. Pail
185125-00	2.5 - Gal. BIB
1851B9-00	8 - 38 oz. Bottles
185155-00	55 Gal. Drum

**Symplicity™ Citrusuds™**

Lemon Scented Pot & Pan Detergent

Concentrate - .4 oz. per gallon



**Lemon scented manual dishwashing detergent.**

- Ideal for cleaning pots, pans, and dishes
- Works quickly and leaves surfaces spot and film-free
- Effective on grease and fat but mild on the hands

Item #	Size
210947-00	4 - 2 Liter FastDraw®
210904-00	4 - 1 Gal. Bottles
210905-00	5 Gal. Pail

**Symplicity™ Envy**

Premium Pot & Pan Detergent

Concentrate - 1 - 2 oz. per 10 gallons



**A rich ultra-concentrated dish detergent.**

- Formulated to take on the leading green brand
- Provides a powerful, grease fighting clean while remaining gentle on hands
- Delivers a mountain of suds with every drop for an ultimate clean and shine

Item #	Size
211905-00	5 Gal. Pail

**Symplicity™ Tilly®**

Hand Dishwashing Detergent

Concentrate - 1 oz. per gallon



**Lotionized, pH neutral pink hand dishwashing detergent.**

- Gentle on the hands in industrial, institutional, and restaurant applications
- Quickly cuts through baked-on food and grease deposits
- Provides long lasting, stable suds
- Pleasant fragrance

Item #	Size
11004-00	4 - 1 Gal. Bottles
11005-00	5 Gal. Pail

**Symplicity™ Fresh Suds**

Hand Dishwashing Detergent

Concentrate - 1 oz. per 3 gallons



**Economical hand dishwashing detergent.**

- Economical dishwashing detergent specially designed for industrial, institutional and restaurant use
- Rinses freely - This product provides stable suds yet never streaks

Item #	Size
210204-00	4 - 1 Gal. Bottles
210205-00	5 Gal. Pail

**Symplicity™ Green Earth® Pot & Pan Detergent**

Premium 100% Active Solid Pot & Pan Detergent

Concentrate



**Non-phosphate manual detergent rapidly penetrates and suspends difficult food soils.**

- Low environmental impact, low VOCs, no phosphorus, APEs, or NPEs
- Compact and convenient size with molded jar handle for quick change out
- Rich, long-lasting suds

Item #	Size
25671-00	2 - 5 Pint Jars

**SANITIZERS**

**Symlicity™ Sanibet™ Multi-Range**  
Sanitizer • Disinfectant • Cleaner

Concentrate 1:512



**To sanitize mobile and immobile items such as drinking glasses and eating utensils, tanks, chopping blocks and countertops.**

- Kills Listeria, E-Coli, Salmonella
- No rinse required when used as directed as a sanitizer
- Concentrated for economical use
- Effective in hard water

Item #	Size	Item #	Size
23704-00	4 - 1 Gal. Bottles	23704-07	4 - 1 Gal. Bottles (CA)
23725-00	2.5 Gal. Bag in Box	23725-07	2.5 Gal. Bag in Box (CA)
23705-00	5 Gal. Pail	23705-07	5 Gal. Pail (CA)
23747-00	4 - 2 Liter FastDraw®	23747-07	4 - 2 Liter FastDraw® (CA)
23755-00	55 Gal. Drum		

**Sanibet™ RTU**  
Cleaner • Sanitizer • Deodorizer

Ready-To-Use



**This product is an effective sanitizer/cleaner for use on food contact surfaces.**

- Use in restaurants, bars, kitchens, and meat and poultry plants
- No need to rinse, air dry
- Convenient ready-to-use spray bottle

Item #	Size
34212-00	12 - 32 oz. Bottles

**CLEANERS / DEGREASERS**

**Citrus Chisel**  
Natural Citrus Cleaner • Degreaser

Concentrate 1:20 - 1:100



**Performs practically any cleaning tasks from factory to kitchen.**

- May be diluted up to 1:100 for great economy
- Superior performance with natural citrus solvents
- For use on cement, concrete, equipment, floors, machinery, motors and tools
- Deodorizes as it cleans with a pleasant citrus fragrance

Item #	Size
16712-00	12 - 32 oz. Bottles
16747-00	4 - 2 Liter FastDraw®
16704-00	4 - 1 Gal. Bottles
16705-00	5 Gal. Pail
16755-00	55 Gal. Drum
16727-00	275 Gal. Tote

**Oven Jell**  
Oven • Grill and Range Hood Cleaner

Ready-To-Use



**Gel formula clings to surfaces, quickly penetrating and removing baked and burnt-on deposits.**

- Breaks chemical bond between soil and oven, releasing deposits
- Non-fuming, non-flammable
- For use on deep fat fryers, electric burners, frying pans, ovens, range hoods, and stove burners

Item #	Size
13912-00	12 - 32 oz. Bottles
13904-00	4 - 1 Gal. Bottles
13955-00	55 Gal. Drum

**Oven and Grill Cleaner**  
Aerosol Oven and Grill Cleaner

Ready-To-Use



**Versatile, can be used in hot or cold ovens.**

- Gel formulation clings and cleans
- Self-scouring, penetrates grease/carbon instantly
- Lemon scent, pleasant and convenient to use
- For use on griddles, ovens and grills, rotisseries and stove burners

Item #	Size
05523-00	12 - 19 oz. Aerosol Cans

**No-Rinse Floor Cleaner**  
Probiotic No-Rinse Multi-Surface Floor Cleaner

Concentrate 1:64



**Proprietary blend of surfactants and non-pathogenic probiotics for immediate and extended cleaning.**

- Ideal for food service environments, targets starches and fats
- Continues cleaning even after floor is dry
- Economical concentration for low end use cost
- No rinse formula saves time and labor

Item #	Size
25847-00	4 - 2 Liter FastDraw®
25804-00	4 - 1 Gal. Bottles
25805-00	5 Gal. Pail
25877-00	15 Gal. Drum
25827-00	275 Gal. Tote





## CLEANERS / DEGREASERS

### Spray Foam

Heavy Duty Foaming Degreaser

Concentrate 1:20



**Clinging formula allows easy cleaning of vertical surfaces.**

- Quickly emulsifies and removes animal fats, grease and vegetable oils
- Leaves hard surfaces such as floors, walls, and equipment odorless and film-free
- For use in supermarkets, food processing plants and other food service environments

Item #	Size
12604-00	4 - 1 Gal. Bottles
12605-00	5 Gal. Pail
12655-00	55 Gal. Drum
12627-00	275 Gal. Tote

### Spray Foam Ultra

Heavy Duty Foaming Degreaser

Concentrate 1:256



**Non-caustic, non-corrosive, clinging foam allows easy cleaning of vertical surfaces.**

- Concentrated yet effective formula for maximum efficiency
- Free rinsing, no residue and very low foam
- Quickly emulsifies/removes animal fat, grease, vegetable oil, blood and fatty soils
- For use in supermarkets, food processing plants and other food service environments

Item #	Size
18647-00	4 - 2 Liter FastDraw®
18604-00	4 - 1 Gal. Bottles

### MAD

Mild Acid Detergent

Concentrate 1:15 - 1:64



**For use on chrome, floors, showers, sinks, stainless steel, tubs, tile, grout and walls.**

- Concentrated for effective end-use dilutions
- Removes rust, lime and scale from hard non-porous surfaces
- Removes salt residues and neutralizes floors after intense strip jobs

Item #	Size
13504-00	4 - 1 Gal. Bottles
13555-00	55 Gal. Drum

### HD High Foam Chlorinated Degreaser

High Foaming Chlorinated Degreaser

Concentrate 1:20



**Thick, rich, clinging foam, ideal for CIP (clean in place) applications.**

- High caustic formula removes the toughest fats, oils, grease and blood stains
- Sodium hypochlorite whitens discolored areas
- Non-butyl, no perfume or dyes
- For use on food processing floors, walls and equipment

Item #	Size
54004-00	4 - 1 Gal. Bottles
54005-00	5 Gal. Pail
54055-00	55 Gal. Drum
54027-00	275 Gal. Tote

### HD Low Foam CIP Chlorinated Degreaser

Low Foaming Chlorinated Degreaser for CIP (Clean in Place) Cleaning

Concentrate 1:20



**Very low foam, ideal for CIP applications.**

- High caustic formula removes the toughest fats, oils, grease and blood stains
- Sodium hypochlorite whitens discolored areas.
- Non-butyl, no perfume or dyes
- For use on food processing floors, walls and equipment

Item #	Size
53004-00	4 - 1 Gal. Bottles
53055-00	55 Gal. Drum

### Citrus Kitchen Degreaser

Citrus Cleaner • Degreaser

Concentrate 1:6 - 1:32



**Superior cleaning performance with natural citrus solvents.**

- Citrus solvents and surfactants emulsify fats, oils, and greases from kitchen floors and surfaces
- Great deodorizer
- Highly economical concentration for versatility and low end use cost
- Performs well in hot, cold, hard, or soft water

Item #	Size
113104-00	4 - 1 Gal. Bottles

### Kitchen Degreaser

Cleaner and Degreaser

Concentrate 1:6 - 1:32



**A heavy duty degreaser specifically formulated to instantly dissolve greasy, oily soils found in commercial kitchens.**

- Works well in hot, cold, hard or soft waters
- Ultra-concentrated product offers true economy and unbeatable performance
- Versatile, use for everything from light to heavy duty cleaning

Item #	Size
101204-00	4 - 1 Gal. Bottles
101205-00	5 Gal. Pail
101255-00	55 Gal. Drum

## CLEANERS / DEGREASERS

### Oven / Fryer / Grill Cleaner

Ready-To-Use Cleaner

Ready-To-Use

Item #	Size
100104-00	4 - 1 Gal. Bottles



**Breaks chemical bond of baked-on deposits, releasing them from oven surface.**

- Quickly penetrates and releases soils
- Non-fuming with fresh fragrance
- Versatile, for use on ovens, grills, and range hoods

### Drain and Trap Treatment

Drain and Grease Trap Cleaner and Maintainer

Ready-To-Use

Item #	Size
260012-00	12 - 32 oz. Bottles
260004-00	4 - 1 Gal. Bottles
260005-00	5 Gal. Pail



**Probiotics work to degrade grease and fatty acids, keeping drain lines clear.**

- Proprietary nutrients reduce production of harmful odor-inducing bacteria
- Neutral formula doesn't contain caustics or acids
- Won't damage pipes or traps

### Garbage Disposal Cleaner

Foaming Probiotic Garbage Disposal Cleaner and Freshener

Ready-To-Use

Item #	Size
2605P57-00	30 - 2 oz. Pouches



**Foaming probiotic cleaner and freshener for all types of garbage disposals.**

- Water-soluble packaging for simple dosing and application
- Helps prevent downstream clogging
- Powerful formula effective at degrading buildup in restaurant disposals
- Leaves kitchen sinks clean and running smoothly

### Drain Treatment Neem

Drain Treatment for Beverage Machines

Ready-To-Use

Item #	Size
Z321C12-00	400 - 16 Gram Pucks



**Formulated with probiotics to treat the drain lines and drain tray of beverage dispensing machines.**

- Preventative maintenance tool, helps control build-up in tray, lines, drain
- Cleans and freshens
- Helps prevent formation of sugar snakes
- Mitigates fruit flies by digesting their food source

### Grease Trap and Drain Cleaner

Grease Trap and Drain Cleaner Blocks

Ready-To-Use

Item #	Size
Z320C14-00	64 - 226 Gram Pucks



**Releases beneficial probiotics into the drain or grease trap to digest FOG and maintain clean, free-flowing systems.**

- Extended release block for continuous treatment eliminates the cost of daily or weekly treatments.
- Saves money by reducing the frequency of manual cleanouts, preventing blockages, and lowering grease disposal costs
- Reduces malodors associated with organic waste and sludge

### Dumpster Treatment

Dumpster Cleaner and Odor Eliminator

Concentrate 1:20

Item #	Size
260912-00	12 - 32 oz. Bottles
260904-00	4 - 1 Gal. Bottles
260905-00	5 Gal. Pail



**Triple odor control, fragrance, malodor counteractant and probiotic bacteria fight odors long after initial application.**

- Rich clinging foam for extended cleaning and odor control
- Use on any dumpster, trash receptacles, trash chutes and loading docks
- Use with Betco Foam Gun for maximum performance

## WAREWASHING

### Symlicity™ Blaze Machine Detergent

Machine Detergent Concentrate

Concentrate

Item #	Size
23973-00	4 - 5 Pint Jars



**Extra strength solid machine detergent for one-pass clean dishes, crystal clear glassware, and spotless silverware.**

- Solid, economical concentrate saves money
- Compact size for simple storage
- No waste, all product evacuates from capsule
- Prevents misuse, product can only be used in chemical management systems
- Molded jar handle for quick change out

**WAREWASHING**

**Symplicity™ Blaze NP Machine Detergent**  
Non-Phosphate Machine Detergent

Concentrate

Item #	Size
93273-00	4 - 5 Pint Jars



**Phosphate-free solid machine detergent removes heavy food soils in wide range of conditions.**

- Solid, economical concentrate saves money
- Low environmental impact, low VOCs and no APEs, NPEs, or EDTAs
- Versatile, works in high and low temp dish machines

**Symplicity™ Krystal Solid Rinse Aid**  
Solid Machine Rinse Aid

Concentrate

Item #	Size
268A3-00	1 - 5 Pint Jar



**Boasts excellent sheeting and quick drying.**

- Ultra low foaming formula controls wash tank foam
- No waste, all product is evacuated from capsule
- Economical, 100% active product
- For use in high or low temps, hard or soft water

**Symplicity™ Green Earth® Machine Detergent**  
Machine Detergent Concentrate

Concentrate

Item #	Size
24073-00	4 - 5 Pint Jars



**Metal-safe, phosphate-free solid machine detergent.**

- Solid, economical concentrate saves money
- Low environmental impact with low VOCs and no APEs, NPEs, or EDTAs
- Compact solid size ensures ease of storage and handling
- Performs well in high and low temp dish machines

**Symplicity™ All Temp Machine Detergent**  
Concentrated All Temperature Machine Detergent

Concentrate

Item #	Size
24474-00	4 - 1 Gal. Bottles
24478-00	5 Gal. Pail
24477-00	15 Gal. Drum
24455-00	55 Gal. Drum



**Non-chlorinated, all-temp machine detergent for excellent soil most water conditions.**

- Economical liquid concentrate saves money
- Effective in hard water
- SureConnect system enhances safety and ensures no contact, no spills
- Free rinsing, improved performance
- For use in both high or low temp machines

**Symplicity™ Metal Safe Detergent**  
Concentrated All Temp Machine Detergent

Concentrate

Item #	Size
244974-00	4 - 1 Gal. Bottles
244978-00	5 Gal. Pail
244977-00	15 Gal. Drum
244955-00	55 Gal. Drum



**Formulated to clean the toughest soils and prevent corrosion on aluminum, copper, pewter, brass and other soft metals.**

- Hard water tolerant, improved performance in all water conditions
- All temp, use in both high or low temp machines
- SureConnect, no contact, no spills, enhances safety and more
- Liquid concentrate, economical, saves money

**Symplicity™ All Temp Rinse Aid**  
Dish Machine All Temperature Rinse Aid

Concentrate

Item #	Size
24574-00	4 - 1 Gal. Bottles
24578-00	5 Gal. Pail



**Concentrated rinse additive delivers rapid sheeting for spot free drying in both low and high temperature dishmachines.**

- Controls foaming, improved performance
- Hard water effective, improved performance
- SureConnect, no contact, no spills, enhances safety and more
- Accelerates drying, labor saving, increased productivity
- Liquid concentrate, economical, saves money

**Symplicity™ Machine Rinse Aid**  
Dish Machine Rinse Aid

Concentrate

Item #	Size
26174-00	4 - 1 Gal. Bottles
26178-00	5 Gal. Pail



**All-temp, low-foaming dish machine rinse aid.**

- Designed specifically for low and high temp applications
- Provides quick drying and excellent sheeting action in soft water
- SureConnect system enhances safety and ensures no contact, no spills



**WAREWASHING**

**Symlicity™ Chlorinated Machine Detergent**  
Stain Fighting Detergent

Concentrate

Item #	Size
24178-00	5 Gal. Pail
24155-00	55 Gal. Drum



**Premium chlorinated high temp machine detergent for superior performance and optimal stain removal in most water conditions.**

- Economical liquid concentrate saves money
- Improved performance in all water conditions, including hard water
- Chlorine additive eliminates coffee and tea stains
- SureConnect enhances safety while ensuring no contact, no spills
- Free rinsing, improves rinsing performance

**Symlicity™ High Temp Rinse Aid**  
Premium Rinse Aid

Concentrate

Item #	Size
24278-00	5 Gal. Pail



**Premium concentrated rinse additive increases dish room productivity with unparalleled sheeting action leaving dishware and utensils spotless.**

- Economical liquid concentrate saves money
- Eliminates rewash and accelerates drying, saves labor
- Effective in hard water
- Low foam formula increases machine efficiency
- SureConnect system enhances safety while ensuring no contact, no spills

**Symlicity™ TDS Rinse Aid**  
Concentrated Liquid Rinse Aid

Concentrate

Item #	Size
24378-00	5 Gal. Pail



**Premium rinse aid formulated for hard water and high total dissolved solid water conditions.**

- Economical liquid concentrate saves money
- Prevents spotting, eliminates rewash
- Formulated for accelerated drying, saves labor
- Low foam formula increases machine efficiency
- Low environmental impact with low VOCs and no phosphorus, APES, NPES, or EDTAs

**Symlicity™ Low Temp Machine Sanitizer 215**  
EPA Registered Machine Sanitizer

Concentrate

Item #	Size
24674-00	4 - 1 Gal. Bottles
24678-00	5 Gal. Pail
24678-07	5 Gal. Pail (CA)



**Chlorinated sanitizer for use for use with low temp, low energy machines.**

- Active chlorine eliminates coffee and tea stains, attacks protein soils
- EPA registered with proven effectiveness
- Economical liquid concentrate saves money
- SureConnect system enhances safety and ensures no contact, no spills
- For use on stainless steel, glass, china, porcelain, and plastic

**Symlicity™ Pinnacle Presoak**  
Concentrated Flatware Presoak with Enzymes

Concentrate

Item #	Size
24771-00	2 - 5 Pint Jars



**Solid, dual active enzyme pre-soak penetrates hardened food soils and de-tarnishes silverware.**

- Enzymes quickly remove difficult stains
- Economical liquid concentrate saves money
- Spotless one-pass washing reduces rewash
- Compact solid offers convenient size and easy handling

**Flatware Presoak**  
Concentrated Liquid Presoak & Brightener

Concentrate 1 to 2 oz. per gallon

Item #	Size
259904-00	4 - 1 Gal. Bottles



**Effective double-duty presoak softens food soils on flatware prior to machine processing.**

- Brightens and shines stainless ware
- Spotless one-pass washing reduces rewash
- Economical liquid concentrate saves money
- Fast-acting, saves labor

**Symlicity™ Oxy Destainer Powder**  
Oxygen Stain Remover

Concentrate 1 to 2 oz. per gallon

Item #	Size
2450G9-00	2 - 8 Pound Jars



**An oxygen releasing compound formulated to remove stains from china and plasticware.**

- Reduces rewash, spotless one pass washing
- May be used as a presoaking solution prior to machine or manual dishwashing
- Effective on tea, coffee, cola and food soil stains
- Also an effective stain remover and deodorizer for laundry and hard surface cleaning

## WAREWASHING

### Symlicity™ L-S-R Delimer Dish Machine Descaler

Concentrate 2 to 4 oz. per gallon



**Premium acid-based lime scale remover/delimer with saffrafras fragrance.**

- Versatile, descales a variety of equipment
- Low foaming formula improves performance
- Economical concentrate saves money
- Fast-acting, saves labor

Item #	Size
24804-00	4 - 1 Gal. Bottles
24855-00	55 Gal. Drum

### Symlicity™ Betco® Bar Glass Detergent Low Foam Bar Glass Detergent

Concentrate 1 oz per 10 gallons



**Low foam bar glass detergent removes stubborn lipstick and other soils.**

- Will not affect beer head
- Effective cleaning
- Economical liquid concentrate saves money
- Low foaming formula improves performance
- Improved rinsing performance

Item #	Size
25704-00	4 - 1 Gal. Bottles

## DISPENSERS

### Spray and Foam Dispenser

Spray and Foam Dispenser that Degreases and Sanitizes



**For cleaning and sanitizing of meat rooms, food service/prep areas, processing/packaging areas, or anywhere large surface cleaning is needed.**

- Convenient dial rotates to wash, rinse, and sanitize operations
- Knob eliminates user mistakes and safeguards against inaccurate dilutions
- Comes complete with 25 ft. hose, spray gun, and foam wand
- Durable stainless steel construction

Item #	Size
92364-00	1 - Dispenser

### Symlicity™ Sink Station

Three Compartment Sink Food Service Dispenser



**Mounts directly above sinks and conveniently dispenses detergent and sanitizer in food service setting.**

- Levers ensure correct dilution
- Intended for use with Betco's superior detergents and sanitizers
- Use dilution dial, no metering tips

Item #	Size
91639-00	1 - Sink Station I Dispenser
91640-00	1 - Sink Station II Dispenser

### Drain Station Dispenser

AC or DC Drain Station



**Automatically dispenses drain maintainer to keep drains clean and prevent clogged drains due to fats, oils, and greases.**

- Simple to program and operate
- Dispenses from gallon bottles, 5 gallon pails, or 55 gallon drum
- Operates via AC or DC power

Item #	Size
91686-00	1 - AC Dispenser
91687-00	1 - DC Dispenser

### Dumpster Spray System

Automatic Dumpster Spray System



**Automatically treat dumpsters throughout the day with simple digital programming.**

- Intuitive and simple digital programming
- AC Power -plugs into any wall outlet
- Water resistant and durable ABS enclosure
- Adjustable brass nozzle from coarse spray to wide mist
- Runs on peristaltic pump - chemical can be placed in any convenient location

Item #	Size
90273-00	1 - Dumpster Spray System

### Foam Gun

Foam Gun for Dumpster Treatment



**Produces a thick rich foam for extended contact time on vertical surfaces.**

- No need to manually dilute, metering tips make sure you get the right dilution
- Use in conjunction with Dumpster Treatment for cleaning and deodorizing dumpsters and other trash receptacles
- Convenient small size and lightweight gun

Item #	Size
98474-00	1 - Foam Gun





## ***SYMPLICITY™***

*Save money, time, and water with superior products and programs that provide one-pass cleaning*

*Dispense concentrated products accurately without risk of chemical contact/spills using SureConnect*

*Value added training resources, assessment tools, and expert field support ensure smooth operations*



# Laundry Solutions

## **Clean, Safe, and Simple Innovation**

Betco formulas aim to provide the lowest end-use cost, meet or exceed sustainability guidelines, and—coupled with our diverse dispensers—form a comprehensive but efficient line for reduced inventory and simplified reordering. Many products also feature SureConnect—an easy-to-use, color-coded, closed loop dispensing system to alleviate waste and guesswork.



## BREAKS

### Symplicity™ Break Alkaline Builder

Concentrate



**Contains anti-redeposition agents that prevent graying and dulling.**

- Economical liquid concentrate saves money
- Improves detergent performance
- Performs well in hard water
- SureConnect system enhances safety and ensures no contact, no spills

Item #	Size
47078-00	5 Gal. Pail
47077-00	15 Gal. Drum
47055-00	55 Gal. Drum

### Symplicity™ Break Ultra Super Concentrated Laundry Break

Concentrate



**Ultra-concentrated alkaline builder breaks "soil to linen" bond.**

- Formulated to work synergistically with Detergent Ultra in the break/suds cycle
- Enhanced with wash water conditioners, it improves detergent performance delivering one wash clean results
- SureConnect system enhances safety and ensures no contact, no spills
- Recommended for use on all fabrics except for wool and silk

Item #	Size
49478-00	5 Gal. Pail
49477-00	15 Gal. Drum
49455-00	55 Gal. Drum

## DETERGENTS

### Symplicity™ Emulsifier Emulsifying Detergent

Concentrate



**Concentrated heavy duty detergent with emulsifying solvents for enhanced performance on difficult grease and oil soils.**

- Economical liquid concentrate saves money
- Effective for cleaning table linens and polyesters
- Effective in both warm and hot water
- SureConnect system enhances safety and ensures no contact, no spills
- Contains natural solvents, will not harm environment or linen

Item #	Size
47378-00	5 Gal. Pail
47377-00	15 Gal. Drum

### Symplicity™ Built Detergent High Performance Built Detergent

Concentrate



**Ultra-concentrated detergent with alkaline base prevents graying or dulling.**

- "One shot" product eliminates need for break
- Effective in a variety of water conditions
- Economical concentration saves money
- SureConnect system enhances safety and ensures no contact, no spills

Item #	Size
49278-00	5 Gal. Pail
49277-00	15 Gal. Drum
49255-00	55 Gal. Drum

### Symplicity™ Detergent High Performance Detergent

Concentrate



**Concentrated, high performance detergent with brightening agents and springtime fresh fragrance.**

- Prevents graying and dulling
- Can be used with or without a break
- Suitable for all temperatures
- Economical concentration saves money
- SureConnect system enhances safety and ensures no contact, no spills

Item #	Size
47174-00	4 - 1 Gal. Bottles
47178-00	5 Gal. Pail
47177-00	15 Gal. Drum
47155-00	55 Gal. Drum

### Symplicity™ Detergent Ultra Super-Concentrated Laundry Detergent

Concentrate



**Super concentrated high performance detergent removes difficult soils quickly.**

- Super concentrated non-built detergent to be used synergistically for improved performance with Symplicity Break Ultra in the break/suds cycle
- Breaks the "soil to linen" bond
- Economical concentration
- SureConnect system enhances safety and ensures no contact, no spills

Item #	Size
49678-00	5 Gal. Pail
49677-00	15 Gal. Drum
49655-00	55 Gal. Drum

**DETERGENTS**

**Symplicity™ Dye Free Fragrance Free Detergent**  
High Performance Detergent

Concentrate

Item #	Size
49878-00	5 Gal. Pail
49877-00	15 Gal. Drum



**Same great cleaning performance as Betco's detergent but without dyes and fragrance that cause allergies and sensitivities in some customers.**

- Prevents graying and dulling
- Suitable for all temperatures
- Economical concentration saves money
- SureConnect system enhances safety and ensures no contact, no spills

**Symplicity™ Duet - OPL**  
Detergent with Enzymes

Concentrate

Item #	Size
49578-00	5 Gal. Pail
49577-00	15 Gal. Drum
49555-00	55 Gal. Drum



**Non-built detergent with enzymes.**

- Concentrated synthetic detergent with powerful surfactants, soil devouring enzymes, and anti-redeposition agents
- Delivers one wash clean at a low end use cost
- Designed for use without the need for an alkaline break or an acid sour
- Safe on all water washable fabrics in hot or cold water

**Symplicity™ Duet-S**  
High Performance Detergent

Concentrate

Item #	Size
47471-00	2 - 5 Pint Jars



**100% active solid one-shot laundry detergent with enzymes and color-safe bleach.**

- Cleans/brightens linens, even in cold water
- Low environmental impact with low VOCs and no phosphorus, APes, NPes, or EDTAs
- Economical concentrate saves money
- Molded jar handle for quick change out

**Duet-L with Bleach Alternative**

Liquid All Fabric Laundry Detergent with Color Safe Bleach & Enzymes

Concentrate

Item #	Size
47504-00	4 - 1 Gal. Bottles
47505-00	5 Gal. Pail
47577-00	15 Gal. Drum
47555-00	55 Gal. Drum



**Super concentrated high performance detergent removes difficult soils quickly.**

- Easy-to-use, single liquid product
- Cleans/brightens linens even in cold water
- Chlorine scavenger extends life of colored linen
- Low environmental impact with low VOCs and no phosphorus, APes, NPes, or EDTAs

**DESTAINERS**

**Symplicity™ Destainer**  
Chlorine Destainer

Concentrate

Item #	Size
47774-00	4 - 1 Gal. Bottles
47778-00	5 Gal. Pail
47777-00	15 Gal. Drum
47755-00	55 Gal. Drum



**Concentrated laundry destainer for use on whites and colorfast linens.**

- Excellent labor-saving destaining power
- Brightens linen and extends useful life
- Economical concentration with optimum bleaching
- SureConnect system enhances safety and ensures no contact, no spills

**Symplicity™ Color Safe Destainer**  
Concentrated Color Safe Destainer

Concentrate

Item #	Size
47874-00	4 - 1 Gal. Bottles
47878-00	5 Gal. Pail
47877-00	15 Gal. Drum
47855-00	55 Gal. Drum



**Concentrated laundry destainer for use on all fabric types including colored fabrics.**

- No chlorine, safe on colors
- Promotes longer fabric life
- Brightens linen with minimized reclaim
- Economical liquid concentration
- SureConnect system enhances safety and ensures no contact, no spills



**SOURS & SOFTENERS**

**Symplicity™ Sour**  
Laundry Neutralizer

Concentrate



**Highly concentrated laundry sour for neutralizing alkalinity and controlling iron stains.**

- Controls pH, eliminating skin irritation
- Neutralizes alkaline residues, extending linen life
- Prevents graying and yellowing stains
- Economical concentration saves money
- SureConnect system enhances safety and ensures no contact, no spills

Item #	Size
48178-00	5 Gal. Pail
48177-00	15 Gal. Drum
48155-00	55 Gal. Drum

**Symplicity™ Sour Ultra**  
Super-Concentrated Laundry Sour

Concentrate



**Ultra-concentrated fabric neutralizer optimized for iron inhibition.**

- Eliminates graying caused by iron in the water supply
- Restores pH balance, reducing risk of skin irritation
- Economical concentration
- SureConnect system enhances safety and ensures no contact, no spills

Item #	Size
49774-00	4 - 1 Gal. Bottles
49778-00	5 Gal. Pail
49777-00	15 Gal. Drum
49755-00	55 Gal. Drum

**Symplicity™ Sour & Softener**  
Neutralizer and Fabric Softener

Concentrate



**Concentrated liquid laundry sour and softener combination product in springtime fresh fragrance.**

- Reduces static electricity and wrinkling
- Restores pH balance and reduces risk of skin irritation
- Dual action product reduces inventory and training
- Economical concentration
- SureConnect system enhances safety and ensures no contact, no spills

Item #	Size
48374-00	4 - 1 Gal. Bottles
48378-00	5 Gal. Pail
48377-00	15 Gal. Drum
48355-00	55 Gal. Drum

**Symplicity™ Softener**  
Fabric Softener

Concentrate



**Concentrated liquid fabric softener enhances operational efficiency in springtime fresh fragrance.**

- Reduces static electricity and wrinkling
- Speeds up drying time, saves time and energy
- Economical concentration saves money
- SureConnect system enhances safety and ensures no contact, no spills

Item #	Size
48278-00	5 Gal. Pail
48277-00	15 Gal. Drum

**Symplicity™ Sanitizing Softener 550**  
Softener Sanitizer

Concentrate



**Fabric softener concentrate reduces the number of odor-causing bacteria from wet contamination.**

- Residual self-sanitizing activity
- Softens clothes, eliminates chafing
- Reduces static electricity and wrinkling
- Economical concentration saves money
- SureConnect system enhances safety and ensures no contact, no spills

Item #	Size
47978-00	5 Gal. Pail
47977-00	15 Gal. Drum
47955-00	55 Gal. Drum

**PREWASH / STAIN REMOVERS**

**Symlicity™ PRO G**  
Healthcare Prewash

Ready-To-Use

Item #	Size
48816-00	6 - 32 oz. Bottles w/ 3 Triggers



**Targeted RTU spray for healthcare associated stain treatment.**

- Designed for healthcare specific stains
- Effective on a variety of soils
- Reduces rewash
- Fast-acting, saves labor

**Symlicity™ PRO S**  
Solvent Prewash for Broad Spectrum Organic Soils

Ready-To-Use

Item #	Size
48916-00	6 - 32 oz. Bottles w/ 3 Triggers



**Designed for organic stains, including oils and grease.**

- Reduces rewash, labor saving
- Fast-acting
- Versatile, effective on a variety of soils including shoe polish, oil based cosmetics, crayon, marker, shop grease, and tar
- Convenient, ready-to-use packaging

**Symlicity™ PRO A**  
Prewash for Broad Spectrum Organic Stains

Ready-To-Use

Item #	Size
49016-00	6 - 32 oz. Bottles w/ 3 Triggers



**Broad spectrum RTU enzyme spray for organic stain treatment.**

- Designed for a broad spectrum of stains including grass, food, and more
- Reduces rewash, labor saving
- Fast-acting
- Convenient, ready-to-use packaging

**Symlicity™ PRO R**  
Prewash for Rust and Metallic Stains

Ready-To-Use

Item #	Size
49116-00	6 - 32 oz. Bottles w/ 3 Triggers



**Spray for rust, tannin and metallic stain treatment.**

- Designed for rust and tannin stains
- Reduces rewash, labor saving
- Versatile, effective on a variety of soils
- Fast-acting
- Convenient ready-to-use packaging

**RECLAIMS**

**Symlicity™ Reclaim C**  
Reclaim Powder for Color Linens

Ready-To-Use

Item #	Size
48679-00	6 - 2 Pound Jars



**Formulated with water conditioners, high-alkaline salts, and colorsafe bleaching agents.**

- Restores linen, preserves investment
- Economical powder concentrate saves money
- Treats a variety of soils and stains
- Pre-measured and easy to use

**Symlicity™ Reclaim W**  
Reclaim Powder for White Linens

Ready-To-Use

Item #	Size
48579-00	6 - 2 Pound Jars



**A blend of water conditioners, alkaline salts, and chlorine that removes deeply embedded stains.**

- Restores linen, preserves investment
- Economical powder concentrate saves money
- Treats a variety of soils and stains
- Pre-measured and easy to use

**Symlicity™ Reclaim R**  
Reclaim Powder for Rust and Tannin Linens

Ready-To-Use

Item #	Size
48779-00	6 - 2 Pound Jars



**Reclaim powder for linen discolored from iron and alkali.**

- Formulated with iron inhibiting organic acids
- Restores linen, preserves investment
- Economical powder concentration saves money
- Treats a variety of soils and stains
- Pre-measured and easy to use



*Eliminate guesswork to accurately dilute chemical for greater time efficiency and cost savings up to 30%*

*Enhance cleaning staff safety by reducing the potential for accidental chemical contact and spills*

*A variety of 30+ high-performing cleaning and maintenance solutions meet a wide range of facility needs*



## Dilution Control Solutions

### The Most Innovative, Simple, and Versatile Systems

Single or multiple product, wall mounted or portable, water access or not, Betco has a dilution control system that is right for you. Our flagship program, FastDraw<sup>®</sup>, offers diverse dispensers to fill spray bottles, mop buckets, and automatic scrubbers and perform foaming spray applications, as well as spill-proof, number/color-coded bottles with built-in metering inserts.



## CHEMICAL MANAGEMENT

### FastDraw® Freedom Portable Dispensing System

Item #	Size
91290-00	12 - Dispensers



**No wall space, no problem! One versatile system does it all.**

- Fills spray bottles with little to no foam
- Sprays a clinging foam for extended contact on vertical surfaces.
- Fills buckets/autoscrubbers quickly and easily
- Hassle free operation, hook up the hose and turn the dial to choose the application
- Small, lightweight design for easy transportation

### FastDraw® 1 One Product Chemical Management Dispenser

Item #	Size
91043-00	1 - Action Gap Dispenser
91069-00	1 - Air Gap Dispenser



**Small dispenser can be used virtually anywhere.**

- Extremely easy to install and simple to change or replace product
- Instantly primes, when disengaged product drains back into container, no cross-contamination
- Numbered/color coded for simplified use/training
- Choose bottle or bucket fill options with the flick of a lever

### FastDraw® Pro 4 Product Locking Chemical Management System

Item #	Size
92682-00	1 - Action Gap Dispenser
92698-00	1 - Air Gap Dispenser



**The most durable, versatile and simple 4 bay locking chemical management system on the market.**

- Locking doors to prevent tampering or theft
- Space saving design, mounts to either a flat wall or in a corner
- Dispenses into both spray bottles and mop buckets/automatic scrubbers.
- Durable polypropylene construction, suitable for the toughest cleaning environments
- Bottle and bucket fill from each bay, simple one-hand bottle fill

### FastDraw® Foamer II Foaming Dispenser

Item #	Size
92216-00	1 - Dispenser



**Excellent thick, clinging foam ideal for vertical surface cleaning.**

- For use in large shower areas, food processing plants, walk-in coolers and other foaming applications
- Locks for continuous foaming action
- Conveniently transports on cleaning carts
- Easily screws onto FastDraw bottle
- Surecomfort™ handle

### FastDose™ Chemical Management System

Item #	Product Name	Size
15048-00	Top Flite™	6 - 32 oz. FastDose™ Bottles
17848-00	pH7 Ultra	6 - 32 oz. FastDose™ Bottles
18148-00	Deep Blue Concentrate	6 - 32 oz. FastDose™ Bottles
18848-00	Daily Scrub SC	6 - 32 oz. FastDose™ Bottles
34148-00	Quat-Stat™ 5	6 - 32 oz. FastDose™ Bottles
168348-00	Reinforce	6 - 32 oz. FastDose™ Bottles



**Ideal for portable dilution control.**

- Simplified chemical management without a dispenser
- Small, convenient containers are perfect for portable operations
- Economical dilutions as high as 1/8 oz. per gallon (1:1024) for extremely low cost
- Perfect for retail settings, convenience stores, and contract cleaning uses

### Green Earth® II 1 Button Dispenser

Item #	Size
91162-00	1 - Dispenser



**Simple low cost dispenser for one product use.**

- Dilutes and dispenses one product into buckets or automatic scrubbers
- Economical, lowest cost dispenser
- Small size, uses very little wall space

### Green Earth® II 4 x 4 Multi-Product Dispenser

Item #	Size
92720-00	1 - Dispenser



**Convenient Multi-Product Dispenser.**

- Dispenses up to eight products from one dispenser
- Simple and convenient one hand bottle fill
- Gas pump style hose for hands free filling

## CHEMICAL MANAGEMENT

### Quarterpack

Chemical Management System



**No wall space, no problem. Quarterpack is designed to use quart bottles that are formulated so one quart bottle can be added to a 5 gallon container, then filled with water.**

- Sturdy rack holds up to four products
- May be used with bottles, mop buckets or autoscrubbers
- Economical design, simple and convenient to use

Item #	Size
90099-00	1 - Quarterpack Rack
90100-00	1 - 5 Gallon Container

### FastPak™

Mobile Dilution Control Kit



**Combines professional, concentrated cleaners and disinfectants, with safe, precise dosing to enhance cleanliness, lower costs and simplify your operations.**

- Simple, easy-to-use, no training required, no complicated equipment
- Precise, easily measure 1/4 to 3 oz. with accurate results every time
- Safe, reduce unnecessary spills or splash risks
- Value, savings with concentrates and eliminates overdosing

Item #	Size
92535F6-00	32 oz. Bottles w/Proportioner
92531-00	1 - Proportioner

### SoliChem™ Grease Solv

Solid Industrial Degreaser



**Rivals traditional degreasers with the added benefit of probiotics that aide in digesting organic material, creating fewer issues downstream.**

- High count non-pathogenic probiotics for better cleaning
- Probiotic package that targets petroleum soils and other industrial organics
- For use only with Betco® GeneSys™ Scrubbers
- Use in industrial floor cleaning and degreasing
- Up to 80% lower cost versus traditional liquids
- 350 gallons of solution per solid

Item #	Size
821E3-00	4 - 575 Gram Solids

### SoliChem™ pH7 Ultra

Solid Neutral Floor Cleaner



**High-performance daily, neutral floor cleaner that will keep floors looking brighter and cleaner, every day.**

- Controlled foam, for use only with Betco® GeneSys™ mid size scrubbers
- Neutral pH, won't attack, haze, dull floor gloss or leave a film
- Dissolves and removes a wide variety of soils, leaving floors film free
- Up to 80% lower cost versus traditional liquids
- 350 gallons of solution per solid

Item #	Size
819E3-00	4 - 575 Gram Solids

### Fortify™ Foam Control

Concentrated Solid Antifoam Puck



**Quickly penetrates and knocks down foam to eliminate problems associated with recovery tank foaming.**

- Fast acting, breaks foam on contact
- Saves time, eliminates downtime and wasted effort in dumping recovery tanks
- Versatile, can be used in Betco's GeneSys™ scrubber series and put into the debris tray of other auto scrubber tanks

Item #	Size
820E3-00	4 - 275 Gram Pucks

### SoliChem™ Combo Pack - Grease Solv

Solid Industrial Degreaser & Fortify™ Foam Control



**Pack combines Grease Solv solids and Fortify™ Foam Control Pucks.**

- Probiotic Grease Solv formula rivals traditional degreasers
- Pucks quickly penetrate and knock down foam
- For use with Betco® GeneSys™ walk-behind scrubbers

Item #	Size
92493E4-00	4 - 575 Gram Solids 4 - 275 Gram Pucks

### SoliChem™ Combo Pack - pH7 Ultra

Solid Neutral Floor Cleaner & Fortify™ Foam Control



**Pack combines pH7 Ultra solids and Fortify™ Foam Control Pucks.**

- pH7 Ultra formula keeps floors looking brighter and cleaner
- Pucks quickly penetrate and knock down foam
- For use with Betco® GeneSys™ walk-behind scrubbers

Item #	Size
92686E4-00	4 - 575 Gram Solids 4 - 275 Gram Pucks



## PRODUCT SELECTION GUIDE

PRODUCT NAME	FASTDRAW <sup>®</sup>	FASTDOSE <sup>™</sup>	FASTPAK <sup>™</sup>	QUARTERPACK	SOLICHEM <sup>™</sup>	INFO
<b>FLOOR CARE</b>						
Betco <sup>®</sup> One Step	✓					pg. 10
Game Time Cleaner	✓					pg. 15
Extreme <sup>®</sup> Ultra	✓			✓		pg. 8
Crete Rx <sup>™</sup> Densiclean <sup>™</sup>	✓					pg. 11
STG Cleaner	✓					pg. 9
FiberPRO <sup>®</sup> Es-Steam <sup>™</sup>	✓					pg. 14
Reinforce	✓	✓				pg. 9
Daily Scrub SC	✓	✓				pg. 10
Green Earth <sup>®</sup> Daily Floor Cleaner	✓					pg. 9
No-Rinse Floor Cleaner	✓					pg. 32
<b>GENERAL CLEANING</b>						
Deep Blue	✓	✓		✓		pg. 19
Clear Image	✓		✓			pg. 19
Green Earth <sup>®</sup> Glass Cleaner	✓					pg. 19
Top Flite <sup>™</sup>	✓	✓	✓	✓		pg. 18
Spectaculoso <sup>™</sup>	✓		✓			pg. 18
pH7 Ultra	✓	✓	✓		✓	pg. 10
Green Earth <sup>®</sup> Peroxide Cleaner	✓					pg. 18
Push <sup>®</sup> Classic Mint	✓					pg. 18
Green Earth <sup>®</sup> Natural All Purpose Cleaner	✓					pg. 19
<b>RESTROOM</b>						
AF79 Concentrate	✓			✓		pg. 25
Sure Bet <sup>™</sup> II	✓					pg. 24
Green Earth <sup>®</sup> Restroom Cleaner	✓					pg. 25

**PRODUCT SELECTION GUIDE**

PRODUCT NAME	FASTDRAW®	FASTDOSE™	FASTPAK™	QUARTERPACK	SOLICHEM™	INFO
<b>DISINFECTANTS</b>						
AF315	✓			✓		pg. 27
pH7Q	✓					pg. 27
pH7Q Dual	✓					pg. 27
Quat-Stat™ 5	✓	✓				pg. 27
Triforce	✓					pg. 27
Versifect™	✓					pg. 27
Pine Quat			✓			pg. 28
Daily Disinfectant Dual	✓					pg. 27
<b>FOOD SERVICE</b>						
Spray Foam Ultra	✓					pg. 33
Symplicity™ Sanibet™ Multi-Range	✓					pg. 32
Symplicity™ In-Sync	✓					pg. 31
Symplicity™ Citrusuds™	✓					pg. 31
<b>DEODORIZERS</b>						
SenTec® Mountain Meadow	✓					pg. 29
SenTec® Pure Linen	✓					pg. 29
Best Scent™ Ocean Breeze	✓					pg. 29
Best Scent™ Lemon Zest	✓					pg. 29
<b>INDUSTRIAL</b>						
Citrus Chisel	✓			✓		pg. 21
Speedex Concentrate	✓					pg. 21
Green Earth® Velocity®	✓					pg. 21
Green Earth® Natural Degreaser	✓					pg. 21
Grease Solv Degreaser					✓	pg. 22



*Wide selection of world-class foaming and lotion/gel cleanser and sanitizer formulas and fragrances*

*Choose between top-of-the-line dispensing systems or small countertop and high-volume bulk solutions*

*Training resources ensure successful implementation of a complete hand hygiene program*



## Hand Hygiene Solutions

### Format That Best Serves Your Facility's Needs

Your one partner in hand hygiene, we have a comprehensive line for a healthy environment in any facility. Clario is the most versatile, cost-effective program for institutional dispensing, Triton sets a new value in heavy-duty and large-quantity industrial dispensing, and we even have you covered with bulk/countertop options for convenient deployment anywhere.





## FOAMING SKIN CLEANSERS

### Green Earth™ Clear Foaming Skin Cleanser

Dye Free and Fragrance Free Foaming Skin Cleanser



**Cleans hands without impacting the skin, will not cause dryness or skin irritation, encourages frequent hand washing.**

- Dye free and fragrance free
- Gentle and mild to hands, will not cause dryness or irritation
- Encourages frequent hand washing

Item #	Size
71504-00	4 - 1 Gal. Bottles
71529-00	6 - 1000 mL Clario Bags

### Green Earth™ Foaming Skin Cleanser

Luxurious Foaming Skin Cleanser



**Foaming skin cleanser with emollients.**

- Gentle and mild to hands, will not cause dryness or irritation
- Has a very light, pleasant scent
- Encourages frequent hand washing

Item #	Size
78104-00	4 - 1 Gal. Bottles
78129-00	6 - 1000 mL Clario Bags

### Pink Foaming Skin Cleanser

Mildly Fragranced Foaming Skin Cleanser



**Ultra mild and gentle to hands.**

- Emollients moisturize skin, encouraging frequent hand washing
- Cleans light to medium soils
- Mild scent

Item #	Size
75004-00	4 - 1 Gal. Bottles
75029-00	6 - 1000 mL Clario Bags
750E9-00	12 - 500 mL Pump Bottles
75055-00	55 Gal. Drum

### E2 Antibacterial Foaming Skin Cleanser

Dye, Fragrance and Triclosan Free Foaming Cleanser



**E2 rated antibacterial foaming skin cleanser for food service and healthcare applications.**

- Dye free and fragrance free
- Preferred skin cleanser for the food service industry
- Clean rinsing, leaving hands without dryness, stickiness, or residue

Item #	Size
71704-00	4 - 1 Gal. Bottles
71729-00	6 - 1000 mL Clario Bags
71755-00	55 Gal. Drum

### Foaming Antibacterial Skin Cleanser

Foaming Skin Cleanser



**Aloe enriched, antibacterial foaming skin cleanser.**

- Contains 0,25 benzalkonium chloride for effective broad spectrum germ kill
- Cleans and moisturizers, will not cause dryness or skin irritation
- Quick-acting antibacterial foam soap for general hand washing

Item #	Size
75104-00	4 - 1 Gal. Bottles
75129-00	6 - 1000 mL Clario Bags
75129-07	6 - 1000 mL Clario Bags (CA)
75155-00	55 Gal. Drum

### UltraBlue™ Antibacterial Foaming Skin Cleanser

Luxury Foam Antibacterial Skin Cleanser



**Ultra thick foam helps prevent the spread of infection and encourages frequent hand washing.**

- Ideal for healthcare facilities
- Contains benzalkonium chloride for effective broad spectrum germ kill
- For skin care use in daycare, hospitals, nursing homes, physician offices, dental offices and clinics

Item #	Size
75904-00	4 - 1 Gal. Bottles
75929-00	6 - 1000 mL Clario Bags
759E9-00	12 - 500 mL Pump Bottles

## LOTION SKIN CLEANSERS

### Green Earth™ Lotion Skin Cleanser

Moisturizing Lotion Skin Cleanser



**Luxurious lotion skin cleanser.**

- Gentle to hands, cleans light to medium soils
- Contains moisturizers, will not cause dryness or irritation
- Fresh and clean fragrance

Item #	Size
78329-00	6 - 1000 mL Clario Bags
78304-00	4 - 1 Gal. Bottles

**LOTION SKIN CLEANSERS**

**Pink Lotion Skin Cleanser**

Pearlized Skin Cleanser with Emollients



**pH balanced ultra mild lotion skin cleanser formulated with emollients.**

- Ultra mild lotion soap gentle moisturizes the skin while protecting skin health
- Clean rinsing and non-irritating
- Refreshing scent for a pleasant hand wash

Item #	Size
11219-00	12 - 900 mL Bag in Box
11229-00	6 - 1000 mL Clario Bags
11204-00	4 - 1 Gal. Bottles
11262-00	6 - 2 Liter Triton Bottles
11255-00	55 Gal. Drum
11262-00	6 - 2 Liter Triton Bottles

**Antibacterial Lotion Skin Cleanser**

Pearlized Antibacterial Skin Cleanser with Chloroxylenol (PCMX)



**Gentle on the skin, will not cause dryness or irritation.**

- Contains PCMX to help reduce microorganisms on the skin
- Formulated with moisturizers, will not cause dryness or skin irritation
- Tropical hibiscus scent encourages frequent hand washing

Item #	Size
14119-00	12 - 900 mL Bag in Box
141E9-00	12 - 500 mL Pump Bottles
14129-00	6 - 1000 mL Clario Bags
14104-00	4 - 1 Gal. Bottles
14155-00	55 Gal. Drum

**Pearlized White Lotion Skin Cleanser**

Lotion Skin Cleanser with Emollients



**Leaves hands soft and refreshed.**

- pH balanced so it's non-drying and non-irritating
- Leaves no residue, hands feel clean and soft
- Gentle enough for frequent hand washing

Item #	Size
71904-00	4 - 1 Gal. Bottles

**HAND SANITIZERS**

**Alcohol Free Foaming Hand Sanitizer**

Freshly Scented, Alcohol Free Foaming Hand Sanitizer



**For alcohol restricted and non-flammable applications.**

- For use when soap and water are not available
- Contains 0.13% benzalkonium chloride that kills most germs that can cause disease
- Leaves hands fresh with no sticky residue

Item #	Size
752E9-00	12 - 500 mL Pump Bottles
75229-00	6 - 1000 mL Clario Bags
75204-00	4 - 1 Gal. Bottles
75255-00	55 Gal. Drum
75227-00	275 Gal. Tote

**Advanced Alcohol Foaming Hand Sanitizer**

Ethanol Based Foaming Hand Sanitizer with Aloe



**Kills 99.999% of most common germs in as little as 15 seconds.**

- For use when soap and water are not available
- 70% ethyl alcohol reduces germs on hands
- Emollients moisturize the skin, will not cause dryness or irritation

Item #	Size
795E9-00	12 - 500 mL Pump Bottles
79529-00	6 - 1000 mL Clario Bags
79504-00	4 - 1 Gal. Bottles
79555-00	55 Gal. Drum

**E3 Alcohol Free Foaming Sanitizer**

Fast Drying, Moisturizing Hand Sanitizer for Food Service



**Alcohol free foaming sanitizer for use in all regulated food processing and food service environments.**

- For use when soap and water are not available
- Contains 0.1% benzalkonium chloride
- Emollients moisturize the skin, will not cause dryness or irritation

Item #	Size
77929-00	6 - 1000 mL Clario Bags
77904-00	4 - 1 Gal. Bottles
77955-00	55 Gal. Drum

**Advanced Alcohol Gel Sanitizer**

Ethanol Based Gel Hand Sanitizer with Aloe



**Fast drying, lightly fragranced gel sanitizer.**

- Kills 99.999% of most common germs that can cause disease
- 70% ethyl alcohol evaporates quickly with no sticky residue
- Moisturizes and conditions skin

Item #	Size
796E9-00	12 - 500 mL Pump Bottles
79619-00	12 - 900 mL Bag in Box
79629-00	6 - 1000 mL Clario Bags
79629-07	6 - 1000 mL Clario Bags (CA)
79604-00	4 - 1 Gal. Bottles
79655-00	55 Gal. Drum

## INDUSTRIAL SKIN CLEANSERS

### HD Orange Hand Cleaner

Heavy Duty Hand Cleaner with Citrus and Fine Pumice



**Heavy duty skin cleanser, with citrus and pumice.**

- Ideal for heavy duty industrial use
- Formulated with natural citrus and fine milled Aztec pumice for quick removal of grease and grime
- For skin care use in a variety of industrial settings including manufacturing, machine shops, maintenance areas and automotive shops

Item #	Size
79262-00	6 - 2 Liter Triton Bottles
79231-00	4 - 4 Liter Triton Bottles
79244-00	4 - 1 Gal. Flat Top Disp.
79255-00	55 Gal. Drum

### XHD Hand Cleaner

Extra Heavy Duty Hand Cleaner with Soy and Walnut Shell Scrubber



**Heavy duty skin cleanser for removing heavy grease, carbon, tar and oil.**

- Contains all natural, refined walnut shell scrubbing particles
- Contains conditioners to prevent drying and cracking
- For skin care use in a variety of industrial settings including manufacturing, machine shops, maintenance areas and automotive shops

Item #	Size
79362-00	6 - 2 Liter Triton Bottles
79331-00	4 - 4 Liter Triton Bottles
79344-00	4 - 1 Gal. Flat Top Disp.

### BiCarbonX™ Premium Industrial Hand Cleaner

Premium Industrial Hand Cleaner and Conditioner, Timber Jack Scent



**Offers a skin-conditioning experience the toughest workers deserve.**

- Increases skin moisture while reducing absenteeism due to skin issues
- Natural deodorizers leaves a fresh, clean scent
- Has no negative downstream environmental effects

Item #	Size
70806-00	4 - 2 Liter Triton Bottles
70831-00	4 - 4 Liter Triton Bottles
70804-00	4 - 1 Gal. Bottles

## HAIR & BODY CLEANSERS

### Foaming Hand, Hair and Body Shampoo

Vitamin E Enriched Hair and Body Shampoo



**Thick, rich foam is gentle on the skin and hair, and will not cause dryness or irritation.**

- Use almost 50% less liquid for each wash
- Cleans and moisturizes with a fresh, neutral scent
- For skin care use in a variety of public facilities including schools, daycare centers, health spas, locker rooms, hotels and resorts

Item #	Size
75329-00	6 - 1000 mL Clario Bags
75304-00	4 - 1 Gal. Bottles
75355-00	55 Gal. Drum

### Lotion Hand, Hair and Body Shampoo

Pleasantly Scented Hair and Body Shampoo



**Designed to leave hair and skin delicate, soft, and conditioned.**

- Clean rinsing leaves hair silky and manageable
- More economical and sanitary than bar soaps
- For skin care use in a variety of public facilities including schools, daycare centers, health spas, locker rooms, hotels and resorts

Item #	Size
77319-00	12 - 900 mL Bag in Box
77329-00	6 - 1000 mL Clario Bags
77362-00	6 - 2 Liter Triton Bottles
77304-00	4 - 1 Gal. Bottles
77355-00	55 Gal. Drum

## DISPENSERS

### Clario® Manual Dispensers

Foaming and Lotion Manual Dispensers



**Durable cost effective dispenser that is easy to refill and easy to use.**

- Large site glass for easy product identification and maintenance
- Pre-drilled backplate designed to reduce installation time
- Sanitary factory sealed 1,000 mL bags prevent contamination
- ADA compliant

Item #	Size
92542-00	12 - Foam White Manual
92543-00	12 - Foam Black Manual
92540-00	12 - Lotion White Manual
92541-00	12 - Lotion Black Manual



## DISPENSERS

### Clario® Touch Free Dispensers

Foaming Touch Free Dispensers



**Touch free, durable, easy to refill with 98% no-waste evacuation.**

- Use same 1000 mL bags as Clario® manual dispensers.
- Automatic dispensing promotes increased hand washing for a healthier environment
- Batteries included, no extra expense at installation
- Durable ABS construction with easily cleaned cover

Item #	Size
91866-00	6 - Foam White TF Disp.
91968-00	6 - Foam Black TF Disp.

### Drip Tray

Plastic Dispenser Drip Tray



**Plastic dispenser tray can be used with Clario® Touch Free and Clario manual dispensers.**

- Catches any misses to keep floors clean
- Easily attaches to wall under each dispenser

Item #	Size
92351-00	1 - Drip Tray

### Clario® TF Black Floor Stand

Black Metal Floor Stand Designed for Clario® Touch Free Dispenser



**Black metal floor stand makes sanitizing convenient.**

- Sturdy construction and stable design prevents tipping
- Easy installation, hardware included
- Pleasing design fits any facility
- Ideal for use where wall mounted dispensers are not practical

Item #	Size
92060-00	1 - Floor Stand

### Flat Top Gallon Dispenser Pump and Wall Bracket

Pump and Wall Bracket for Flat Top Gallon Dispensers



**Great for both grit and lotion hand cleansers.**

- For use with flat top dispenser containers
- For skin care use in a variety of industrial settings including manufacturing, machine shops, maintenance areas and automotive shops

Item #	Size
90106-00	1 - Dispenser Pump
90105-00	1 - Wall Bracket

### Triton® HD 2 L Dispenser

Dispenser for 2 Liter Triton Bottles



**Heavy duty, excellent for high traffic, high volume areas.**

- Sanitary factory sealed bottle
- Precise portion control
- Opaque bottle makes it easy to determine when it's time to replace

Item #	Size
91827-00	6 - 2 Liter Dispensers

### Triton® HD 4 L Dispenser

Dispenser for 4 Liter Triton Bottles



**Heavy duty, excellent for high traffic, high volume areas.**

- Opaque bottle makes it easy to determine when it's time to replace
- Sanitary factory sealed bottle
- Precise portion control

Item #	Size
91828-00	4 - 4 Liter Dispensers



*Equipment innovations from Betco reduce labor costs, increase productivity, and optimize processes*

*Machines are built to provide years of reliable service and backed by an industry-leading warranty policy*

*Technical service team is available to assist with troubleshooting, repairs, and general questions*



## Equipment Solutions

### That Meet the Need

We've applied 70+ years of experience into creating cutting-edge equipment that cleans better, faster. Our line features next-generation automatic scrubbers from small area to rider, durable workhorse burnishers and floor machines, the market's most efficient stripping machines, and more—many of which feature best-in-class specifications and innovative technologies.



## SMALL AREA AUTOMATIC SCRUBBERS

### MotoMop® Small Area Cleaning Machine

Up to 7,320 sq. ft. / hr.



#### True clean, up to 400% faster!

- Removes up to 98% more soil than a mop and bucket
- Small area cleaning and spill clean-up and recovery
- 360° motion to clean in all directions
- Lithium ion battery with 3 year full warranty

Length: 17.5"  
Width: 16"  
Height: 51"

Item #	Description
E84700-00	MotoMop® Automatic Scrubber

### GeneSys™ 15 15" Cylindrical Automatic Scrubber

Up to 10,000 sq. ft. / hr.



#### Greatest versatility, clean any small area!

- Powerful cylindrical scrub brush for hard surfaces
- Multiple tool options create 4 machines in 1 - carpet extractor, upholstery spotter, wet/dry vacuum, and solution sprayer
- Ergonomic handle design, easy operator controls
- 15" medium duty brush included

Length: 31"  
Height: 22"  
Width: 19"

Item #	Description
E88900-00	GeneSys™ 15" Cylindrical Automatic Scrubber

#### Optional Accessories

- E88624-00 - Brush, General Scrubbing
- E88681-00 - Brush, Grit Stripping
- EP50167-00 - Hard Surface Tool Kit
- EP50168-00 - Carpet and Upholstery Tool Kit
- E88976-00 - Solution Spray Wand
- EP50170-00 - Complete Master Tool Kit

### Genie™ B All Purpose Automatic Scrubber

Up to 11,560 sq. ft. / hr.



#### Goes anywhere a mop and bucket can go!

- Compact size cleans tight spaces
- Low 69 dB noise level is ideal for use in occupied spaces
- Onboard charger with maintenance free battery
- Use for daily scrubbing of VCT, resilient, concrete, textured/grouted floors
- General purpose scrub brush included

Length: 27"  
Width: 17"  
Height: 17" storage  
Height: 44" upright

Item #	Description
E83039-00	Genie™ B All Purpose Automatic Scrubber

#### Optional Accessories

- E82408-00 - Pad Holder
- E82526-00 - Brush, Medium Scrubbing
- EP50061-00 - Battery & Charger Kit

## GENESYS™ 20" AUTOMATIC SCRUBBERS

### GeneSys™ 20D 20" Automatic Scrubber w/ Pad Assist

Up to 22,500 sq. ft. / hr.



#### Clean faster and with less effort.

- Best performance specifications in its class
- SoliChem™ Technology (option) reduces daily chemical costs by up to 80%
- Airoflex® Squeegee Technology (standard) increases vacuum by up to 40%
- Fortify™ Asset Protection & Management suite focuses on extending machine life and lowering cost of ownership
- One 20" pad holder included

Length: 51"  
Height: 42"  
Width: 21" w/o squeegee  
Width: 30" w/ squeegee

Item #	Description
E26700-00	w/ 2-12V 130AH Wet Battery, On-board Charger
E26704-00	w/ 2-12V 110AH AGM Battery, On-board Charger

#### Optional Accessories

- E29540-00 General Purpose Brush - 20-inch
- E29011-00 Red Pads - 20-inch
- SoliChem™ Technology
- Wet Battery Protection System
- Armor™ Telemetry
- Programmable Timer Lock-out
- SoliChem™ Chemicals - pH7 Ultra or Grease Solv

### GeneSys™ 20DT 20" Automatic Scrubber w/ Transaxle Drive

Up to 22,500 sq. ft. / hr.



#### Clean faster and with less effort.

- Best performance specifications in its class
- SoliChem™ Technology (option) reduces daily chemical costs by up to 80%
- Airoflex® Squeegee Technology (standard) increases vacuum by up to 40%
- Fortify™ Asset Protection & Management suite focuses on extending machine life and lowering cost of ownership
- One 20" pad holder included

Length: 51"  
Height: 42"  
Width: 21" w/o squeegee  
Width: 30" w/ squeegee

Item #	Description
E26800-00	w/ 2-12V 130AH Wet Battery, On-board Charger
E26804-00	w/ 2-12V 110AH AGM Battery, On-board Charger

#### Optional Accessories

- E29540-00 General Purpose Brush - 20-inch
- E29011-00 Red Pads - 20-inch
- SoliChem™ Technology
- Wet Battery Protection System
- Armor™ Telemetry
- Programmable Timer Lock-out
- SoliChem™ Chemicals - pH7 Ultra or Grease Solv

### GeneSys™ 20ORB 20" Orbital Automatic Scrubber w/ Traction Drive

Up to 22,500 sq. ft. / hr.



#### Powerful cleaning and finish removal in one compact, quiet design.

- Boasts 110 lb of down pressure - the highest down pressure in the category.
- Removes layers of even the hardest finishes in one pass.
- Ideal for day cleaning or finish removal at up to 80% faster than traditional stripping.
- SoliChem™ Technology (option) reduces daily chemical costs by up to 80%

Length: 46"  
Height: 42"  
Width: 21" w/o squeegee  
Width: 30" w/ squeegee

Item #	Description
E26900-00	w/ 2-12V 130AH Wet Battery, On-board Charger
E26904-00	w/ 2-12V 110AH AGM Battery, On-board Charger

#### Optional Accessories

- E29540-00 General Purpose Brush - 20-inch
- E29011-00 Red Pads - 20-inch
- SoliChem™ Technology
- Wet Battery Protection System
- Armor™ Telemetry
- Programmable Timer Lock-out
- SoliChem™ Chemicals - pH7 Ultra or Grease Solv

Airoflex® is a registered trademark of the Midwest Rubber Company  
Armor™ is a trademark of USA Clean

## CREWMAN™ 20" AUTOMATIC SCRUBBERS

### Crewman™ AS20B 20" Automatic Scrubber w/ Brush Assist



**Simple design and rugged construction provide great value.**

- Simple touch button controls make training easy
- Weighted squeegee maximizes water recovery
- Sleek body design is perfect for small and congested areas
- 20" pad holder is included

Up to 15,000 sq. ft. / hr.

Length: 43"  
Height: 38"  
Width: 22" w/o squeegee  
Width: 30" w/ squeegee

Item #	Description
E29968-00	w/ 2-12V 115AH Wet Battery, 12 Amp Charger
E29969-00	w/ 2-12V 130AH Wet Battery, 12 Amp Charger
E29967-00	w/ 2-12V 110AH AGM Battery, 12 Amp Charger

#### Optional Accessories

- E88330-00 - Brush, General Scrubbing
- E88269-00 - Brush, Medium Scrubbing
- E88270-00 - Brush, Heavy Duty Scrubbing
- E88271-00 - Brush, Grit Stripping

## GENESYS™ 20" MID SIZE AUTOMATIC SCRUBBERS

### GeneSys™ 26D 26" Disk Auto Scrubber



**Clean faster and with less effort.**

- Best performance specifications in its class
- SoliChem™ Technology (standard) reduces daily chemical costs by up to 80%
- Airoflex® Squeegee Technology (standard) increases vacuum by up to 40%
- Fortify™ Asset Protection & Management suite focuses on extending machine life and lowering cost of ownership
- Two 13" pad holders included

Up to 29,000 sq. ft. / hr.

Length: 55"  
Width: 28" w/o squeegee  
Width: 35" w/ squeegee  
Height: 44"

Item #	Description
E27200-00	GeneSys™ 26D - (4) 6V 260AH Wet Battery
E27212-00	GeneSys™ 26D - (4) 6V 220AH AGM Battery

Additional configurations available

#### Optional Accessories

- Wet Battery Protection System
- Armor™ Telemetry
- BlueTooth Battery Gauge
- Programmable Timer Lock-out
- General Purpose Brush
- SoliChem™ Chemicals - pH7 Ultra or Grease Solv

### GeneSys™ 28D 28" Disk Auto Scrubber



**Clean faster and with less effort.**

- Best performance specifications in its class
- SoliChem™ Technology (standard) reduces daily chemical costs by up to 80%
- Airoflex® Squeegee Technology (standard) increases vacuum by up to 40%
- Fortify™ Asset Protection & Management suite focuses on extending machine life and lowering cost of ownership
- Two 14" pad holders included

Up to 31,500 sq. ft. / hr.

Length: 56"  
Width: 30" w/o squeegee  
Width: 40" w/ squeegee  
Height: 44"

Item #	Description
E27300-00	GeneSys™ 28D - (4) 6V 260AH Wet Battery
E27312-00	GeneSys™ 28D - (4) 6V 220AH AGM Battery

Additional configurations available

#### Optional Accessories

- Wet Battery Protection System
- Armor™ Telemetry
- BlueTooth Battery Gauge
- Programmable Timer Lock-out
- General Purpose Brush
- SoliChem™ Chemicals - pH7 Ultra or Grease Solv

### GeneSys™ 32D 32" Disk Auto Scrubber



**Clean faster and with less effort.**

- Best performance specifications in its class
- SoliChem™ Technology (standard) reduces daily chemical costs by up to 80%
- Airoflex® Squeegee Technology (standard) increases vacuum by up to 40%
- Fortify™ Asset Protection & Management suite focuses on extending machine life and lowering cost of ownership
- Two 16" pad holders included

Up to 36,000 sq. ft. / hr.

Length: 59"  
Width: 34" w/o squeegee  
Width: 45" w/ squeegee  
Height: 44"

Item #	Description
E27500-00	GeneSys™ 32D - (4) 6V 260AH Wet Battery
E27512-00	GeneSys™ 32D - (4) 6V 220AH AGM Battery

Additional configurations available

#### Optional Accessories

- Wet Battery Protection System
- Armor™ Telemetry
- BlueTooth Battery Gauge
- Programmable Timer Lock-out
- General Purpose Brush
- SoliChem™ Chemicals - pH7 Ultra or Grease Solv

### GeneSys™ 28ORB 28" Orbital Auto Scrubber



**Clean faster and with less effort.**

- Best performance specifications in its class
- SoliChem™ Technology (standard) reduces daily chemical costs by up to 80%
- Airoflex® Squeegee Technology (standard) increases vacuum by up to 40%
- Fortify™ Asset Protection & Management suite focuses on extending machine life and lowering cost of ownership
- One 28" x 14" pad drive plate included

Up to 31,500 sq. ft. / hr.

Length: 54"  
Width: 29" w/o squeegee  
Width: 40" w/ squeegee  
Height: 44"

Item #	Description
E27400-00	GeneSys™ 28ORB - (4) 6V 260AH Wet Battery
E27412-00	GeneSys™ 28ORB - (4) 6V 220AH AGM Battery

Additional configurations available

#### Optional Accessories

- Wet Battery Protection System
- Armor™ Telemetry
- BlueTooth Battery Gauge
- Programmable Timer Lock-out
- General Purpose Brush
- SoliChem™ Chemicals - pH7 Ultra or Grease Solv

Airoflex® is a registered trademark of the Midwest Rubber Company  
Armor™ is a trademark of USA Clean



## STEALTH™ 20" AUTOMATIC RIDING SCRUBBERS

### Stealth™ DRS21BT MicroRiding Scrubber

Up to 30,000 sq. ft. / hr.



#### The most compact ride-on scrubber.

- Cleans 30,000 square feet per hour, reducing cleaning costs by 36%
- Exclusive ECO-Mode technology reduces noise level to 54 dBA and lowers energy consumption
- Large tank size provides extended runtime
- 21" pad holder included

Length: 52"  
Height: 47"  
Width: 23" w/o squeegee  
Width: 30" w/ squeegee

Item #	Description
E29961-00	w/ 2-12V 130AH Wet Battery, 12 Amp Charger
E29962-00	w/ 2-12V 110AH AGM Battery, 12 Amp Charger
E29963-00	w/ 2-12V 155AH Wet Battery, 12 Amp Charger

#### Optional Accessories

- E22654-00 - Brush, General Scrubbing
- E22655-00 - Brush, Medium Scrubbing
- E22656-00 - Brush, Heavy Duty Scrubbing

### Stealth™ DRS26BT Automatic Rider Scrubber

Up to 42,000 sq. ft. / hr.



#### Highest productivity, simple design.

- Innovative design is 4X quieter than other automatic scrubbers on the market
- 1-Touch Intelligent Drive Control System
- Simple operator controls
- Ideal for day cleaning
- Two 13" pad holders included

Length: 62"  
Height: 52"  
Width: 27" w/o squeegee  
Width: 35" w/ squeegee

Item #	Description
E29926-00	w/ 4-6V 235AH Wet Battery, 25 Amp Charger
E29927-00	w/ 4-6V 200AH AGM Battery, 25 Amp Charger

#### Optional Accessories

- E81681-00 - Brush, General Scrubbing
- E82850-00 - Brush, Medium Scrubbing
- E82851-00 - Brush, Heavy Duty Scrubbing
- E82852-00 - Brush, Grit Stripping

### Stealth™ DRS32BT Automatic Rider Scrubber

Up to 55,000 sq. ft. / hr.



#### Highest productivity, simple design.

- Innovative design is 4X quieter than other automatic scrubbers on the market
- 1-Touch Intelligent Drive Control System
- Simple operator controls
- Ideal for day cleaning
- Two 16" pad holders included

Length: 62"  
Height: 54"  
Width: 33" w/o squeegee  
Width: 41" w/ squeegee

Item #	Description
E29931-00	w/ 4-6V 235AH Wet Battery, 25 Amp Charger
E29932-00	w/ 4-6V 200AH AGM Battery, 25 Amp Charger

#### Optional Accessories

- E22093-00 - Brush, General Scrubbing
- E89557-00 - Brush, Medium Scrubbing
- E22092-00 - Brush, Heavy Duty Scrubbing
- E22094-00 - Brush, Grit Stripping

## HIGH SPEED BURNISHERS

### Crewman™ 1600 / Crewman™ 2000 20" High Speed Burnishers

Up to 16,000 sq. ft. / hr.



#### Value positioned.

- Fully adjustable handle can be used in floating or locked position
- Rugged durability, heavy duty 1.5 hp motor
- Precision balanced, flexible pad driver offers an even burnish
- Use for dry and restorative burnishing

Pad size: 20"

Item #	Description
E83015-00	Crewman™ 1600 - 20" High Speed Burnisher
E83016-00	Crewman™ 2000 - 20" High Speed Burnisher

### Optima XR Series High Speed Burnishers

Up to 34,000 sq. ft. / hr.



#### Up to 27% more fuel efficient.

- XR (Xtended Run) due to exclusive, high-efficiency fuel delivery system
- Increased gloss with increased pad speed
- Powerful Kawasaki 603cc engine with certified EPA emissions
- Premium cast aluminum deck and heavy-duty components
- Industry leading 3-year warranty

Pad sizes: 21", 27"

Item #	Description
E12800-00	Optima XR - 21" Propane Burnisher
E12830-00	Optima XR - 27" Propane Burnisher
E12850-00	Optima XR - 27" Propane Burnisher w/Dust Control

#### Optional Accessories

- Emission Monitoring System
- Centrifugal Clutch
- Dust Control (27 inch only)



## FLOOR MACHINES

### Crewman™ 17HD / Crewman™ 20HD Standard Floor Machines

Up to 1,100 sq. ft. / hr.



#### Value positioned.

- Precision balancing reduces operator fatigue
- Rugged durability, heavy-duty 1.5 hp motor, triple planetary steel gearbox
- Use for stripping, scrubbing, spray buffing and carpet bonneting

Pad size: 17"  
Pad size: 20"

Item #	Description
E83013-00	Crewman™ 17HD - 17" Standard Floor Machine
E83014-00	Crewman™ 20HD - 20" Standard Floor Machine
Optional Accessories	
<ul style="list-style-type: none"> <li>• E83186-00 - Pad Holder</li> <li>• E87001-00 - Poly Scrub Brush</li> <li>• E87002-00 - Nylon Carpet Brush</li> <li>• E87003-00 - Brush, Grit Stripping</li> <li>• E87004-00 - Brush, Grit Scrubbing</li> <li>• E83187-00 - Solution Tank</li> </ul>	

### Foreman® 20DS 20" Dual Speed Floor Machine

Up to 1,100 sq. ft. / hr.



#### Versatile, select 175 or 330 RPM to strip, scrub or buff.

- Hour meter to manage maintenance and usage
- Durable roto-mold construction, heavy duty 1.5 hp motor, triple planetary steel gearbox
- Use for stripping, scrubbing, spray buffing and carpet bonneting

Pad size: 20"

Item #	Description
E83010-00	Foreman® 20DS - 20" Dual Speed Floor Machine
Optional Accessories	
<ul style="list-style-type: none"> <li>• E83185-00 - Pad Holder</li> <li>• E87012-00 - Poly Scrub Brush</li> <li>• E87013-00 - Nylon Carpet Brush</li> <li>• E87014-00 - Brush, Grit Stripping</li> <li>• E87015-00 - Brush, Grit Scrubbing</li> <li>• E83187-00 - Solution Tank</li> </ul>	

## FLOOR STRIPPERS

### Crewman™ 20 ORB 20" Orbital Strip Machine

Up to 7,000 sq. ft./hr. on Wood Floors  
Up to 2,700 sq. ft./hr. on VCT Floors



#### Safely and effectively strip and prep any floor surface.

- High speed 3,400 RPM orbital motor quickly cuts through the toughest coatings without the use of harsh chemicals
- Cast iron base and optional weight system provide maximum durability
- Optional dust containment system easily connects to any dry vacuum

Length: 22"  
Width: 16"  
Height: 46"

Item #	Description
E12801-00	Crewman™ 20 ORB - 20" Standard Machine
E12806-00	Crewman™ 20 ORB - 20" Machine w/ weights
Optional Accessories	
<ul style="list-style-type: none"> <li>• EP50249 - 20" Dust Containment Kit</li> </ul>	

### Crewman™ 28 ORB 28" Orbital Strip Machine

Up to 10,000 sq. ft./hr. on Wood Floors  
Up to 3,600 sq. ft./hr. on VCT Floors



#### Safely and effectively strip and prep any floor surface.

- High speed 3,400 RPM orbital motor quickly cuts through the toughest coatings without the use of harsh chemicals
- Cast iron base and optional weight system provide maximum durability
- Optional dust containment system easily connects to any dry vacuum

Length: 30"  
Width: 16"  
Height: 46"

Item #	Description
E12811-00	Crewman™ 28 ORB - 28" Machine w/ weights
Optional Accessories	
<ul style="list-style-type: none"> <li>• EP50250 - 28" Dust Containment Kit</li> </ul>	

### Big Bertha® 30" Stripping Machine

Up to 30,000 sq. ft. / hr.



#### Most productive machine for stripping large areas and excessive finish build up.

- Triple counter-rotating brushes easily remove multiple layers of floor finish in a single pass
- Rugged powder coated steel construction for heavy use in tough environments
- Floating shroud contains stripper/prevents splashing

Length: 57"  
Width: 33"  
Height: 43.5"

Item #	Description
E12327-00	Big Bertha® - 30" - Stripping Machine

### Lil Bertha® 24" Stripping Machine

Up to 24,000 sq. ft. / hr.



#### Most productive machine for stripping large areas and excessive finish build up.

- Triple counter-rotating brushes easily remove multiple layers of floor finish in a single pass
- Rugged powder coated steel construction for heavy use in tough environments
- Floating shroud contains stripper/prevents splashing

Length: 54"  
Width: 27"  
Height: 43.5"

Item #	Description
E88398-00	Lil Bertha® - 24" Stripping Machine



## CONCRETE & TERRAZZO POLISHERS

### Crete Rx™ CM30

Concrete / Terrazzo Maintenance Machine

Up to 3,375 sq. ft. / hr.

Item #	Description
E29805-00	Crete Rx™ CM30 - Maintenance Machine



**Quick, affordable concrete maintenance.**

- Propane power with planetary drive performs Crete Rx™ honing and polishing with ease
- Smaller footprint with aggressive, high-speed RPM
- All steel construction with EPA/CARB certified engine

Length: 79  
Width: 32  
Height: 46

## WET / DRY VACUUMS

### Workman® 20

Wet / Dry Vacuum

Up to 8,000 sq. ft. / hr.

Item #	Description
E83012-00	Workman® 20 - Wet / Dry Vacuum



**Innovative "tip and pour" design makes emptying easy, large 20 gallon capacity.**

- Powerful 1.75 hp motor offers maximum recovery in wet and dry applications
- Multi task tool kit included, optional front mount squeegee available
- Use for all types of wet or dry vacuuming on hard floor and carpet

Width: 20.5" w/o squeegee  
Width: 29" w/ squeegee  
Height: 39.75"

#### Optional Accessories

- E83011-00 - Front Mount Squeegee
- E83594-00 - HEPA Filter

## DRY VACUUMS

### PowerUP 14

Upright Vacuum

Up to 3,300 sq. ft. / hr.

Item #	Description
E29990-00	PowerUP 14 - Upright Vacuum



**Powerful dual motor system optimizes cleaning, includes onboard tool kit with telescoping wand.**

- Standard HEPA filter, filters out 99.97% of contaminants at 3 microns
- Expanded wheel base and locking foot pedal to maximize stability
- Use for carpet, blinds and upholstery vacuuming

Length: 8" Base  
Width: 14"  
Height: 46" handle upright  
Height: 6" handle lowered

### Bac Pac Lite

5 Liter Backpack Vacuum

7,500 sq. ft. / hr. on Floors  
2,900 sq. ft. / hr. on Stairways  
2,200 sq. ft. / hr. on Partitions

Item #	Description
E85903-00	Bac Pac Lite - 5 Liter Backpack Vacuum



**Lightweight ergonomic design helps prevent operator fatigue.**

- Less than 70 dB sound level, ideal for use in occupied spaces
- Use for residential, commercial carpet, office partitions, blinds, draperies, vent and duct cleaning

Height: 22.5"

**CARPET MACHINES**

**FiberPRO® 8**  
Self Contained Carpet Extractor

Up to 2,000 sq. ft. / hr.

Item #	Description
E87304-00	FiberPRO® 8 - Self Contained Carpet Extractor



**Deep cleans all types of carpets in a single pass maximizing productivity.**

- Preferred method of cleaning, uses less chemical and allows carpets to dry in less than 24 hours
- Unique roller support bar evenly balances machine helping reduce operator fatigue

Length: 41"  
Width: 17.5"  
Height: 34"

**FiberPRO® 20**  
Self Contained Carpet Extractor

Up to 8,000 sq. ft. / hr.

Item #	Description
E87303-00	FiberPRO® 20 - Self Contained Carpet Extractor



**Deep cleans all types of carpets in a single pass maximizing productivity.**

- Self propelled, variable speed; multiple brush settings
- Floating vacuum shoe provides high water recovery reducing dry times
- Large 20 gallon capacity for cleaning large areas

Length: 49"  
Width: 22"  
Height: 41"

**Optional Accessories**

- E85516-00 - 20' Vac & Solution Hose Assembly
- E85519-00 - Stainless Steel Carpet Wand
- E85523-00 - 3" Hand Tool

**FiberPRO® Carpet Spotter**  
Carpet Spotter

Item #	Description
E88049-00	FiberPRO® Carpet Spotter



**Effectively removes spots and soils from carpeting and upholstery.**

- Retractable handle and wide wheel base make transport easy
- Optional floor wand available for cleaning stairs and larger areas

Length: 21"  
Width: 13"  
Height: 23"

**Optional Accessories**

- E85524-00 - Stainless Steel Carpet Wand

**FiberPRO® Air Mover**  
Floor Dryer

Item #	Description
E89968-00	FiberPRO® Air Mover - Floor Dryer



**Powerful 1500 RPM airflow accelerates dry times.**

- Rugged roto-mold construction, 3 speed settings
- Stackable design for increased airflow and easy storage
- Extend reach and increase air flow with daisy-chain multi-unit capability
- Three operating positions: 0°, 45° and 90°

Length: 15"  
Width: 15"  
Height: 15"

Products	Page
<b>AC114</b> Multi-Purpose Acid Cleaner • Delimer.....	22
<b>AF315</b> Disinfectant • Deodorant • Cleaner.....	27
<b>AF79</b> Disinfectant, Cleaner, Fungicide, Mildewstat, Virucide, Deodorizer.....	25
<b>AF79 CONCENTRATE</b> Acid Free Cleaner • Disinfectant Fungicidal • Virucidal.....	25
<b>ALCOHOL FREE FOAMING HAND SANITIZER</b> Freshly Scented, Foaming.....	50
<b>ALCOHOL FOAMING HAND SANITIZER</b> Ethanol Based Foaming.....	50
<b>ALCOHOL GEL SANITIZER</b> Ethanol Based.....	50
<b>ANTIBACTERIAL LOTION SKIN CLEANSER</b> Pearlized Cleanser with PCMX.....	50
<b>ANTI-SPLASH URINAL SCREEN</b> 100% Recyclable.....	26
<b>APPLICATOR REFILL PADS</b> 18" or 24".....	16
<b>AX-IT® AEROSOL</b> Baseboard Cleaner and Stripper.....	8
<b>AX-IT® PLUS</b> Very Aggressive No-Rinse Floor Stripper.....	8
<b>BARRIER FLUID</b> Oil-based Malodor Blocking Liquid.....	26
<b>BEST BET™</b> Liquid Creme Cleanser.....	25
<b>BEST SCENT</b> Air Fresheners.....	29
<b>BEST SCRUB</b> Top Scrub Floor Cleaner.....	10
<b>BETCO EXPRESS® with SRT</b> Fast Drying - Fast Curing Floor Finish.....	5
<b>BETCOBEST® LM HIGH BUILD FLOOR FINISH</b> with MMT/50™ Technology.....	6
<b>BETCO® BRITE MSP</b> Multi-Surface Polish • Protectant.....	20
<b>BETCO® ONE STEP</b> High Speed Cleaner • Restorer.....	10
<b>BOL MAID®</b> Porcelain Toilet Bowl Cleaner.....	24
<b>BTB</b> Mildew Stain Remover • Bathroom Cleaner.....	25
<b>CIDE-BET II</b> Antibacterial, Bactericidal, Virucidal, Fungicidal...	28
<b>CITRUFUAM</b> All Purpose Cleaner • Degreaser.....	18
<b>CITRUS CHISEL</b> Natural Citrus Cleaner Degreaser.....	21, 32
<b>CITRUS KITCHEN DEGREASER</b> Citrus Cleaner Degreaser.....	33
<b>CITRUSOLV™ 40</b> Heavy-Duty Solvent Degreaser.....	23
<b>CITRUSOLV™ CONCENTRATE</b> Natural Degreaser • Deodorant.....	23

Products	Page
<b>CITRUSOLV™ HF</b> High Flash Solvent Degreaser.....	23
<b>CITRUSOLV™ WR</b> Water Rinsable Degreaser.....	23
<b>CITRUSPRAY™</b> Foaming Degreaser.....	21
<b>CLARIO® MANUAL DISPENSERS</b> Foaming and Lotion Dispensers.....	51
<b>CLARIO® TOUCH FREE DISPENSERS</b> Foaming and Lotion Dispensers.....	52
<b>CLARIO® TOUCH FREE BLACK FLOOR STAND</b> For use with Touch Free Dispensers.....	52
<b>CLEAR IMAGE</b> Glass and Surface Cleaner.....	19
<b>CLEAR IMAGE AEROSOL</b> Glass and Surface Cleaner.....	19
<b>CLEAR IMAGE CONCENTRATE</b> Glass and Surface Cleaner.....	19
<b>CRETE RX™ CLEANING &amp; BURNISHING PADS</b> For Use with CreteRx.....	11
<b>CRETE RX™ CONCRETE STAIN REMOVAL KIT</b> For Use with CreteRx.....	12
<b>CRETE RX™ DENSICLEAN®</b> Polished Concrete Cleaner.....	9
<b>CRETE RX™ DENSIFIER</b> CreteRx RTU Densifying Compound.....	11
<b>CRETE RX™ HONING TOOL</b> For Use with CreteRx.....	12
<b>CRETE RX™ LIQUIGRIND</b> Ready To Use Honing Compound.....	11
<b>CRETE RX™ LIQUISHIELD</b> Concrete Guard.....	11
<b>CRETE RX™ LIQUISTRIP</b> Concentrated Stripper for Permanent Coatings...	11
<b>CRETE RX™ POLISHING TOOL</b> For Use with CreteRx.....	12
<b>CRETE RX™ RESET TOOL</b> For Use with CreteRx.....	12
<b>CRETE RX™ STAIN DEFENSE</b> CreteRx Ready to Use Penetrating Sealer.....	11
<b>CRETE RX™ TOOL HOLDER</b> For Use with CreteRx.....	12
<b>COUNTER ROTATING PLATE (CRP)</b> For Use with CreteRx.....	12
<b>CTW501</b> Car and Truck Wash.....	22
<b>DAILY DISINFECTANT DUAL</b> Disinfectant/Detergent/Deodorant.....	27
<b>DAILY SCRUB SC</b> Floor Cleaner.....	10
<b>DEEP BLUE</b> Glass and Surface Cleaner.....	19
<b>DEEP BLUE AEROSOL</b> Glass and Surface Cleaner.....	20
<b>DEEP BLUE CONCENTRATE</b> Glass and Surface Cleaner.....	19
<b>DEEP BLUE CONCENTRATE 1:20</b> Glass and Surface Cleaner.....	20

Products	Page
<b>DM120</b> Dust Mop Treatment.....	16
<b>DRAIN STATION</b> Drain Maintenance Pump.....	37
<b>DRAIN &amp; TRAP TREATMENT</b> Cleaner and Maintainer.....	34
<b>DRAIN TREATMENT NEEM</b> Drain Treatment for Beverage Machines.....	34
<b>DRIP TRAY</b> For use with Clario Dispensers.....	52
<b>DUMPSTER SPRAY SYSTEM</b> Automatic Dumpster Spray System.....	37
<b>DUMPSTER TREATMENT</b> Dumpster Cleaner and Odor Eliminator.....	34
<b>DUST MOP TREATMENT AEROSOL</b> Water-Based Dust Mop Treatment.....	16
<b>E2 ANTIBACTERIAL FOAMING SKIN CLEANSER</b> For Food Service Applications.....	49
<b>E3 ALCOHOL FREE FOAMING SANITIZER</b> Fast Drying Moisturizing.....	50
<b>EASY TASK™</b> Thermoplastic Spray Buff.....	10
<b>EMULSINATOR</b> Aggressive No-Rinse Stripper.....	8
<b>EMULSION PRO+</b> Oil and Water Wood Floor Finish and Sealer.....	15
<b>EXTREME®</b> Low Odor No-Rinse Floor Stripper.....	7
<b>EXTREME® ULTRA</b> Ultra Concentrated Low Odor Floor Stripper.....	8
<b>FACTORY FORMULA™ HP</b> Cleaner • Degreaser Concentrate.....	21
<b>FASTDOSE™</b> Chemical Management.....	44
<b>FASTDRAW® 1</b> Chemical Management.....	44
<b>FASTDRAW® FOAMER II</b> Chemical Management.....	44
<b>FASTDRAW® FREEDOM</b> Chemical Management.....	44
<b>FASTDRAW® PRO</b> Chemical Management.....	44
<b>FASTPAK®</b> Mobile Dilution Control Kit.....	45
<b>FIBERCAP™ MP</b> Multi-Purpose Encapsulation Cleaner.....	14
<b>FIBERPRO® ALKALINE CONDITIONER</b> pH Neutralizer Treatment.....	13
<b>FIBERPRO® BONBET™</b> Bonnet Shampoo.....	14
<b>FIBERPRO® ENZYME DEODORIZER</b> Organic Stain Remover and Deodorizer.....	13
<b>FIBERPRO® ES-STEAM™</b> Extraction Cleaner.....	14
<b>FIBERPRO® EXTRACTION CLEANER</b> 5th Generation Extraction Cleaner.....	14
<b>FIBERPRO® FOAM CONTROL</b> Liquid Defoamer.....	14

Products	Page
<b>FIBERPRO® GUM REMOVER</b> Gum Remover.....	13
<b>FIBERPRO® P • O • G</b> Paint, Oil and Grease Remover.....	13
<b>FIBERPRO® RED 'N' BROWN OUT</b> Red Stain • Tannin Debrowner Treatment.....	13
<b>FIBERPRO® SPOT BET</b> All Purpose Spot and Stain Remover.....	13
<b>FIBERPRO® TLC</b> Traffic Lane Cleaner.....	14
<b>FIGHT-BAC™ RTU</b> Disinfectant • Deodorizer • Cleaner.....	28
<b>FINISH 101™</b> Acrylic Polymer Floor Finish.....	6
<b>FLAT TOP GALLON DISPENSER PUMP &amp; WALL BRACKET</b> For Flat Top Gallon Dispensers.....	52
<b>FLATWARE PRESOAK</b> Concentrated Liquid Presoak & Brightener.....	36
<b>FLOOR SEALER</b> Metal Interlocked Acrylic Polymer Floor Sealer.....	7
<b>FOAM GUN</b> Foam Gun for Dumpster Treatment.....	37
<b>FOAMING ANTIBACTERIAL SKIN CLEANSER</b> Vitamin E Enriched.....	49
<b>FOAMING HAND, HAIR AND BODY SHAMPOO</b> Vitamin E Enriched.....	51
<b>FOREST 5</b> Foaming RTU Cleaner • Disinfectant.....	25
<b>FORTIFY™ FOAM CONTROL</b> Concentrated Solid Antifoam Puck.....	45
<b>GARBAGE DISPOSAL CLEANER</b> Foaming Probiotic Cleaner and Freshener.....	34
<b>GAME TIME CLEANER</b> Maintenance Cleaner for Wood Floors.....	15
<b>GE FIGHT-BAC™ RTU</b> Disinfectant • Cleaner • Virucide • Fungicide.....	28
<b>GE FIGHT-BAC™ RTU WIPES</b> Disinfectant • Cleaner • Virucide • Fungicide.....	28
<b>GERALDINE®</b> Nonammoniated Finish Wax and Finish Stripper... 8	
<b>GLARE®</b> Metal Interlocked Acrylic Polymer Floor Finish... 6	
<b>GLYBET™ III</b> Disinfectant • Deodorant.....	28
<b>GRAFFITI REMOVER</b> Gel Formula.....	20
<b>GREASE SOLV</b> Probiotic Degreaser.....	22
<b>GREEN EARTH® CITRUS CARPET SPOTTER</b> Natural Gum and Grease Remover.....	13
<b>GREEN EARTH® CLEAR FOAMING SKIN CLEANSER</b> Dye Free and Fragrance Free.....	49
<b>GREEN EARTH® DAILY FLOOR CLEANER</b> Neutral pH Low Foaming.....	9
<b>GREEN EARTH® FLOOR FINISH</b> Non-Zinc Floor Finish and Sealer.....	7
<b>GREEN EARTH® FLOOR STRIPPER</b> Non-Butyl • Non-Ammoniated.....	8

Products	Page
<b>GREEN EARTH® FOAMING SKIN CLEANSER</b> Luxurious with Emollients.....	49
<b>GREEN EARTH® GLASS CLEANER</b> Streak Free Glass and Surface.....	19
<b>GREEN EARTH® LOTION SKIN CLEANSER</b> Moisturizing Lotion.....	49
<b>GREEN EARTH® NATURAL ALL PURPOSE CLEANER</b> Hard Surface Cleaner.....	19
<b>GREEN EARTH® NATURAL DEGREASER</b> Hard Surface Degreaser.....	21
<b>GREEN EARTH® PEROXIDE CLEANER</b> Concentrated All Purpose Cleaner.....	18
<b>GREEN EARTH® RESTROOM CLEANER</b> Concentrated • Non Corrosive • Heavy Duty.....	25
<b>GREEN EARTH® RTU PEROXIDE CLEANER</b> Ready-To-Use • Multi-Purpose.....	18
<b>GREEN EARTH® RTU RESTROOM CLEANER</b> Ready-To-Use • Non-Corrosive • Heavy Duty.....	24
<b>GREEN EARTH® VELOCITY®</b> Non-Butyl Degreaser.....	21
<b>GYMSHOE®</b> Two Component Waterbased Sport Floor Finish... 15	
<b>HARD AS NAILS®</b> Black Mark Resistant Metal Interlocked Finish... 5	
<b>HEAVY WEIGHT BAR</b> 18" / 24".....	16
<b>HD HIGH FOAM CHLORINATED DEGREASER</b> High Foaming Degreaser.....	33
<b>HD LOW FOAM CIP CHLORINATED DEGREASER</b> Low Foaming Degreaser.....	33
<b>HD ORANGE HAND CLEANER</b> Heavy Duty with Citrus and Fine Pumice.....	51
<b>HIGH FLOW PROPORTIONER</b> Industrial Proportioner for Auto Scrubbers.....	23
<b>HI-TECH®</b> Metal Interlocked RTU Finish.....	6
<b>HYBRID®</b> Optically Energized Extended Wear Floor Finish... 5	
<b>I.F.T.</b> Intensive Floor Treatment.....	16
<b>INSULATOR™</b> Static Dissipative Floor Finish.....	6
<b>KITCHEN DEGREASER</b> Cleaner and Degreaser.....	33
<b>KLING™</b> Thickened Acid Toilet Bowl and Urinal Cleaner... 24	
<b>LEMON FURNITURE POLISH</b> Natural Lemon Oil.....	20
<b>LIQUID CHISEL® MAX</b> Ultra Strength Non-Butyl Degreaser.....	22
<b>LOTION HAND, HAIR AND BODY SHAMPOO</b> Pleasantly Scented.....	51
<b>MAD</b> Mild Acid Detergent.....	33
<b>NEVER B4</b> Vehicle Cleaner • Pressure Washer Cleaner.....	22
<b>NO-RINSE FLOOR CLEANER</b> Continuous Floor Treatment.....	32

Products	Page
<b>ODOR CONTROL METERED AEROSOLS</b> For Use with Metered Aerosol Dispenser.....	29
<b>ODOR CONTROL METERED AEROSOL DISPENSER</b> For Use with Metered Aerosols.....	29
<b>OVEN/FRYER/GRILL CLEANER</b> Ready To Use.....	34
<b>OVEN AND GRILL CLEANER AEROSOL</b> Gel Formulation • Fast Acting Lemon Fragrance... 32	
<b>OVEN JELL</b> Oven • Grill and Rangoon Cleaner.....	32
<b>PEARLIZED WHITE LOTION SKIN CLEANSER</b> Cleanser with Emollients.....	50
<b>PINE QUAT</b> Disinfectant, Deodorant, Detergent.....	28
<b>PINK FOAMING SKIN CLEANSER</b> Luxury Foaming.....	49
<b>PINK LOTION SKIN CLEANSER</b> Pearlized with Emollients.....	50
<b>pH7</b> Daily Floor Cleaner.....	10
<b>pH7 DUAL</b> Neutral pH Disinfectant, Detergent, Deodorant... 27	
<b>pH7 ULTRA</b> Daily Floor Cleaner.....	10
<b>pH7Q</b> Neutral pH Disinfectant, Detergent, Deodorant... 27	
<b>pHPERFECT</b> Ice Melt Remover Floor Conditioner.....	10
<b>PHOTON™ MAX with SRT</b> High Gloss Remarkable Response Floor Finish... 6	
<b>PLAYER'S CHOICE™ ONE</b> Clear Waterbased Sport Floor Finish.....	15
<b>PRODUCT SELECTION GUIDE</b> Chemical Management.....	46 - 47
<b>PULL®</b> Toilet Bowl • Urinal Cleaner.....	24
<b>PUSH®</b> Drain Maintainer • Floor Cleaner • Spotter.....	18
<b>QUARTERPACK</b> Chemical Management.....	45
<b>QUAT-STAT™ 5</b> One-Step Disinfectant • Cleaner.....	27
<b>QUICKCOAT®</b> Finish Applicator System.....	7
<b>RECOVER</b> LVT / Multi-Surface Stripper.....	9
<b>REINFORCE</b> Daily Cleaner and Protectant.....	9
<b>REST STOP™</b> Virucidal, RTU Germicide, Cleaner, Disinfectant... 25	
<b>RESCUE GLOSS</b> LVT / Multi-Surface Floor Finish.....	7
<b>RESCUE TRUMATTE</b> LVT / Multi-Surface Floor Finish.....	7
<b>SANIBET™ RTU</b> Cleaner • Sanitizer • Deodorizer.....	32
<b>SENTEC®</b> Odor Eliminator Technology.....	29

Products	Page
<b>SENTEC® METERED AEROSOLS</b> For Use with Odor Control Dispenser.....	29
<b>SMARTSCREEN®</b> Urinal Screen with built in Pucks.....	26
<b>SOLICHEM™ COMBO PACK - GREASE SOLV</b> Solid Industrial Degreaser & Fortify™ Foam Control... ..	45
<b>SOLICHEM™ COMBO PACK - pH7 Ultra</b> Solid Neutral Floor Cleaner & Fortify™ Foam Control... ..	45
<b>SOLICHEM™ GREASE SOLV</b> Solid Industrial Degreaser .....	45
<b>SOLICHEM™ pH7 Ultra</b> Solid Neutral Floor Cleaner .....	45
<b>SPECTACULOSO</b> Lavender Multi-Purpose Cleaner.....	18
<b>SPEEDEX CONCENTRATE</b> Cleaner • Degreaser .....	21
<b>SPEEDEX</b> Ready-To-Use Cleaner • Degreaser.....	21
<b>SPRAY AND FOAM DISPENSER</b> Meat Room Dispenser.....	37
<b>SPRAY FOAM</b> Heavy Duty Foaming Degreaser .....	33
<b>SPRAY FOAM ULTRA</b> Heavy Duty Foaming Degreaser .....	33
<b>SQUEAKY™ FLOOR CLEANER</b> Maintenance Cleaner for Wood Floors.....	15
<b>STAINLESS STEEL CLEANER • POLISH AEROSOL</b> Streak Free • Ready-To-Use .....	20
<b>STG CLEANER</b> Daily Cleaner and Protectant.....	9
<b>STG PENETRATING SEALER</b> Stone, Tile, and Grout .....	9
<b>STIX™</b> Toilet Bowl • Porcelain Cleaner .....	24
<b>STREETSHOE® NXT</b> Waterbased High Traffic Wood Floor Finish.....	15
<b>SUPER KEMITE®</b> Heavy Duty Cleaner • Degreaser.....	22
<b>SURE BET™ II</b> Foaming Shower Restroom Cleaner.....	24
<b>SURE CURE™</b> Acrylic/Urethane Sealer .....	7
<b>SYMPPLICITY™ ALL TEMP MACHINE DETERGENT</b> Concentrated All Temperature.....	35
<b>SYMPPLICITY™ ALL TEMP RINSE AID</b> Concentrated Liquid Rinse Aid .....	35
<b>SYMPPLICITY™ BETCO® BAR GLASS DETERGENT</b> Low Foam .....	37
<b>SYMPPLICITY™ BLAZE MACHINE DETERGENT</b> Machine Detergent Concentrate .....	34
<b>SYMPPLICITY™ BLAZE NP MACHINE DETERGENT</b> Non Phosphate Machine Detergent .....	35
<b>SYMPPLICITY™ BREAK</b> Alkaline Builder .....	39
<b>SYMPPLICITY™ BREAK ULTRA</b> Super Concentrated Laundry Break .....	39
<b>SYMPPLICITY™ BUILT DETERGENT</b> Ultra High Performance .....	39

Products	Page
<b>SYMPPLICITY™ CHLORINATED MACHINE DETERGENT</b> Stain Fighting Detergent .....	36
<b>SYMPPLICITY™ CITRUSUDS</b> Dish & Pan Detergent .....	31
<b>SYMPPLICITY™ COLOR SAFE DESTAINER</b> Color Safe Destainer .....	40
<b>SYMPPLICITY™ DESTAINER</b> Laundry Bleach .....	40
<b>SYMPPLICITY™ DETERGENT</b> High Performance Detergent .....	39
<b>SYMPPLICITY™ DETERGENT ULTRA</b> Super-Concentrated Laundry Detergent .....	39
<b>SYMPPLICITY™ DUET-OPL</b> Detergent with Enzymes .....	40
<b>SYMPPLICITY™ DUET-L</b> Liquid Detergent with Bleach Alternative.....	40
<b>SYMPPLICITY™ DUET-S</b> Detergent with Color Safe Bleach .....	40
<b>SYMPPLICITY™ DYE FREE FRAGRANCE FREE DETERGENT</b> High Performance Detergent .....	40
<b>SYMPPLICITY™ EMULSIFIER</b> Emulsifying Detergent.....	39
<b>SYMPPLICITY™ ENVY</b> Super-Concentrated Laundry Detergent .....	31
<b>SYMPPLICITY™ FRESH SUDS</b> Super-Concentrated Laundry Detergent .....	31
<b>SYMPPLICITY™ GREEN EARTH MACHINE DETERGENT</b> Machine Detergent Concentrate .....	35
<b>SYMPPLICITY™ GREEN EARTH POT &amp; PAN DETERGENT</b> Premium 100% Active Detergent.....	31
<b>SYMPPLICITY™ HIGH TEMP RINSE AID</b> Concentrated Liquid Rinse Aid .....	35
<b>SYMPPLICITY™ KRYSTAL SOLID RINSE AID</b> Solid Machine Rinse Aid .....	35
<b>SYMPPLICITY™ IN-SYNC</b> Premium Pot & Pan Detergent.....	31
<b>SYMPPLICITY™ LOW TEMP MACHINE SANITIZER</b> Machine Sanitizer.....	36
<b>SYMPPLICITY™ L-S-R DELIMER</b> Dish Machine Descaler .....	37
<b>SYMPPLICITY™ MACHINE RINSE AID</b> Dish Machine Rinse Aid .....	35
<b>SYMPPLICITY™ METAL SAFE DETERGENT</b> Concentrated All Temp Machine .....	35
<b>SYMPPLICITY™ OXY DESTAINER POWDER</b> Oxygen Stain Remover .....	36
<b>SYMPPLICITY™ PINNACLE PRESOAK</b> Solid Pre-Soak & Detarnisher.....	36
<b>SYMPPLICITY™ PRO A</b> for Organic Stains .....	42
<b>SYMPPLICITY™ PRO G</b> for Healthcare Related Stains.....	42
<b>SYMPPLICITY™ PRO R</b> for Rust and Metallic Stains .....	42
<b>SYMPPLICITY™ PRO S</b> for Inorganic Stains .....	42
<b>SYMPPLICITY™ RECLAIM C</b> for Colored Linens .....	42

Products	Page
<b>SYMPPLICITY™ RECLAIM R</b> for Rust .....	42
<b>SYMPPLICITY™ RECLAIM W</b> for White Linens .....	42
<b>SYMPPLICITY™ SANIBET™ MULTI-RANGE</b> Sanitizer • Disinfectant • Deodorizer.....	32
<b>SYMPPLICITY™ SANITIZING SOFTENER 550</b> Softener Sanitizer.....	41
<b>SYMPPLICITY™ SINK STATION</b> Three Compartment Sink Dispenser.....	37
<b>SYMPPLICITY™ SOFTENER</b> Fabric Softener.....	41
<b>SYMPPLICITY™ SOUR</b> Laundry Neutralizer.....	41
<b>SYMPPLICITY™ SOUR &amp; SOFTENER</b> Neutralizer and Fabric Softener.....	41
<b>SYMPPLICITY™ SOUR ULTRA</b> Super-Concentrated Laundry Sour .....	41
<b>SYMPPLICITY™ TDS RINSE AID</b> Concentrated Liquid Rinse Aid .....	36
<b>SYMPPLICITY™ TILLY</b> Hand Dishwashing Detergent .....	31
<b>TILE CLEAN</b> Deep Cleansing Hard Tile Cleaner .....	9
<b>TOOL ADAPTOR PAD (TAP)</b> For Use with CreteRx .....	12
<b>TOP FLITE™</b> All Purpose Cleaner Concentrate .....	18
<b>TOP FLITE™ PLUS</b> All Purpose Cleaner.....	18
<b>TOTE/TANK/DRUM PROPORTIONER</b> .....	23
<b>TRIFORCE</b> Disinfectant • Bactericidal • Fungicidal .....	27
<b>TRITON® HD 2 L DISPENSER</b> Dispenser for 2 Liter Triton Bottles .....	52
<b>TRITON® HD 4 L DISPENSER</b> Dispenser for 4 Liter Triton Bottles .....	52
<b>TYKOTE</b> Wood Floor Bonding Agent .....	16
<b>ULTRABLUE™</b> Antibacterial Foaming Skin Cleanser .....	49
<b>ULTRA 2000™</b> Super Double Strength Degreaser .....	22
<b>UNLOCK™</b> No-Rinse Floor Stripper.....	8
<b>UNTOUCHABLE™ with SRT</b> Black Mark Resistant Metal Interlocked Finish .....	6
<b>URINAL PUCK BLUE DSL</b> Probiotic Urinal Puck.....	26
<b>VERSIFECT™</b> Disinfectant, Virucide, Cleaner and Deodorizer ..	27
<b>WILD BERRY MALODOR COUNTERACTANT</b> Powdered Portable Toilet .....	26
<b>XHD HAND CLEANER</b> Extra Heavy Duty with Soy and Walnut .....	51

**Automatic Scrubbers** **Page**

<b>CREWMAN™ AS20B</b> 20" Automatic Scrubber w/ Brush Assist . . . . .	55
<b>GENESYS™ 20D</b> 20" Automatic Scrubber w/ Pad Assist . . . . .	54
<b>GENESYS™ 20DT</b> 20" Automatic Scrubber w/ Transaxle Drive . . . . .	54
<b>GENESYS™ 20ORB</b> 20" Orbital w/ Traction Drive . . . . .	54
<b>GENESYS™ 26D</b> 26" Disk Auto Scrubber . . . . .	55
<b>GENESYS™ 28D</b> 28" Disk Auto Scrubber . . . . .	55
<b>GENESYS™ 32D</b> 32" Disk Auto Scrubber . . . . .	55
<b>GENESYS™ 28ORB</b> 28" Orbital Scrubber . . . . .	55
<b>STEALTH™ DRS21BT</b> MicroRiding Scrubber . . . . .	56
<b>STEALTH™ DRS26BT</b> Automatic Rider Scrubber . . . . .	56
<b>STEALTH™ DRS32BT</b> Automatic Rider Scrubber . . . . .	56

**Burnishers** **Page**

<b>CREWMAN™ 1600</b> 20" High Speed Burnisher . . . . .	56
<b>CREWMAN™ 2000</b> 20" High Speed Burnisher . . . . .	56
<b>OPTIMA XR SERIES</b> High Speed Burnishers . . . . .	56

**Carpet Machines** **Page**

<b>FIBERPRO® 8</b> Self Contained Carpet Extractor . . . . .	59
<b>FIBERPRO® 20</b> Self Contained Carpet Extractor . . . . .	59
<b>FIBERPRO® CARPET SPOTTER</b> Carpet Spotter . . . . .	59
<b>FIBERPRO® AIR MOVER</b> Floor Dryer . . . . .	59

**Concrete & Terrazzo Polishers** **Page**

<b>CRETE RX™ CM30</b> Concrete / Terrazzo Maintenance Machine . . . . .	58
--	----

**Dry Vacuums** **Page**

<b>BAC PAC LITE</b> 5 Liter Bac Pac Vacuum . . . . .	58
<b>POWERUP 14</b> Upright Vacuum . . . . .	58

**Floor Machines** **Page**

<b>CREWMAN™ 17HD</b> Standard Floor Machine . . . . .	57
<b>CREWMAN™ 20HD</b> Standard Floor Machine . . . . .	57
<b>FOREMAN® 20DS</b> Dual Speed Floor Machine . . . . .	57

**Floor Strippers** **Page**

<b>BIG BERTHA®</b> 30" Stripping Machine . . . . .	57
<b>CREWMAN™ 20 ORB</b> 20" Orbital Strip Machine . . . . .	57
<b>CREWMAN™ 28 ORB</b> 28" Orbital Strip Machine . . . . .	57
<b>LIL BERTHA®</b> 24" Stripping Machine . . . . .	57

**Small Area Autoscrubbers** **Page**

<b>GENESYS™ 15</b> 15" Cylindrical Automatic Scrubber . . . . .	54
<b>GENIE® B</b> All Purpose Automatic Scrubber . . . . .	54
<b>MOTOMOP®</b> Small Area Cleaning Machine . . . . .	54

**Wet/Dry Vacuums** **Page**

<b>WORKMAN® 20</b> Wet / Dry Vacuum . . . . .	58
--	----

**Contents**

<i>Floor Care</i> .....	4 - 6
<i>General Cleaning</i> .....	7 - 29
<i>Food Service / Warewash</i> .....	30 - 37
<i>Laundry</i> .....	38 - 42
<i>Dilution Control</i> .....	43 - 47
<i>Hand Hygiene</i> .....	48 - 52
<i>Equipment</i> .....	53 - 59
<i>Product Index</i> .....	60 - 64





888-GO BETCO | [betco.com](http://betco.com)

©2023 Betco Corporation  
All Rights Reserved.  
400 Van Camp Road  
Bowling Green, Ohio 43402  
Item #90211-92



10/2023