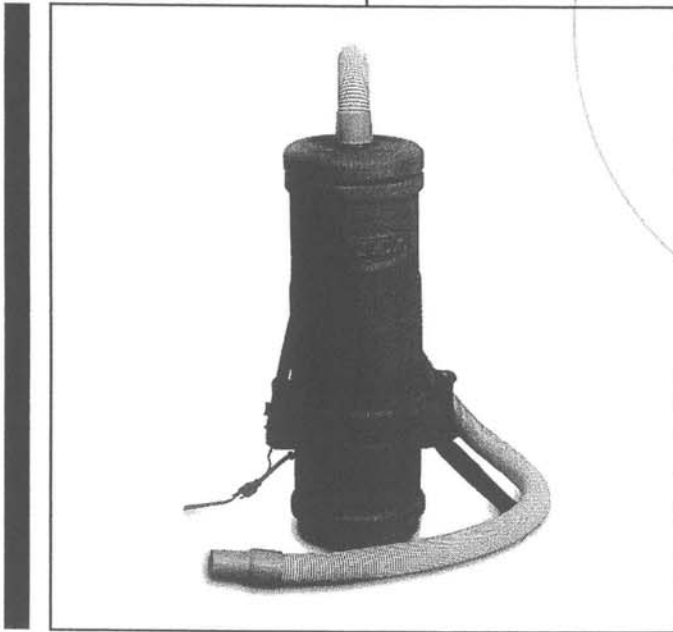


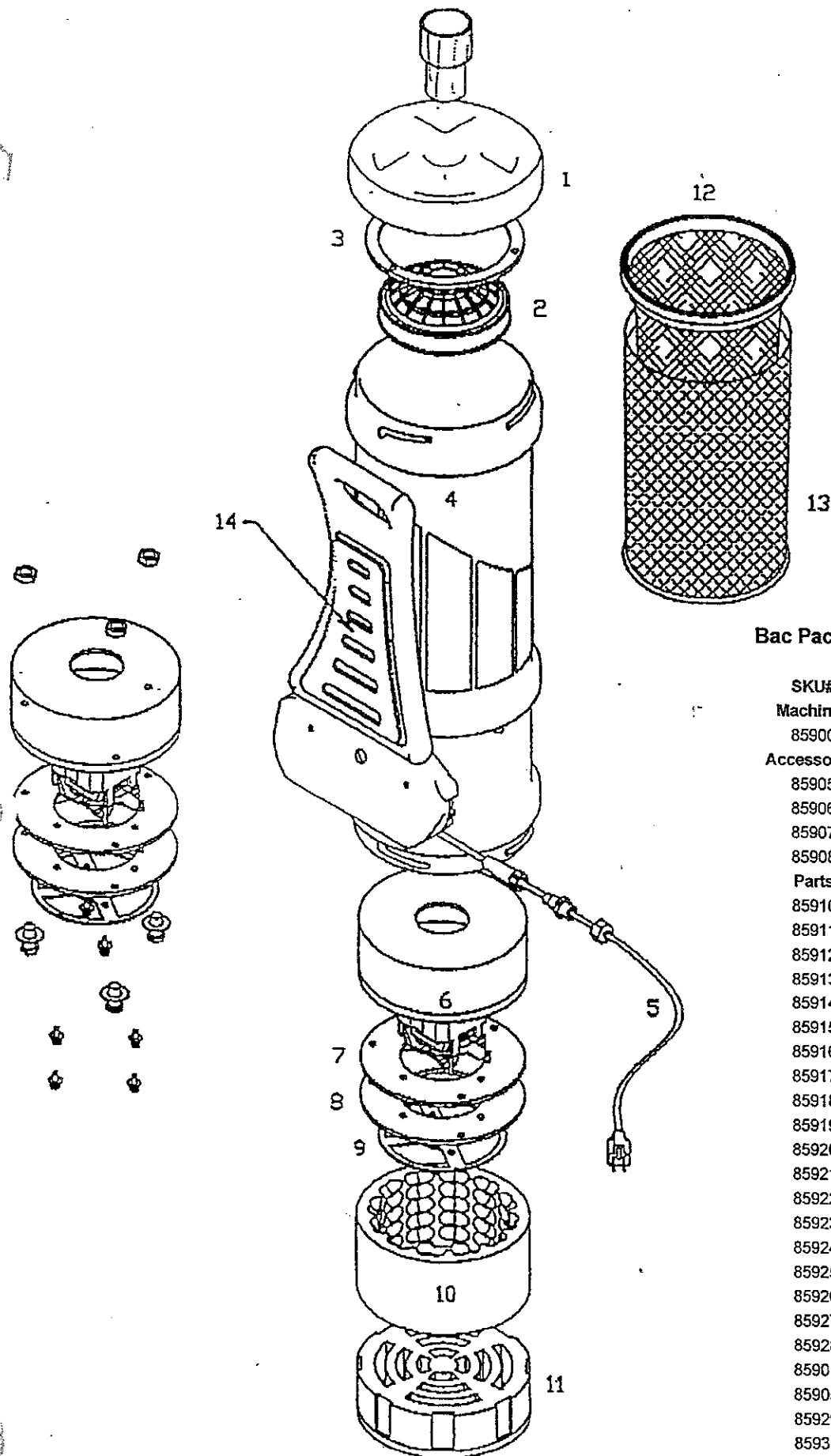
Bac Pac 10 Quart Bac Pac Vacuum

Parts Schematic

Item #85900



Better Resources. Better Results.
BETCO®



Bac Pac Parts Schematic

SKU#	RE#	Description
Machines		
85900		Bac Pac W/ 5" Hose
Accessories		
85905		Dry Filter Bag
85906		Paper Filter Bags (10/Pkg)
85907		5' Smooth Bore Hose
85908		50' Safety Orange Power Cord
Parts		
85910	1	Threaded Cap
85911	2	Vacuum Motor Dome
85912	2a	Hepa Dome Filter
85913	3	Motor Mounting Ring
85914	4	Ergonomic Vacuum Body
85915	5	18" Electric Cord
85916	5a	Pig Tail Strain Relief
85917	5b	Pig Tail Strain Relief Nut
85918	6	Vacuum Motor Dome
85919	6a	Motor Bolts (3)
85920	6b	Washers (10)
85921	6c	Nylock Nuts (3)
85922	7	Vacuum Gasket
85923	8	Vacuum Mounting Plate
85924	8a	3/4" Self Tapping Screw
85925	9	Dual Cell Deflector Plate
85926	9a	1/2" Self Tapping Screws
85927	10	Sound Absorbing Foam
85928	11	Dual Cell Noise Filter
85901	12	Paper Filter Bag (10/Pkg)
85905	13	Cloth Filter & Gasket
85929	14	Cushioned Back Pad
85930	15	Belt & Shoulder Harness
85931	15a	Belt Allen Screws
85932	15b	Belt Washers
85933	16	Spade Female Insulated 14
85934	17	Spade Terminal Insulated 14
85935	18	Ring Terminal 3/16 ID
85936	19	Switch On/Off

Bac Pac 10 Quart Bac Pac Vacuum

Operator's Manual

Item #85900



INTRODUCTION

This manual will help you get the most from your Betco BAC Pac Vacuum. Read it thoroughly before operating.

The Betco Vacuum is intended for commercial use.

PARTS & SERVICE:

Contact your **BETCO AUTHORIZED DISTRIBUTOR** for repair parts or service. Please specify the **Model & Serial Number** when discussing your machine.

NAME PLATE:

The **Model & Serial Number** of your machine is located on the **Name Plate** on the vacuum tank assembly. This information is often needed when ordering repair parts for the machine.

IMPORTANT SAFETY INSTRUCTIONS

When using an electrical appliance, basic precautions should always be followed, including the following:
Read all instructions before using.

! WARNING!

To reduce risk of fire, electric shock, or injury:

- * Do not leave the machine when it is plugged in. Unplug the unit from the outlet when not in use & before servicing.
- * To avoid electric shock, do not expose machine to rain. Store indoors.
- * Do not allow to be used as a toy. Close attention is necessary when used by or near children.
- * Use only as described in this manual. Use only manufacturer's recommended attachments.
- * Do not use with damaged cord or plug. If machine is not working as it should return it to a service center for inspection.

PREPARING THE MACHINE FOR OPERATION

! WARNING!

This machine contains moving parts. To reduce the risk of injury, always unplug the power cord before servicing.

Unwrap the power cord completely & plug into a properly grounded outlet.

Install cloth filter bag. (Optional paper bag may also be used.)

Attach hose to tank inlet.

Select proper floor tool. Install selected tool on 2-bend wand.

Turn switch located on vacuum tank to on position.

You are now ready to begin your cleaning task.

AFTER USE

Unplug the power cord, starting from the machine wrap the power cord onto the tank assembly.

Completely empty tank filter of debris.

Wipe the entire machine with a clean, damp cloth.

Inspect the machine & all accessories for damage. Perform any required maintenance or repairs before storage.

Store the machine in a clean, dry place.