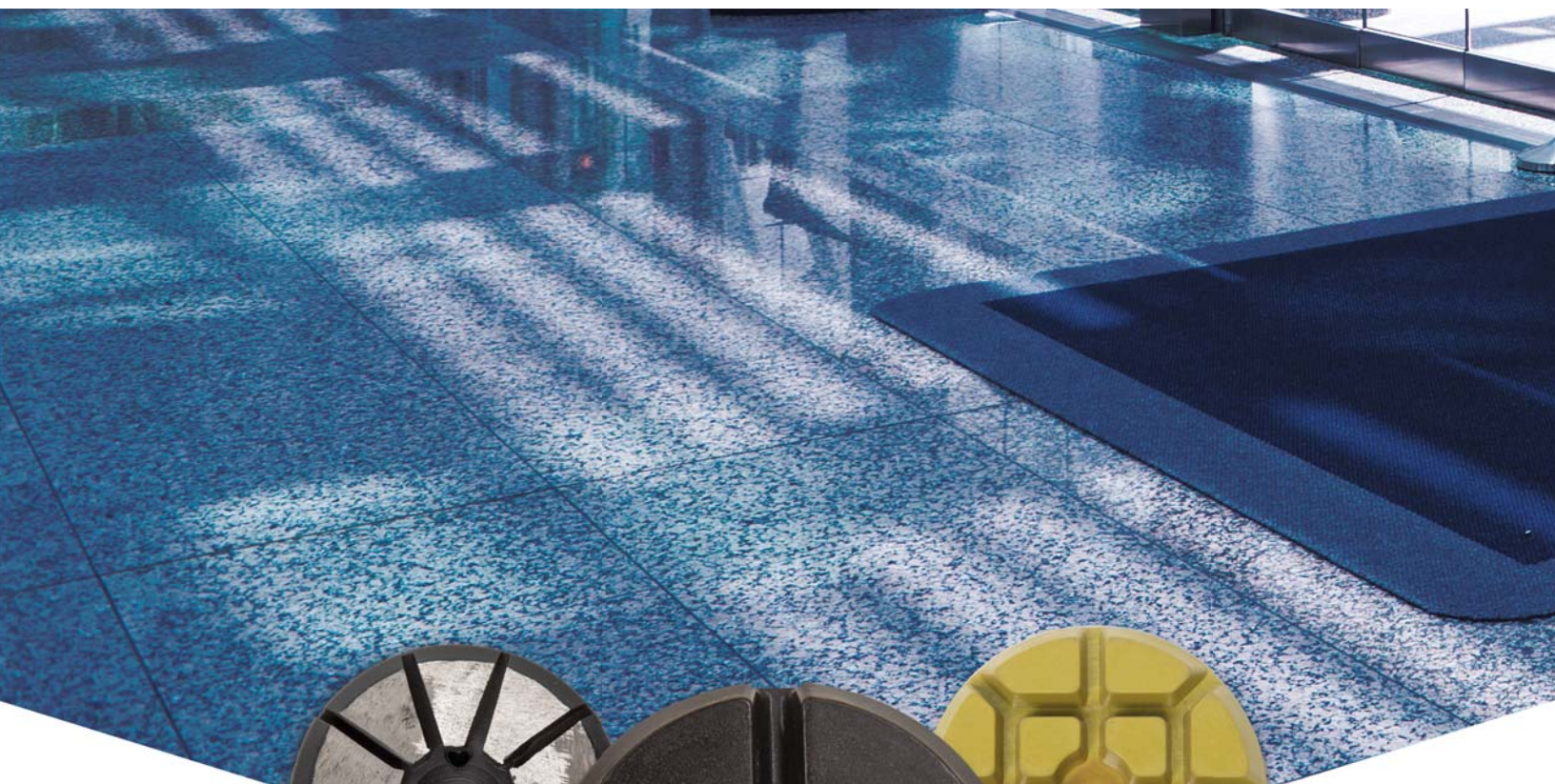


# CRMIX<sup>®</sup>

## PRODUCT CATALOG



Revolutionary Tooling and Chemicals  
for the Concrete Industry

**BETCO<sup>®</sup>**



# CRMX<sup>®</sup> Concrete System



- *Dustless polishing system*
- *Results are simple to replicate when system process is followed concisely*
- *CRMX<sup>®</sup> Concrete System is not reliant upon topical polish guards for gloss or clarity*
- *Significant reduction of tooling inventory*
- *Faster tooling change*
- *One process is used for every level of concrete hardness*
- *No more complicated diamond selection processes*

## Performance Based Comparative Analysis of Chemicals for Concrete

Most recent year of results: 2014

ASTM Testing Criteria	CRMX	Product 1	Product 2	Product 3	Product 4	Product 5
C770 Depth of Wear (60 min)	0.016"	0.027"	0.040"	0.029"	0.033"	0.038"
C309 & C1315, Concrete Curing	.33 kg	.69 kg	N/A	.73 kg	.71 kg	N/A
C805, Rebound (Schmidt Hammer)	7,700	6,300	5,100	6,100	5,700	5,400
C672, Scaling Resistance	0 to 1	2 to 3	4 to 5	2 to 3	2 to 3	4 to 5
C1028, Slip Resistance (Dry)	0.69	0.76	0.54	0.72	0.64	0.65
C1028, Slip Resistance (Wet)	0.62	0.55	0.41	1	1	0
D523, Gloss Meter	87.6	47	34.4	38.2	42.8	46.7
D5767 Distinction of Image (Clarity)	87.6	34.4	44.6	48.4	46.8	58.3
ST115, Surface Roughness *	7 Ra	28 Ra	34 Ra	37 Ra	29 Ra	15 Ra

\*Note: ST115 has been assigned an ASTM Standards Committee in Concrete and will become an ASTM Standard within 2 years.

# CRMX<sup>®</sup> Table of Contents

## Table of Contents

Performance Analysis of Chemicals	2
CRMX <sup>®</sup> Table of Contents	3
3-Step CRMX Concrete System	4
CRMX Concrete System Tools	5
CRMX Concrete System Chemicals	6 - 7
Preparation Zone Tools	8
Edge Tools	9
Magnetic Adaptor Plate and Accessories	10
CRMX Concrete System Results	11
We Cover The Matrix	12

## 3-Step CRMX<sup>®</sup> Concrete System

**BEFORE APPLICATION:** Apply CRMX<sup>®</sup> Surface Refining Agent to aid in rapidly removing scratches and achieve high levels of clarity.

### Tooling - STEP 1 TOOL

Set the Canvas - RA100

Item # E84195

Use the Step 1 tool in conjunction with CRMX Surface Refining Agent.

### Chemical - CRMX SURFACE REFINING AGENT

Item # 167405

Apply at the start of Step 1 to aid in rapidly removing scratches and achieve high levels of clarity. Use with tools Step 1 and Step 2. It will eliminate the need for lengthy grinding steps.



+



Step 1

### Tooling - STEP 2 TOOL

Refine the Canvas - RA40

Item # E84197

Use the Step 2 tool to refine the surface.

### Chemical - CRMX DENSIFIER

Item # 167505

Apply after Step 2 for a densifier and hardener in one ready-to-use formula. It is a colorless liquid which hardens and dust-proofs concrete with nano-sized particles. The reacted surface creates an environment that does not welcome moisture or topical water spills.

Once properly applied, the finished surface provides substantial improvement in abrasion resistance and will significantly improve the durability of the surface when compared to untreated concrete. The densified floor has to be completely dry before proceeding with the polishing tool.



+



Step 2

### Tooling - STEP 3 TOOL

Polish the Canvas - RA20

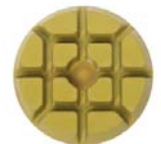
Item # E84198

Use the Step 2 tool to refine the surface.

### Chemical - CRMX ACID BLOCKER

Item # 167605

Apply after step 3 polishing to produce a high performing, ultra-hard, water-tight dust repellant surface that is chemical and acid staining resistant. It's a supreme chemical blocking system that is formulated to perform in high pH environments and high traffic settings such as retail groceries, commercial facilities and industrial floors. This blocker will leave concrete significantly harder and stain resistant. It provides a 60% increase in light reflectivity than untreated concrete surfaces without decreasing the coefficient of friction on surfaces. High-speed burnish CRMX Acid Blocker with a non-diamond high-speed burnishing pad after the chemical has completely dried.



+



Step 3

# CRMX<sup>®</sup> Concrete System Tools

## Step 1 Tool

### SET THE CANVAS - RA100

Item# E84195

This tool is designed to operate in conjunction with the CRMX<sup>®</sup> Surface Refining Agent and will eliminate the most difficult to remove scratches on even the hardest concrete surfaces. This tool can follow any prep tool in one fast step, drastically reducing labor and additional tooling costs.



## Step 2 Tool

### REFINE THE CANVAS - RA 40

Item# E84197

This tool is the first refinement tool in the CRMX Concrete Polishing System. The Step 2 tool is made from natural earth materials and will not transfer spent resins in the concrete surface that cause contaminated finishes. The Step 2 tool will provide a scratch-free surface that can continue with Step 3 of the CRMX Concrete Polishing System for a higher level of refinement.



## Step 3 Tool

### POLISH THE CANVAS - RA 20

Item# E84198

This tool is the single polishing tool in the CRMX Concrete Polishing System. The Step 3 tool is constructed with the highest grade epoxy resins in the industry. It was developed to produce the cleanest finishes among all polishing systems in the industry. Average gloss readings with the CRMX Concrete Polishing System rate approximately 70 on the gloss meter and will provide all the clarity desired.



## Revolutionary Technology!

CRMX Concrete System removes the complexities involved in the tooling and selection process. This innovative system can reduce labor costs as much as 60% and reduce contractor inventories by an average of 75% with this innovative 3-Step process. With this shortened selection process, it allows contractors to remove the guesswork out of tool choice, and the diamond selection process out of the operator's control.

Following proper steps and procedure is critical to achieve desired results. Choose any grit diamond tool you may need to remove coatings or prepare the surface to seamlessly lead into Step 1.

## CRMX® Concrete System Chemicals

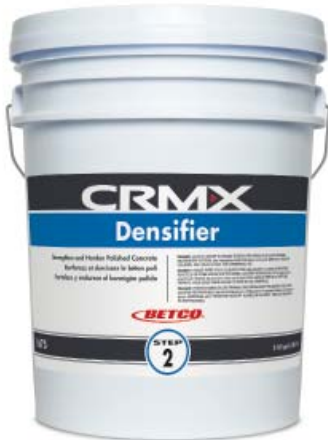


### CRMX® SURFACE REFINING AGENT

*Item # 167405*

CRMX® Surface Refining Agent is a chemical-based refining agent that is applied to concrete surfaces to aid in rapidly removing scratches and achieving high levels of clarity. Advanced technology has made possible this unique blend of nano-synthetic abrasives and nano-molecular chemistry to form together in a harmonious blend for refinement processes involving concrete polishing, stone slab polishing, marble polishing and cement-based terrazzo polishing.

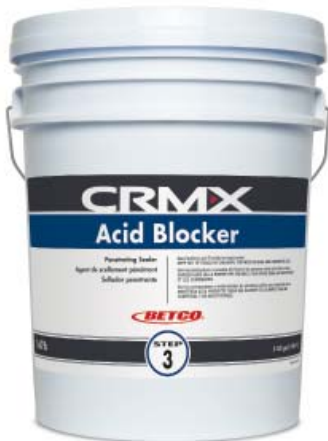
Using CRMX Surface Refining Agent will eliminate the need for lengthy grinding steps. A typical project using the CRMX Surface Refining Agent will only require 3 tooling steps after coatings have been removed.



### CRMX DENSIFIER

*Item # 167505*

CRMX Densifier is a concrete densifier and chemical hardener in a ready-to-use formula. Once CRMX Densifier is applied, a chemical reaction takes place producing a by-product that fills in the pores of the concrete, one molecule at a time. CRMX Densifier solidifies the concrete, eliminating dusting, pitting and excessive wear.



### CRMX ACID BLOCKER

*Item # 167605*

CRMX Acid Blocker is a micro-film forming, chemical cross-link hybrid, inorganic/organic surface treatment that hardens and seals concrete floors and delays etching concrete surfaces due to spills that contain highly acidic properties. It is the optimal choice if floors are exposed to high consumer traffic, large equipment, chemicals or abrasion.



## **DENSICLEAN™ FLOOR CLEANER**

**Item # 67912**

DensiClean™ is an advanced formula detergent that contains proprietary silicate chemistry with densifier to maintain the hardness of polished concrete floors while suspending the toughest soils.

## Preparation Zone Tools

### *Is Preparation Required?*

All tools in the preparation zone can be followed immediately by the CRMX® Step 1 tool after desired removal has been achieved. This means that no project will be more than 3 tooling steps from start to finish using the CRMX Concrete System.

1



### PREP 1

*Item # E84190*

This tool is used for removing paint, existing sealers and other thin topical coatings.

2



### PREP 2

*Item # E84191*

This tool is used for grinding down uneven saw cuts and removing high spots.

3



### PREP 3

*Item # E84192*

This tool is used for removing thick flooring adhesives, mastic and ceramic tile mortar.

4



### PREP 4

*Item # E84193*

This tool is used for rapid aggregate exposure and removal of difficult coatings.

5



### PREP 5

*Item # E84194*

This tool is designed for removal of thick coatings and epoxy floors.



# Edge Tools



## STEP 1 EDGE TOOL

### *Item # E84168*

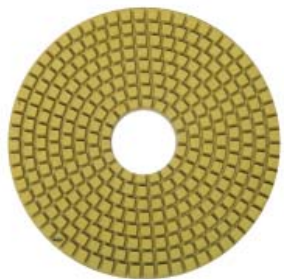
This 5", electroplated tool is designed to operate in conjunction with CRMX<sup>®</sup> Surface Refining Agent to eliminate the most difficult to remove scratches around edges.



## STEP 2 EDGE TOOL

### *Item # E84169*

This 5", resin tool is designed to operate in conjunction with CRMX Surface Refining Agent. This is the first refinement tool to use around edges. Follow use of this tool with CRMX Densifier.



## STEP 3 EDGE TOOL

### *Item # E84170*

This 5", resin tool is designed to operate in conjunction with CRMX Acid Blocker. This is the final refinement tool to use around edges.



## PREP 1 DOUBLE LAYER TOOL

### *Item # E84172*

This 5" prep tool is designed for removing light coatings and leveling uneven surfaces.

## Magnetic Adaptor Plate and Accessories

### *Tooling Changes Become A Snap!*

With our Magnetic Universal Adaptor Plate, tooling changes are as simple as snap-and-go.

- *No more wasted hours on the job-site changing conventional tooling.*
- *4 easy snap-and-go magnetic tooling saves you money by saving you time.*
- *A typical 30 minute tooling change is now reduced to mere seconds.*



### **MAGNETIC UNIVERSAL ADAPTOR PLATE**

#### ***Item # E84171***

The Universal Adaptor Plate consists of 3 trapezoid magnetic receivers and three 3 inch round magnetic receivers to accommodate round velcro type tooling and polishing pads.

The rigid design allows these plates to adapt to most universal tooling in the polishing industry. It's also used for metal and resin bond tooling, thus reducing the need for multiple plates for one machine.

These plates will fit HTC-800 and 950 SASE-PDG 8000 and Husqvarna- PG 820.



### **CRETE Rx<sup>™</sup> TOOL HOLDER**

#### ***Item # E84130***

For all 76mm or smaller velcro-backed tools.



### **CRETE Rx<sup>™</sup> POLISHING TOOL SPACER**

#### ***Item # E84131***

Provides additional flexibility to allow tooling to reach lower spots on uneven concrete. Velcro Spacer may also be used as a shim to utilize 100% of the tooling.

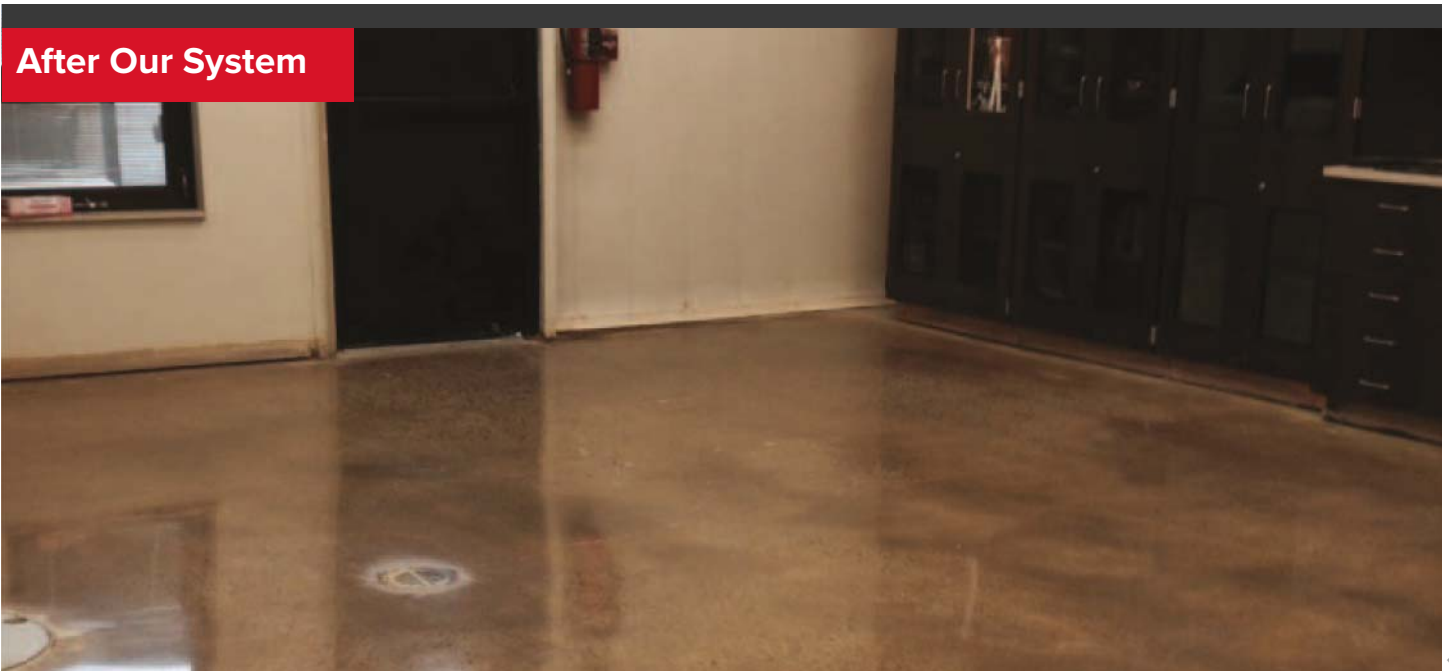
# CRMX<sup>®</sup> Concrete System Results

CRMX<sup>®</sup> Concrete System takes the guesswork out of concrete polishing; while reducing labor and delivering predictable, consistent results.

Before Our System

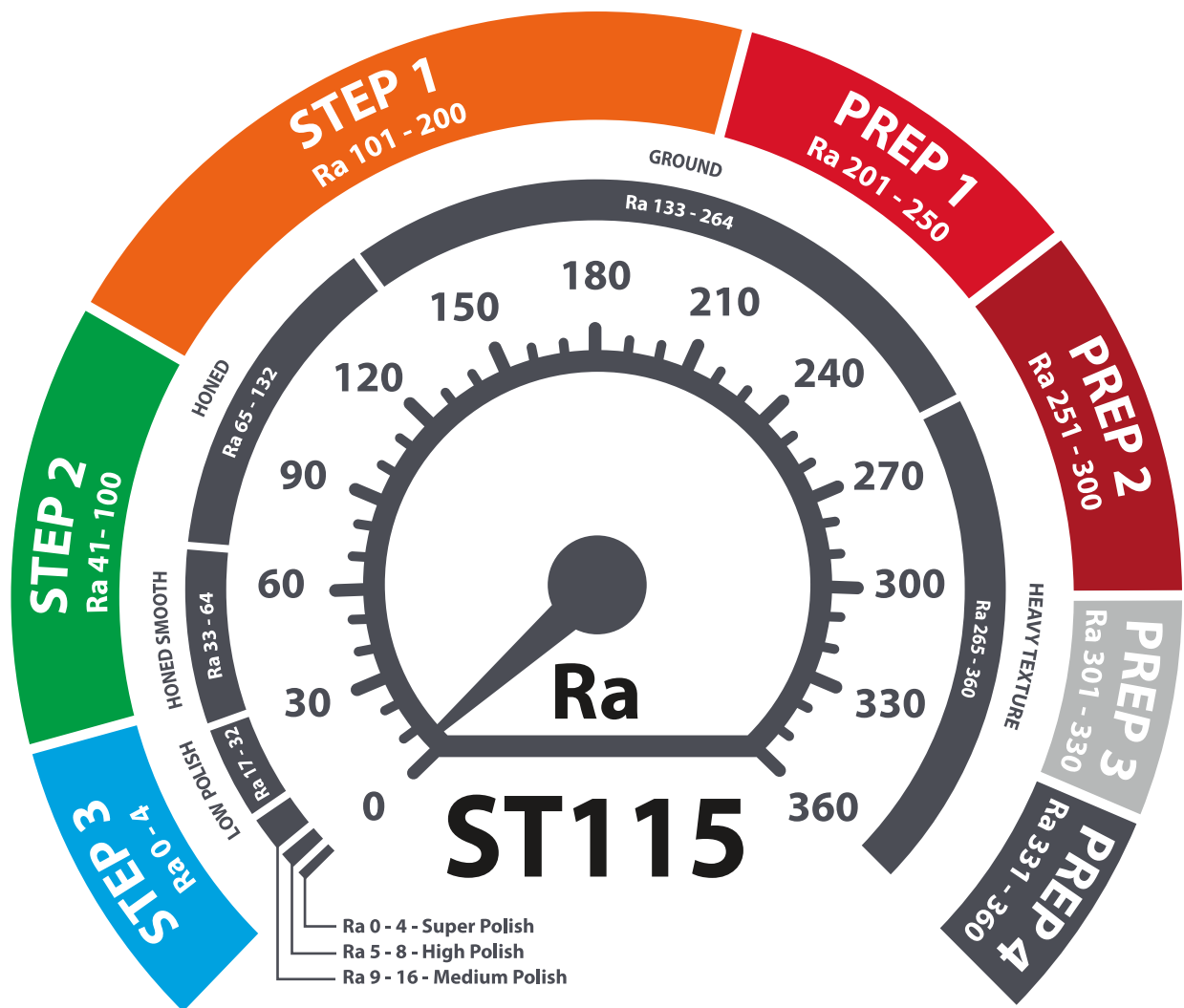


After Our System



## We Cover the Matrix

The definition of polished concrete is the process in which a high degree of refinement removes the necessary amount of surface damage and inclusions until it can only produce a smooth, highly refined, reflective surface produced by mechanical means of abrasion.



Cleaning Innovations That Matter.

888-GO BETCO | betco.com

©2018 Betco Corporation  
 All Rights Reserved.  
 400 Van Camp Road  
 Bowling Green, Ohio 43402  
 Item #91673-92

