



E29800-00



**CRETE<sub>Rx</sub>**  
TM

## 30" Concrete and Terrazzo Polishing Machine



**Operator and Parts  
Manual**

# TABLE OF CONTENTS

|  |         |
|--|---------|
| RECEIVING THE MACHINE.....               | 3       |
| CARBON MONOXIDE WARNING .....            | 4       |
| SAFETY .....                             | 5 - 6   |
| TANK USE AND STORAGE .....               | 6       |
| UNPACKING THE MACHINE .....              | 7       |
| ENGINE PREPARATION AND OPERATION .....   | 8 - 9   |
| MACHINE AND WORK AREA PREPARATIONS ..... | 10      |
| TOOL DRIVE PLATE INSTALLATION .....      | 11      |
| MACHINE OPERATIONS.....                  | 12      |
| TROUBLESHOOTING .....                    | 13      |
| FLOATING HEAD DECK ASSEMBLY .....        | 14 - 15 |
| IDLER ASSEMBLY.....                      | 16 - 17 |
| SOLUTION SYSTEM.....                     | 18 - 19 |
| GEAR BOX ASSEMBLY.....                   | 20 - 21 |
| ENGINE POWER SYSTEM.....                 | 22 - 23 |
| ENGINE AND CARBURETOR .....              | 24 - 25 |
| EMISSION SHUT DOWN .....                 | 26 - 27 |
| SOLUTION SWITCH .....                    | 28 - 29 |
| ENGINE SHUT DOWN SWITCH.....             | 30 - 31 |
| FUEL REGULATION .....                    | 32 - 33 |
| ENGINE SHUTDOWN WIRING .....             | 34      |
| ELECTRICAL WIRING DIAGRAM .....          | 35      |
| EMISSIONS WARRANTY .....                 | 36 - 37 |
| WARRANTY.....                            | 40      |

# RECEIVING THE MACHINE

Immediately check, when receiving the machine, that all the materials indicated on delivery documents have been received and also that the machine has not been damaged in transit. If it has been damaged, this damage must be immediately reported to the shipper and also to our customer service department or a claim may not be made.

## Introduction

This machine is designed to work with BETCO's Crete Rx™ Concrete System. This floor machine Hones and Polishes concrete and terrazzo floors through the action of its counter rotating deck and satellites, and the properly installed BETCO Crete Rx Honing and Polishing tools.

**Only use this machine for its intended purpose.** Please keep the machine in good working order by performing routine maintenance. Read this instruction manual and refer back to it when machine questions arise. The BETCO technical customer service representatives should be contacted with machine questions not answered by this manual.

## Technical Specifications

| TECHNICAL DESCRIPTION  | Measurement Unit           | Crete Rx™ CP30                            |
|--|----------------------------|---|
| Working width  | in (mm)                    | 30 (762)                                  |
| Work productivity  | ft²/h (m²/h)               | 4,500 (418)                               |
| Run Time   | hours                      | Up to 8                                   |
| Deck Speed   | RPM                        | 1040                                      |
| Satellite Speed  | RPM                        | 520 clockwise                             |
| Satellite Quantity   | -                          | 3   |
| Satellite Diameter   | in (mm)                    | 13 (330)                                  |
| Engine Capacity  | cu in (HP)                 | 39.8 (22)                                 |
| Propane Tank (D.O.T. 4E240)  | lbs                        | 20  |
| Battery Capacity   | volt                       | 12  |
| Solution tank capacity   | Gal (l)                    | 11 (42)                                   |
| Head Pressure (with empty solution tank)                                 | Lbs. (Kg)                  | 615 (279)                                 |
| Head Pressure (with full solution tank)                                  | Lbs. (Kg)                  | 710 (322)                                 |
| Weight of Empty Machine  | Lbs. (Kg)                  | 950 (431)                                 |
| Weight of Full Machine   | Lbs. (Kg)                  | 1047 (475)                                |
| Machine dimensions, operating configuration<br>(Length / Height / Width) | in x in x in<br>(mm/mm/mm) | 73.5 x 50.0 x 30.0<br>(1887 / 1270 / 762) |
| Machine dimensions, stored configuration<br>(Length / Height / Width)    | in x in x in<br>(mm/mm/mm) | 55.0 x 50.5 x 30.0<br>(1397 / 1283 / 762) |



## **WARNING - CARBON MONOXIDE LETHAL EXHAUST GAS - MUST READ THIS! -**



### **Never Run The Engine In A Closed Building Or Confined Area**

Exhaust gases contain poisonous carbon monoxide.  
Carbon monoxide is odorless, colorless, and can cause death if inhaled.

### **Carbon Monoxide Poisoning Symptoms**

Train your employees to know the warning signs of carbon monoxide poisoning.

Mild carbon monoxide poisoning may cause any of the following:  
Headache, drowsiness, faintness, poor coordination, nausea, and vomiting.  
Turn the engine off and immediately get to fresh air if you have any of these symptoms.

Do not run the machine until it is given an emissions test and repairs made by an authorized distributor.

- Local emissions testing is available at a fork-lift service department.

Moderate or severe carbon monoxide poisoning causes confusion, unconsciousness, chest pain, shortness of breath, and coma. Thus, most victims are not able to move themselves and must be rescued. Severe poisoning is often fatal.

Carbon monoxide is dangerous because a person may not recognize drowsiness as a symptom of poisoning. Consequently, someone with mild poisoning can go to sleep and continue to breathe the carbon monoxide until severe poisoning or death occurs. Some people with long-standing, mild carbon monoxide poisoning caused by furnaces or heaters may mistake their symptoms for other conditions, such as the flu or other viral infections.

### **Carbon Monoxide Detectors**

CO detectors are a must for safe operation of your equipment. Various types are available. A “CO” carbon monoxide detector detects carbon monoxide before it reaches dangerous levels. Detectors are a must for those who run propane powered equipment. The CO Detector is for everyone’s protection against Carbon Monoxide Poisoning.

- Carbon Monoxide Detector - Passive
  - Effective for 30 days after package has been opened.
  - Write the date opened on the detector.
  - Mount with self-adhesive strip on the machine handle.
  - Train machine operator to check detector regularly.
  - If the **orange disk changes to gray or black** - your Carbon Monoxide Levels are at a Dangerous Level.
  - If the **orange disk changes to gray or black** you must **turn your buffer off immediately** and return it to your nearest authorized distributor for an emissions test.
  - **Do Not Restart** the machine until the emissions have been checked and corrected.
  - This is for your protection as well as your customers. CO detectors are a must for safe operation and maximum efficiency of your equipment.
  - For replacement CO detectors, contact your distributor. Ask for the **carbon monoxide detector, part# E012426.**
- Carbon Monoxide Detector - battery operated with alarm
  - Available from various sources

# SAFETY

## Important Safety Information

All LPG (Liquid Propane Gas) powered engines, including this engine, produce Carbon Monoxide (CO). It is a **Lethal Poison** that is colorless, odorless, tasteless, and non-irritating gas. You must read “Danger: Lethal Exhaust Gas” information below.

Keep hands, feet, and loose clothing away from all moving parts while the machine is in operation. The exhaust system gets very hot so keep hands, clothing and any items that can burn away from the engine, engine manifold, and muffler.

These machines are tough and durable, however do not abuse the machine. With proper care and maintenance this unit will give you years of trouble free operation.

## Carbon Monoxide Safety Information

Engine exhaust gases contain poisonous carbon monoxide. Carbon monoxide is odorless, colorless, tasteless, and can cause death if inhaled. Failure to provide proper venting of CO, failure to properly maintain the engine, or failure to properly train personnel of the dangers and warning signs of carbon monoxide exposure may result in **Serious Injury Or Death** to the operator and others in the area.

- Read the labels on the machine carefully. Do not cover the labels. Replace the labels if they become damaged.
- This propane floor machine must only be operated by authorized and trained professionals.
- The operator must wear the appropriate Personal Protective Equipment (gloves, shoes, helmet, glasses, etc.)
- When operating the machine do not endanger other people.
- Workers should be trained to recognize the hazards of carbon monoxide and the early symptoms of carbon monoxide poisoning.
- Any equipment with the potential to produce carbon monoxide presents a significant hazard when used indoors. They must be used with great caution. Opening a door or window, or running an exhaust fan will not necessarily supply adequate ventilation. Avoid inhaling exhaust fumes and never run the engine in a closed building or confined area without proper ventilation.
- Use only as described in this manual.
- **Do not run the machine with the throttle in the choke position.**
- Do not allow engine to run unattended.
- If you have any indication that the engine is not running properly, immediately shut the machine off. Perform routine maintenance and if further service is required, contact your dealer or contact BETCO technical service.
- A carbon monoxide detector and alarm should be available to alert workers of emissions.
- Have a carbon monoxide detector attached to machine handle or have machine operator wear a carbon monoxide detector. (See carbon monoxide detector page).
- Maintenance and repairs must be done by qualified personnel.
- When replacing parts, use only ORIGINAL replacement parts from your Authorized BETCO Dealer.
- If the machine is not working properly, have it serviced by a BETCO authorized service center.
- Have your BETCO service center perform routine maintenance on the machine once a year.
- Install fuel cylinder in a well ventilated place.
- Be aware of possible leaks of propane gas if odor is present.
- If the machine is stored inside a building, remove the fuel cylinder and store properly outside.
- Secure fuel cylinders when being transported.
- If tank is left attached to the machine then valve should be OFF.
- Never store fuel cylinders in a vehicle, building, or area where they may exposed to high temperature.
- Do not operate the machine with any openings blocked.
- Keep openings free of debris that may reduce airflow.
- Remove fuel cylinder and disconnect battery before servicing.

*(list continued on next page)*

## SAFETY (continued)

- Do not place objects on the machine.
- Never use the machine in an explosive environment.
- Do not use the machine as a means of transportation.
- Use a dry powder fire extinguisher in case of fire or use water.
- Do not strike shelving or scaffolding.
- Never remove guards that require tools to remove.
- When your BETCO machine is ready to be disposed of, the machine must be disposed of properly. It contains oils and electronic components. The machine itself was built using totally recyclable materials.
- Use only tools furnished with the machine or those specified in the user's manual.

### Silica Dust and the Use of a Respirator

Silica is a sand component of concrete and its dust can cause severe medical conditions, such as; Silicosis, Lung Cancer, Tuberculosis, Autoimmune and Chronic Kidney Diseases and non-malignant respiratory diseases. BETCO highly recommends the use of a respirator during concrete honing and polishing. For more information on Silica safe handling, storage and safety measures visit [www.u-s-silica.com](http://www.u-s-silica.com) or call 1-800-35-NIOSH.

## TANK USE AND STORAGE

### Propane Tank Use

We use the Worthington gas cylinders designed for vapor withdrawal. The fuel lock offs, regulators, and engines are also designed for vapor withdrawal.

- We recommend that you use the OPD (Overflow Protection Device) vapor withdrawal type cylinder. These style tanks have a triangle shaped valve handle.
- Do not overfill - the best gauge is a scale - never allow tank to weigh over **36 pounds** for an aluminum tank and **43 pounds** for a steel tank.
- Connect fuel cylinder to machine in a well ventilated place.
- Be aware of possible leaks of propane gas if odor is present.
- Use propane tanks designed for vertical use only.
- New tanks must be purged of air at first filling.

### Propane Tank Storage

- Store tanks outside in a well-ventilated area.
- Never store fuel cylinders in a vehicle, building, or area where they may be exposed to high temperature.
- If the machine is stored inside a building, remove the fuel cylinder and store properly outside.
- Secure fuel cylinders when being transported.
- If tank is left attached to the machine then valve should be OFF.
- Store tanks in the upright position (valves up).
- Be aware of possible leaks of propane gas if odor is present.



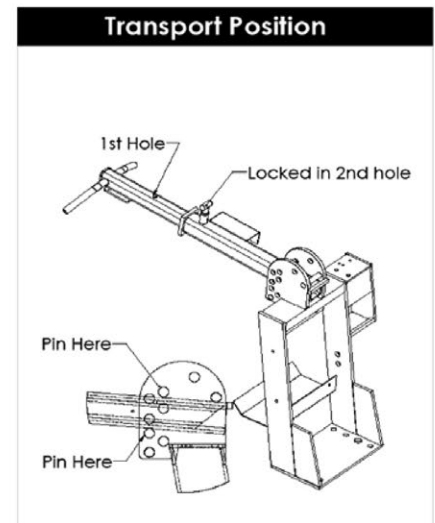
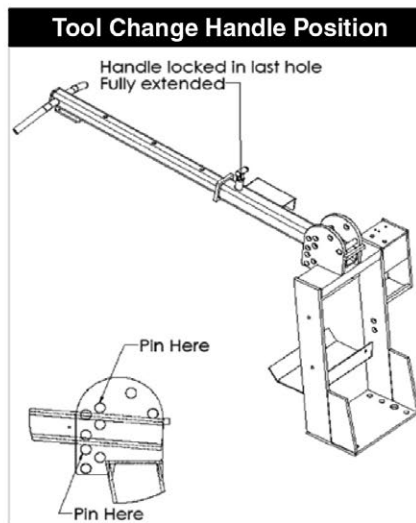
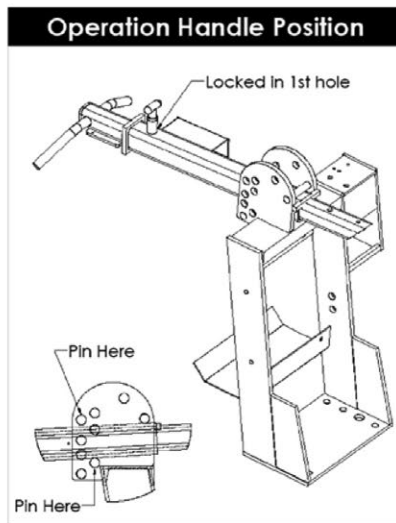
# UNPACKING THE MACHINE

This machine arrives securely fastened to a reinforced pallet and must be removed in the following fashion to ensure no damage occurs to the machine, property or personnel.

1. It is vital that this machine and pallet be placed on a level surface prior to unpacking the machine.
2. Remove the ratchet straps securing the front of the machines deck to the pallet.
3. Remove the steel fastening plates from each of the machines wheels.  
**Note: A ¾" wrench or ratcheting socket is necessary to remove the steel plate fasteners securing the machines wheels to the pallet deck.**
4. Unfold the handle from the Stored position to the Transport position.
5. Install the transport wheel following the instructions in the "Transport Wheel Installation" section.  
**Caution: Transport wheel installation requires two people!**
6. Slowly push the machine forward in the Transport position towards the front of the pallet.
7. Keeping the transport wheel raised slightly off the pallet deck push it past the edge of the pallet ensuring enough clearance is given for the front edge of the deck to not touch the pallet deck.
8. Slowly lower the transport wheel onto the ground.
9. Continue to slowly push the machine forward until the back wheels come to the edge of the pallet.
10. Ensure no personnel or obstructions are in the path of the machine and carefully push the machine off the pallet. **Warning: The machine is very heavy and will drop rapidly off the pallet onto the ground.**
11. Check machine for damage.
12. Install the tool drivers following the instructions in the "Tool Drive Plate Installation" section.
13. Properly dispose of pallet and all shipping material.

## Adjusting the Handle

The machine is equipped with a telescoping and adjustable handle. See diagrams for detailed position placement.



# ENGINE PREPARATION AND OPERATION

| <b>PERIODIC MAINTENANCE</b><br>PLEASE REFER TO ENGINE OWNERS MANUAL FOR<br>MORE INFORMATION | <b>Daily</b> | <b>EVERY<br/>25<br/>HOURS</b> | <b>EVERY<br/>50<br/>HOURS</b> | <b>EVERY<br/>100<br/>HOURS</b> | <b>EVERY<br/>200<br/>HOURS</b> |
|---|--------------|-------------------------------|-------------------------------|--------------------------------|--------------------------------|
| Check engine oil level and add if needed  | *            |                               |                               |                                |                                |
| Check and clean engine intake foam and intake paper filter                                  | *            |                               |                               |                                |                                |
| Check and clean engine cooling air intake filter  | *            |                               |                               |                                |                                |
| General check for loose or lost nuts, screws, oil leakage, fuel hose connection, etc.       | *            |                               |                               |                                |                                |
| Clean air intake foam filter  |              | *                             |                               |                                |                                |
| Clean air intake paper filter   |              | *                             |                               |                                |                                |
| Check belt tension  |              | *                             |                               |                                |                                |
| Change engine oil   |              |                               | *                             |                                |                                |
| Change oil filter   |              |                               |                               | *                              |                                |
| Clean dust and dirt from cylinder and cylinder head cooling fins                            |              |                               |                               | *                              |                                |
| Tighten nuts and screws   |              |                               |                               | *                              |                                |
| Clean and re-gap sparkplugs   |              |                               |                               | *                              |                                |
| Replace air intake foam filter  |              |                               |                               |                                | *                              |
| Replace air intake paper filter   |              |                               |                               |                                | *                              |
| Replace spark plugs   |              |                               |                               |                                | *                              |
| Check and adjust valve clearance  |              |                               |                               |                                | *                              |
| Clean combustion chamber  |              |                               |                               |                                | *                              |
| Clean and lap valve seating surface   |              |                               |                               |                                | *                              |

## IMPORTANT NOTES:

1. Before performing any maintenance, turn off the engine and disconnect the fuel tank and battery.
2. Change engine oil and oil filter after first 8 hours of operation.
3. Maintenance should be done by qualified personnel only.
4. Change foam and paper air intake filters and spark plugs after first 25 hours of operation.

## Checking Oil Levels and Filters

**Check Oil Level:** Starting the engine without the proper amount of oil will cause severe engine damage. Always keep the engine oil level between the full and add marks on the dipstick. Do not loosen oil fill cap or remove dipstick while engine is running.

- Park your machine on a level surface.
- Turn the oil fill cap counter clockwise and then lift from the fill tube.
- Wipe the dip stick clean and push it back into the oil fill tube until the cap seats and then withdraw it to check: the oil level. (Do not screw cap on to check oil). Add if necessary. If the oil level is low, add API Class SM oil having a SAE viscosity grade appropriate for the expected temperatures as indicated in the Operators Manual (Usually a HD30 or 10W30).
- Important Note: **Do Not Overfill**
- Replace oil cap.

Inspect fuel hoses and fittings for wear and leaks. Have all worn hoses and leaks repaired before operating.

Look and listen for exhaust leaks. Have all leaks repaired before operating.

Check the carburetor filter and air filter for debris. Clean and replace if necessary.

Connect fuel hose to tank by screwing the hose fitting to tank. You must tighten all the way down to make fuel connection. Turn tank knob slowly until you hear the flow of fuel into fuel system.



# ENGINE PREPARATION AND OPERATION (continued)

## Installing the Propane Cylinder

1. Take machine to a well ventilated area.
2. Check cylinder for overfill.
3. Place cylinder on the machine in tank holding area and secure strap.
4. Attach the propane hose coupling and fully tighten.
5. Open service valve slowly. Be alert for the odor of propane that may indicate a leak.
6. To remove the cylinder, reverse the procedure.

## Starting the Engine

**Before starting the engine, read the Owner's Manual and the Engine Operation Manual.**

The engine is equipped with a 12 volt starter and a key switch start.

1. Install the propane cylinder following the instructions in the "Installing the Propane Cylinder" section  
**Warning: Start the machine with the floor tools in the running position, flat on the floor.**
2. Pull the choke lever to the choke position and then turn the ignition - key switch to the 'start' position and hold it there until the engine starts.  
**Caution: Do not crank for more than 20 seconds at a time and wait at least one minute between tries when cranking. See the troubleshooting guide if the engine does not start after several tries.**
3. After engine starts, depress the choke lever to the off position and then set the throttle so that the centrifugal clutch will not engage until the engine has warmed up (less than 1500 RPM). Do not operate the machine until the engine has warmed up sufficiently (3 to 5 minutes).
4. Check for frost on the regulator and fuel line. Frost will indicate that the machine is drawing liquid propane from an overfilled or incorrect tank.

**Warning: Do not run engine with throttle in the choke position! Excessive harmful emissions will be produced. Personal harm or engine damage may occur.**

## Stopping the Engine

1. Set the throttle to the lowest position.
2. Turn propane tank valve to the closed position (turn clockwise) and allow the engine to continue running until it runs out of fuel.
3. Turn key to the off position.

**In an emergency, immediately press and hold the kill switch and turn the key to the 'off' position. Backfiring may occur when using this method.**

# MACHINE AND WORK AREA PREPARATIONS

**Caution:** Before performing any maintenance or machine preparation, turn off the engine and disconnect the fuel tank and battery.

If using the solution tank to dispense liquid on the floor, fill the tank with the desired chemical to be used. Perform all engine and machine checks and maintenance as needed.

## Transport Wheel Installation

**Caution:** Do not install the transport wheel with the engine running.



**Warning:** Transport Wheel Installation Requires two people!

To install the Transport Wheel Support Arm follow these steps:

1. Extend the handle to the Tool Change Position. Press downward on the handle bar until the back of machine rests on the ground.
2. While holding the handle down, have an assistant release the locking pin on the Transport Receiver and slide the Transport Wheel Support Arm into the Transport Receiver.
3. Slowly lower the machine back onto the level surface.
4. Collapse the handle back into the Transport Position.

## Transport Wheel Removal

**Caution:** The transport wheel must be removed before starting the engine.



**Warning:** Transport Wheel Removal Requires two people!

To remove the Transport Wheel Support Arm follow these steps:

1. Extend the handle to the Tool Change Position. Press downward on the handle bar until the back of machine rests on the ground.
2. While holding the handle down, have an assistant release the locking pin on the Transport Receiver and remove the Transport Wheel Support Arm.
3. Slowly lower the machine back onto the level surface.
4. Collapse the handle back into the Operating Position.

# TOOL DRIVE PLATE INSTALLATION

## **Betco Crete Rx Honing & Polishing Tool Installation**

The drive plates provided with this machine are specifically designed for the BETCO® Crete Rx™ Concrete Floor System. These instructions are based on the use of this system.

With the transport wheel installed:

1. Check the drive plate and tool holders to ensure they are properly installed.
2. Check the Velcro on both the tool holder and tools to be installed.
3. Install the tools by firmly pressing a single tool into each of the tool holders and slightly twisting to ensure the Velcro properly adheres.

## **Area Preparation**

This floor machine is designed to be used only on concrete and terrazzo floors. Use on any other surface may cause personal harm, damage to property, or damage to the machine. Work areas should be prepared following these steps:

1. Ensure that the area is free of objects protruding from the floor and loose pieces of flooring.
2. The area to be worked on should allow adequate room for machine operation.
3. Proper ventilation must be used to prevent harmful gases from building up.
4. Do not use the machine in a work area where others are present and may be harmed.
5. Clean the floor of any loose debris and dirt.

# MACHINE OPERATIONS

**Caution: Never tip the machine back while the engine is running.**

## Honing Process

1. Ensure work area is a level surface and free from loose debris.
2. Start the engine following the instructions in the “Starting the Engine” section.
3. Increase the engine throttle to **3150 RPM**.
4. Slowly walk forward as the deck and satellites spin up to full speed.
5. Utilize the solution on/off switch to adequately soak the work area with BETCO Liquigrind solution.
6. Progress through the work area at **30 ft/min** using the BETCO® Crete Rx™ Honing Tool.
7. Ensure to overlap each pass by at least 1/3 of the deck's width.
8. Multiple passes over the working area may be required.
9. Stop the engine following the instructions in the “Stopping the Engine” section.
10. Ensure the solution tank valve is fully closed.
11. Follow the Honing process with proper slurry removal steps.

## Polishing Process

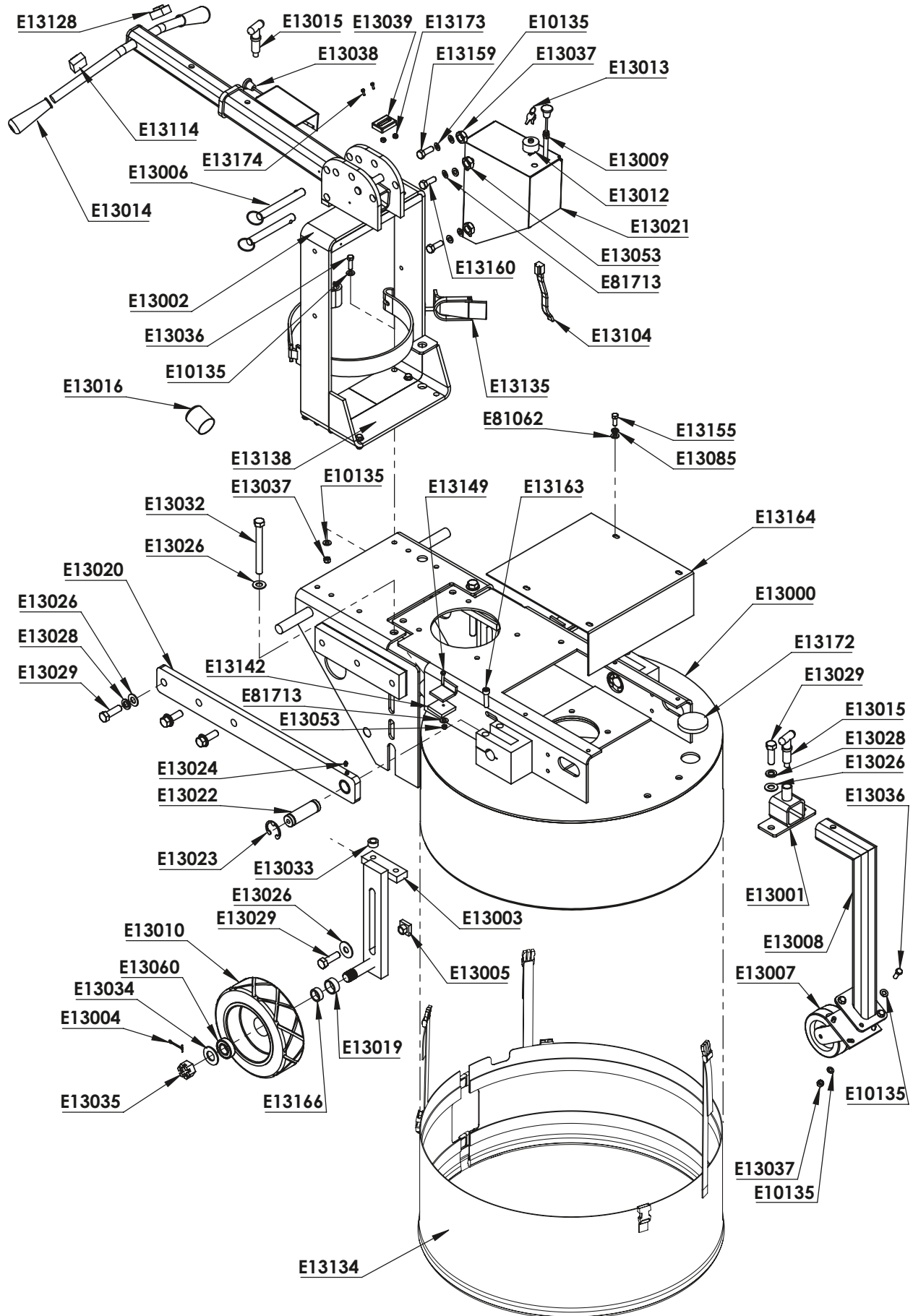
1. Ensure work area is a level surface and free from loose debris.
2. Start the engine following the instructions in the “Starting the Engine” section.
3. Increase the engine throttle to **3150 RPM**.
4. Slowly walk forward as the deck and satellites spin up to full speed.
5. Progress through the work area at **30 ft/min** using the BETCO Crete Rx Polishing Tool.  
**Note: The Betco Crete Rx Polishing step is performed dry with no solution on the work area.**
6. Ensure to overlap each pass by at least 1/3 of the deck's width.
7. Multiple passes over the working area may be required.
8. Stop the engine following the instructions in the “Stopping the Engine” section.
9. Follow the Polishing process with proper dust removal steps.

# TROUBLESHOOTING

| PROBLEM  | CAUSE                                       | POSSIBLE SOLUTION                                       |
|--|---|---|
| Engine will not turn over                      | Battery is dead                             | Recharge battery or replace if necessary                |
|  | Loose wire or bad connection                | Check wires and connections                             |
|  | Bad electrical component                    | Replace bad component                                   |
|  | Fuel system problem                         | Refer to engine owner's manual and read IMPORTANT below |
| Engine turns over, but will not start          | Propane tank shut off valve in off position | Open propane tank shut off valve completely             |
|  | Low oil                                     | Add oil   |
|  | Fuel system problem                         | Refer to engine owner's manual and read IMPORTANT below |
|  | Propane tank empty                          | Fill propane tank                                       |
|  | Engine problem                              | Refer to engine owner's manual and read IMPORTANT below |
| Hard to start                                  | Throttle lever in slow position             | Push throttle lever to fast position                    |
|  | Propane tank shut off valve not fully open  | Open propane tank shut off valve completely             |
|  | Some type of engine problem                 | Refer to engine owner's manual and read IMPORTANT below |
| Engine stops suddenly and will not restart     | Out of propane                              | Replace propane tank with full propane tank             |
|  | Low oil                                     | Add oil   |
| Engine overheats                               | Intake air filter is dirty                  | Remove air intake filter and clean                      |
|  | Incorrect oil level                         | Add or remove oil to achieve proper oil level           |
| Lacks power                                    | Some type of engine problem                 | Refer to engine owner's manual and read IMPORTANT below |
| Engine stops and will restart, but stops again | Emission shut-down system engaged           | Refer to engine owner's manual and read IMPORTANT below |
| Nothing here fixes the problem                 | Problem could have several causes           | Read IMPORTANT below                                    |
| Excessive vibration                            | Loose bolts on engine or deck               | Inspect and tighten all bolts                           |
|  | Improperly installed tools                  | With help, check and reinstall tools if needed.         |
|  | Incorrect oil level                         | Add or remove oil to achieve proper oil level           |
|  | Engine overloaded                           | See engine owner's manual for servicing                 |
|  | Some type of engine problem                 | Refer to engine owner's manual and read IMPORTANT below |

**IMPORTANT:** Propane fueled combustion engines produce dangerous gases and must be serviced by authorized service personnel trained specifically to service propane fueled engines and fuel systems. The troubleshooting tips are not intended to take the place of authorized service personnel. If you are unsure of what to do contact an authorized service personnel. Before working on this machine you must be familiar with the safety instructions in this manual.

# FLOATING HEAD DECK ASSEMBLY



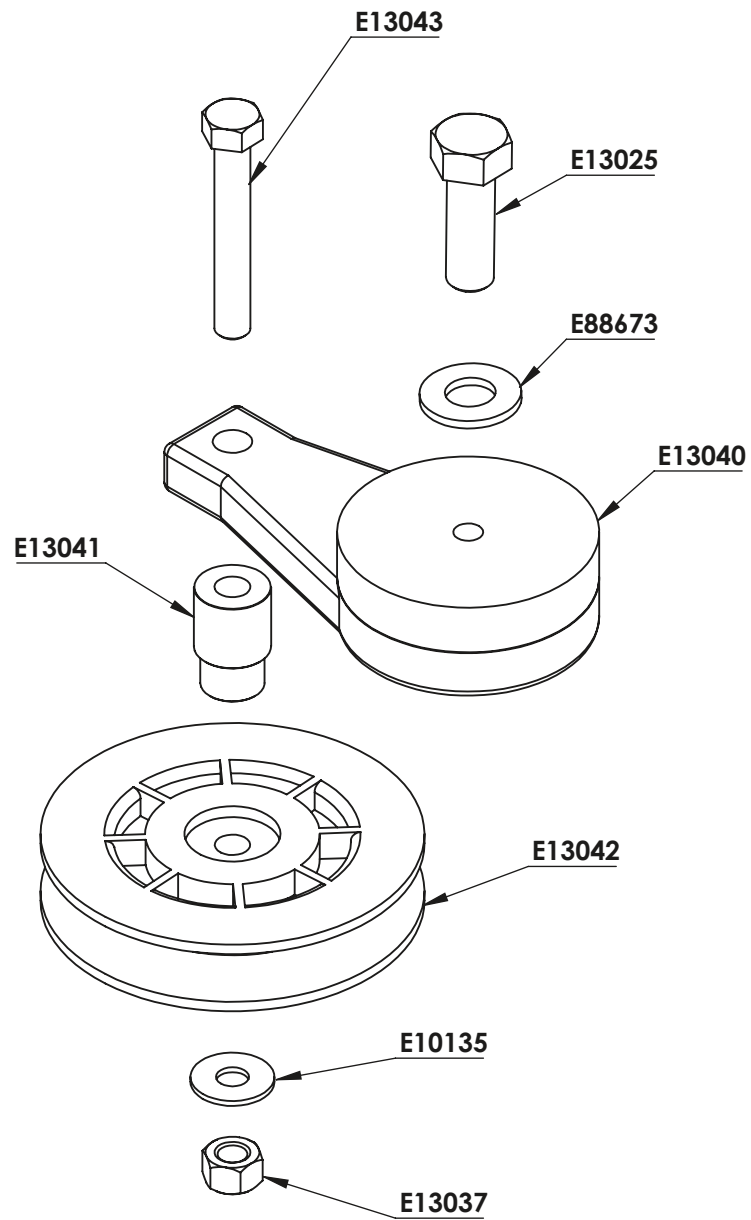


# FLOATING HEAD DECK ASSEMBLY PARTS LISTING

| Part#  | Description                              | Qty. |
|--------|--|------|
| E10135 | Washer, Flat, 3/8"                       | 24   |
| E13000 | Frame, Engine Platform                   | 1    |
| E13001 | Bracket, Transport Arm                   | 1    |
| E13002 | Handle Assembly                          | 1    |
| E13003 | Axle, Main Wheel, 13"                    | 2    |
| E13004 | Pin, Cotter                              | 2    |
| E13005 | T-Nut, 5/8"-11 Coarse"                   | 4    |
| E13006 | Pin, Handle                              | 2    |
| E13007 | Wheel, Transport                         | 1    |
| E13008 | Transport Wheel Support Arm              | 1    |
| E13009 | Choke Cable, Push/Pull                   | 1    |
| E13010 | Wheel Assembly, 10" x 2"                 | 2    |
| E13012 | Switch, Key                              | 1    |
| E13013 | Key (1)                                  | 1    |
| E13014 | Handle Grip                              | 2    |
| E13015 | Pin, Quick Disconnect                    | 2    |
| E13016 | Cap, Flexible Push On                    | 1    |
| E13019 | Spacer, Wheel, 5/8"                      | 2    |
| E13020 | Arm, Pivot                               | 2    |
| E13021 | Battery Box, Metal                       | 1    |
| E13022 | Pin, Pivot                               | 2    |
| E13023 | E-Clip                                   | 4    |
| E13024 | Fitting, Grease                          | 2    |
| E13026 | Washer, Flat, 5/8" SAE                   | 14   |
| E13028 | Washer, Split Lock, 5/8"                 | 8    |
| E13029 | Screw, Hex Cap, 5/8"-11 x 2", SS GR8     | 12   |
| E13032 | Screw, Hex Cap, 5/8"-11 x 6" Tap, SS GR8 | 2    |
| E13033 | Spacer, 1/2" x 5/8"                      | 2    |

| Part#  | Description                               | Qty. |
|--------|---|------|
| E13034 | Washer, Flat, 1" SAE                      | 2    |
| E13035 | Nut, Hex, 1"-14, Slotted                  | 2    |
| E13036 | Screw, Hex Cap, 3/8"-16 x 1-1/4"          | 10   |
| E13037 | Nut, Nyloc, 3/8"-16                       | 12   |
| E13038 | Throttle                                  | 1    |
| E13039 | Hour Meter, Mini Tach                     | 1    |
| E13053 | Nut, Nyloc, 1/4"-20                       | 3    |
| E13060 | Bearing, Wheel                            | 4    |
| E13085 | Washer, Split Lock, 5/16", Zinc           | 4    |
| E13104 | Wiring Harness                            | 1    |
| E13114 | Switch, Engine Shut Off, (Switch Only)    | 1    |
| E13128 | Switch, Solution On/Off, (Switch Only)    | 1    |
| E13134 | Splash Guard                              | 1    |
| E13135 | Tank Latch                                | 1    |
| E13138 | Tape, Velcro                              | 4    |
| E13142 | Arm Support                               | 2    |
| E13149 | Screw, Socket Head Button, 1/4"-20 x 1"   | 2    |
| E13155 | Screw, Hex Cap, 5/16"-18 x 1"             | 4    |
| E13159 | Screw, Socket Head Button, 3/8"-16 x 1    | 2    |
| E13160 | Screw, Hex Head, 1/4"-20 x 5-1/2"         | 1    |
| E13163 | Screw, Socket Head Cap, 7/16"-14 x 1-3/4" | 4    |
| E13164 | Cover, Front Pulley                       | 1    |
| E13166 | Spacer, Wheel, 1/2"                       | 2    |
| E13172 | Dome Plug                                 | 1    |
| E13173 | Nut, Hex, 6-32                            | 2    |
| E13174 | Screw, Round Combo Head, 6-32 x 2-1/2"    | 2    |
| E81062 | Washer, Flat, 5/16" USS                   | 4    |
| E81713 | Washer, Flat, 1/4"                        | 4    |

# IDLER ASSEMBLY

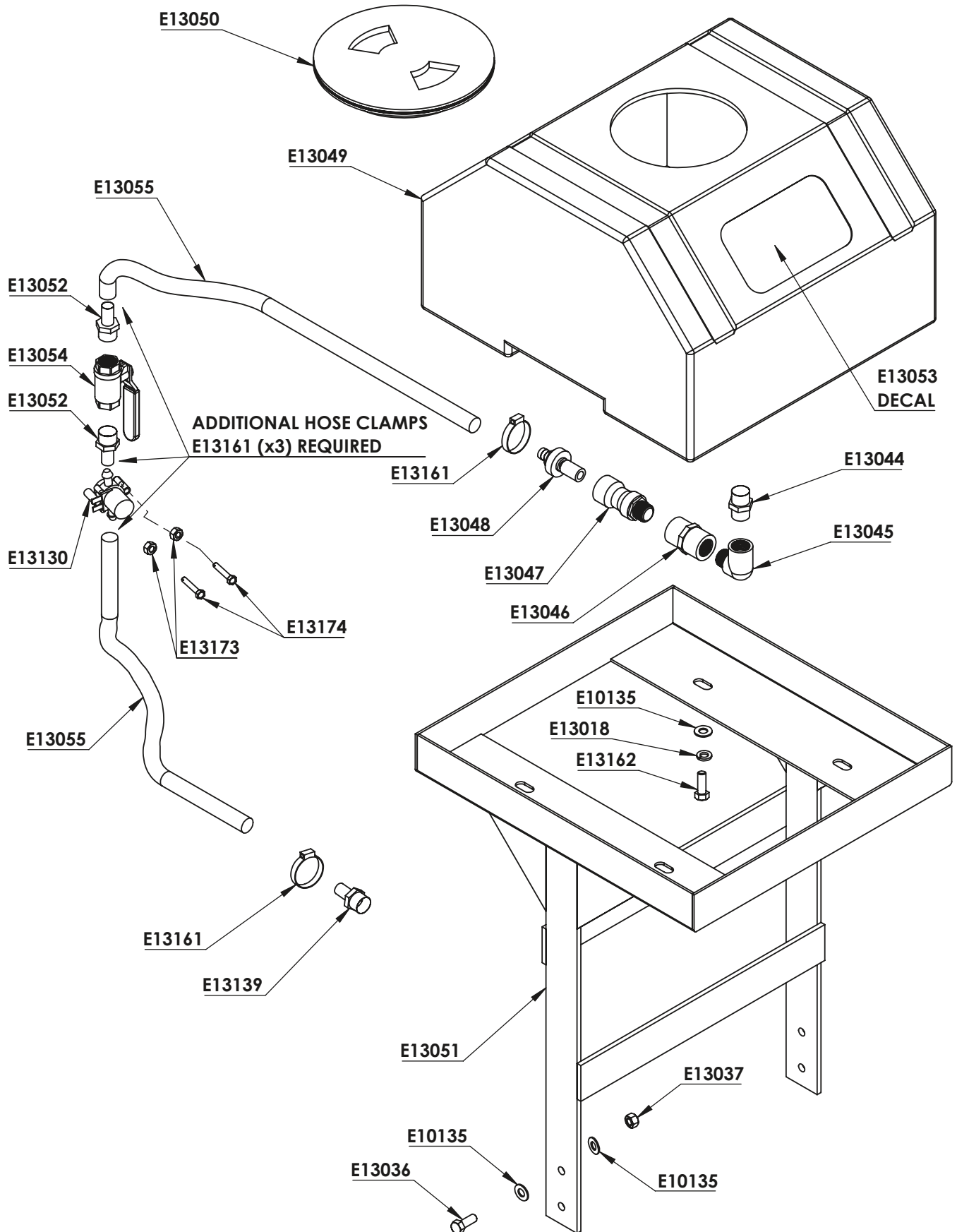


## IDLER ASSEMBLY PARTS LISTING

| <b>Part#</b> | <b>Description</b>           | <b>Qty.</b> |
|--------------|------------------------------|-------------|
| E10135       | Washer, Flat, 3/8"           | 1           |
| E13025       | Screw, Hex Cap, 3/8"-16 x 1" | 1           |
| E13037       | Nut, Nyloc, 3/8"-16          | 1           |
| E13040       | Arm, Tensioner               | 1           |

| <b>Part#</b> | <b>Description</b>               | <b>Qty.</b> |
|--------------|----------------------------------|-------------|
| E13041       | Bushing, Shoulder, 3/4"          | 1           |
| E13042       | Pulley, Idler                    | 1           |
| E13043       | Screw, Hex Cap, 3/8"-16 x 2-1/2" | 1           |
| E88673       | Washer, Fender, 3/8" ID, 1-1/4"  | 1           |

# SOLUTION SYSTEM

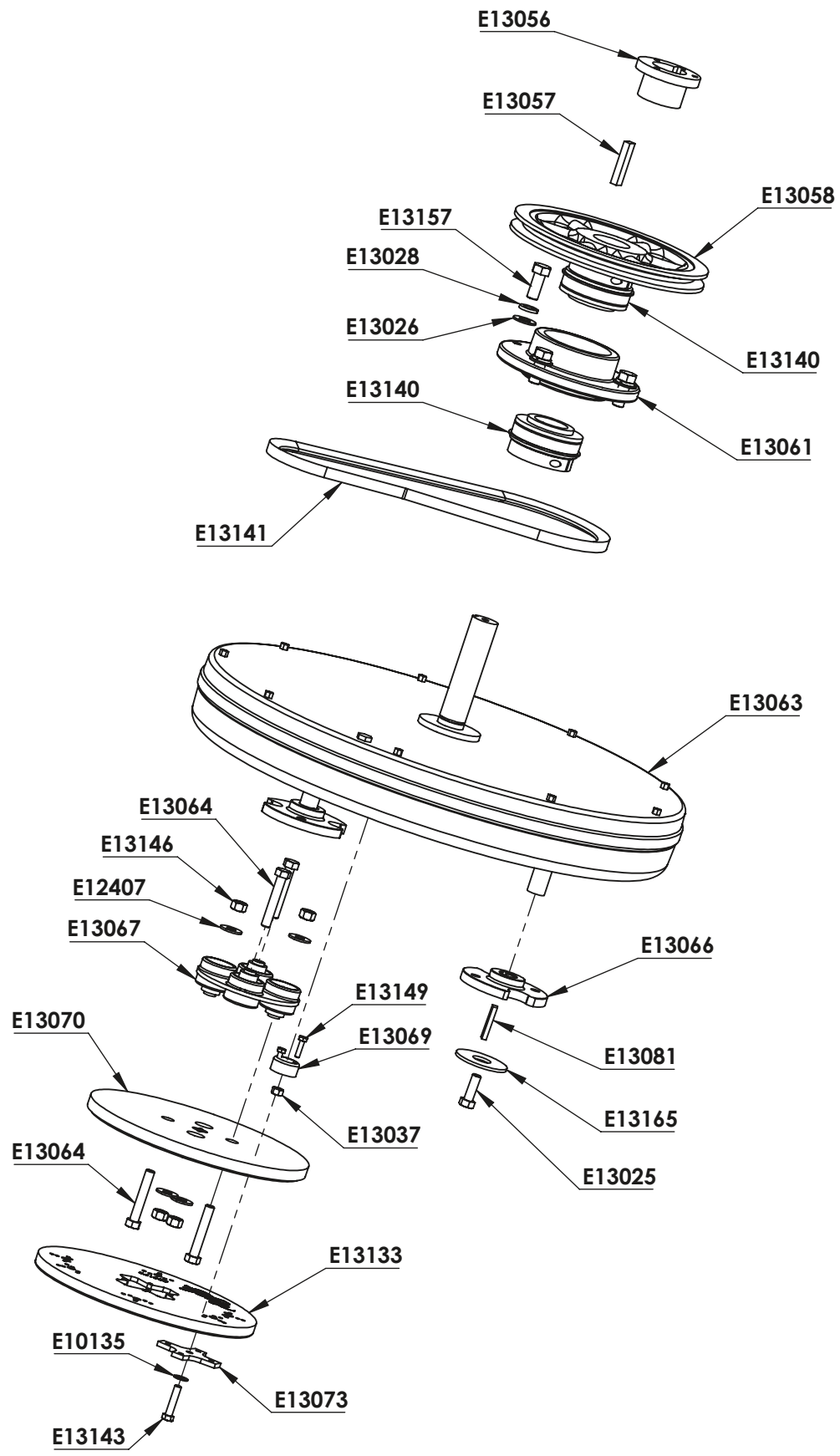


# SOLUTION SYSTEM PARTS LISTING

| Part#  | Description                           | Qty. |
|--------|---------------------------------------|------|
| E10135 | Washer, Flat, 3/8"                    | 12   |
| E13018 | Washer, Split Lock, 3/8"              | 4    |
| E13036 | Screw, Hex Cap, 3/8"-16 x 1-1/4"      | 4    |
| E13037 | Nut, Nyloc, 3/8"-16                   | 4    |
| E13044 | Nipple, 1/2" Pipe x 1-1/4"            | 1    |
| E13045 | Elbow, Female and Male, 1/2" NPT, PVC | 1    |
| E13046 | Coupling, 1/2" PVC                    | 1    |
| E13047 | Coupling, Female, Quick               | 1    |
| E13048 | Coupling, Male, Quick                 | 1    |
| E13049 | Tank, Solution                        | 1    |
| E13050 | Cap Assembly, Solution Tank           | 1    |

| Part#  | Description                            | Qty. |
|--------|--|------|
| E13051 | Bracket, Solution Tank                 | 1    |
| E13052 | Fitting, Male Thread, 1/2" Barb        | 2    |
| E13053 | Decal                                  | 1    |
| E13054 | Valve, Ball, 1/2"                      | 1    |
| E13055 | Hose, 1/2" Flexible                    | 1    |
| E13130 | Solenoid, Solution, 12V                | 1    |
| E13139 | Fitting, Female Thread, 1/2" Barb      | 1    |
| E13161 | Hose Clamp                             | 6    |
| E13162 | Screw, Hex Head, 3/8"-16 x 3/4"        | 4    |
| E13173 | Nut, Hex, 6-32                         | 2    |
| E13174 | Screw, Round Combo Head, 6-32 x 2-1/2" | 2    |

# GEAR BOX ASSEMBLY



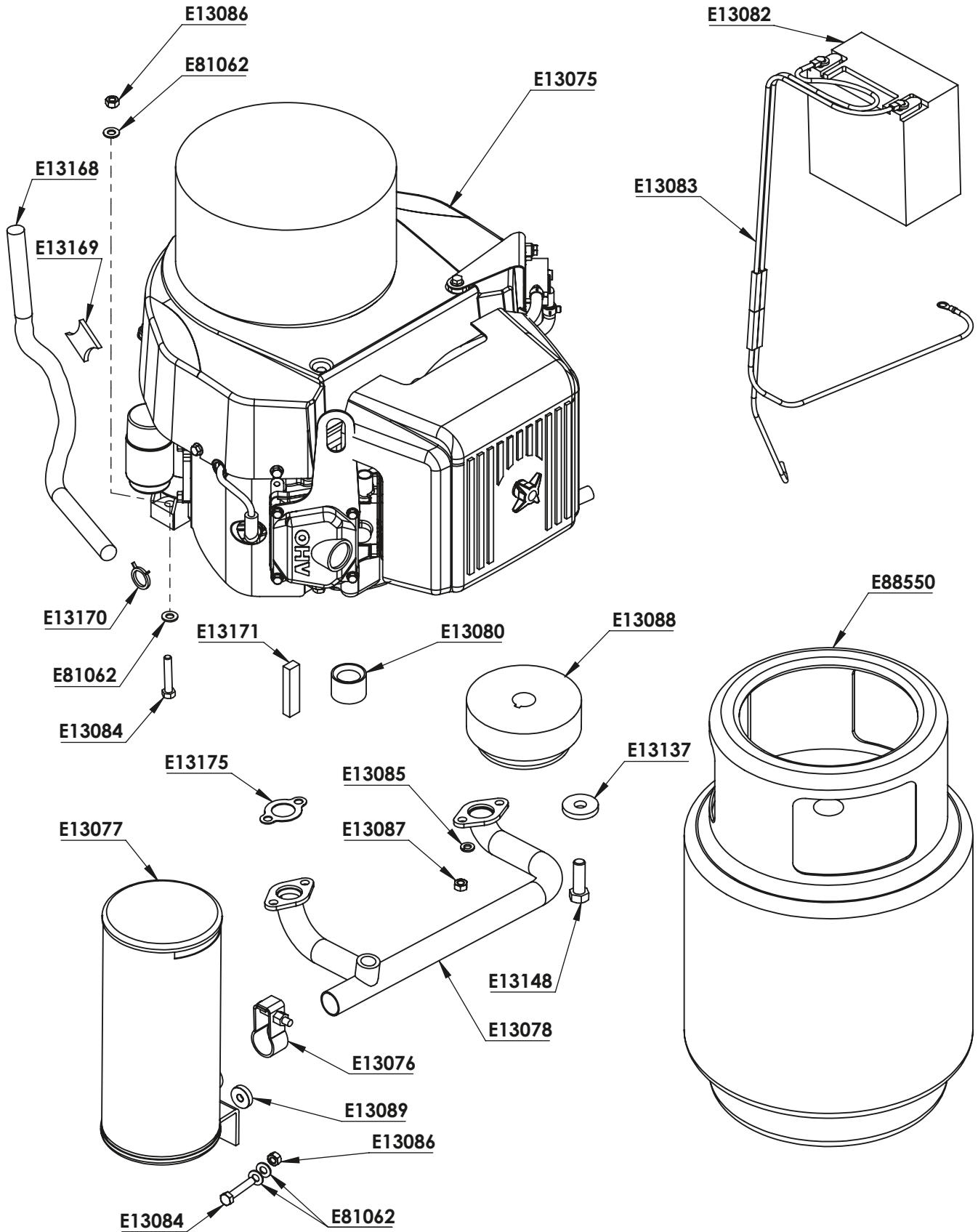


## GEAR BOX ASSEMBLY PARTS LISTING

| Part#  | Description                  | Qty. |
|--------|------------------------------|------|
| E10135 | Washer, Flat, 3/8"           | 3    |
| E12407 | Washer, Flat, 1/2" USS       | 12   |
| E13025 | Screw, Hex Cap, 3/8"-16 x 1" | 3    |
| E13026 | Washer, Flat, 5/8" SAE       | 4    |
| E13028 | Washer, Split Lock, 5/8"     | 4    |
| E13037 | Nut, Nyloc, 3/8"-16          | 3    |
| E13056 | Bushing, Pulley              | 1    |
| E13057 | Key Stock                    | 1    |
| E13058 | Pulley, 12-3/4"              | 1    |
| E13061 | Housing, Bearing             | 1    |
| E13063 | Gearbox                      | 1    |
| E13064 | Screw, Hex Cap, 1/2"-13 x 3" | 12   |
| E13066 | Morflex, Flange Keyed        | 3    |

| Part#  | Description                             | Qty. |
|--------|---|------|
| E13067 | Morflex 602                             | 3    |
| E13069 | Cover, Bolt, Drive Plate                | 3    |
| E13070 | Plate, Drive, 13"                       | 3    |
| E13073 | 4-Leaf Clover                           | 3    |
| E13081 | Key Stock                               | 3    |
| E13133 | Plate, Steel Diamond, 13"               | 3    |
| E13140 | Bearing                                 | 2    |
| E13141 | Belt, BX-55                             | 1    |
| E13143 | Screw, Hex Head, 3/8"-16 x 1"           | 3    |
| E13146 | Nut, Nyloc, 1/2"-13                     | 12   |
| E13149 | Screw, Socket Head Button, 1/4"-20 x 1" | 6    |
| E13157 | Screw, Hex Cap, 5/8"-18 x 1-1/2"        | 4    |
| E13165 | Washer, Fender, 3/8" ID                 | 3    |

# ENGINE POWER SYSTEM

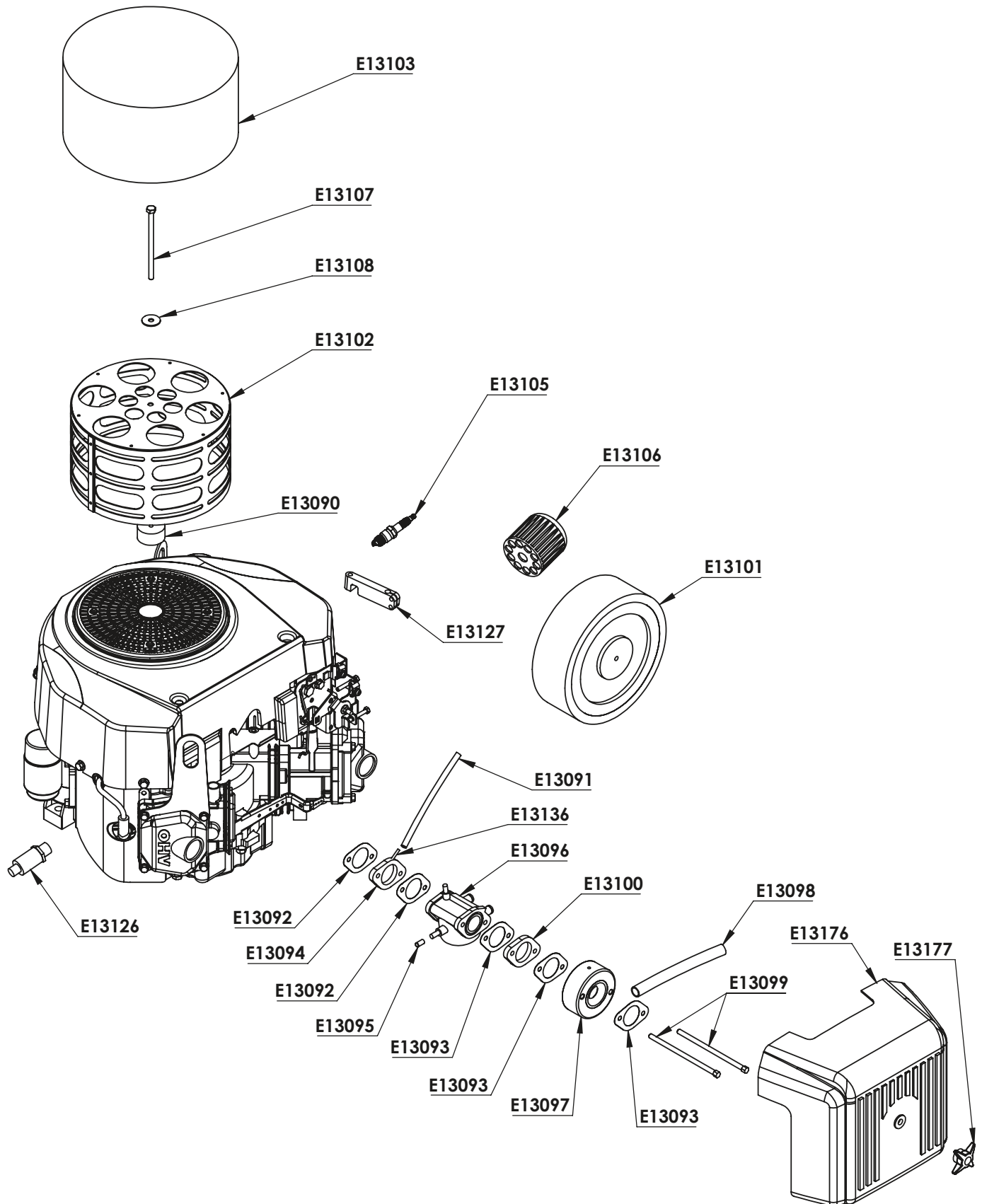


# ENGINE POWER SYSTEM PARTS LISTING

| Part#  | Description                        | Qty. |
|--------|------------------------------------|------|
| E13075 | Engine, 22HP, Complete             | 1    |
| E13076 | Clamp, Muffler                     | 1    |
| E13077 | Muffler, 22HP                      | 1    |
| E13078 | Manifold, Vertical                 | 1    |
| E13080 | Spacer, Clutch                     | 1    |
| E13082 | Battery, 12V                       | 1    |
| E13083 | Battery Cable Assembly             | 1    |
| E13084 | Screw, Hex Head, 5/16"-18 x 1-3/4" | 5    |
| E13085 | Washer, Split Lock, 5/16"          | 4    |
| E13086 | Nut, Nyloc, 5/16"-18               | 5    |
| E13087 | Nut, Hex, 8mm x 1.25               | 4    |

| Part#  | Description                        | Qty. |
|--------|------------------------------------|------|
| E13088 | Centrifugal Clutch                 | 1    |
| E13089 | Spacer, Muffler, Aluminum          | 1    |
| E13137 | Washer, Clutch                     | 1    |
| E13148 | Screw, Hex Head, 7/16"-20 x 1-1/4" | 1    |
| E13168 | Hose, Oil Drain, 18"               | 1    |
| E13169 | Clamp, Oil Drain Pinch             | 1    |
| E13170 | Clamp, Hose, Self Tightening       | 1    |
| E13171 | Key                                | 1    |
| E13175 | Gasket, Manifold                   | 2    |
| E81062 | Washer, Flat, 5/16", Zinc          | 10   |
| E88550 | Tank, Propane                      | 1    |

# ENGINE AND CARBURETOR

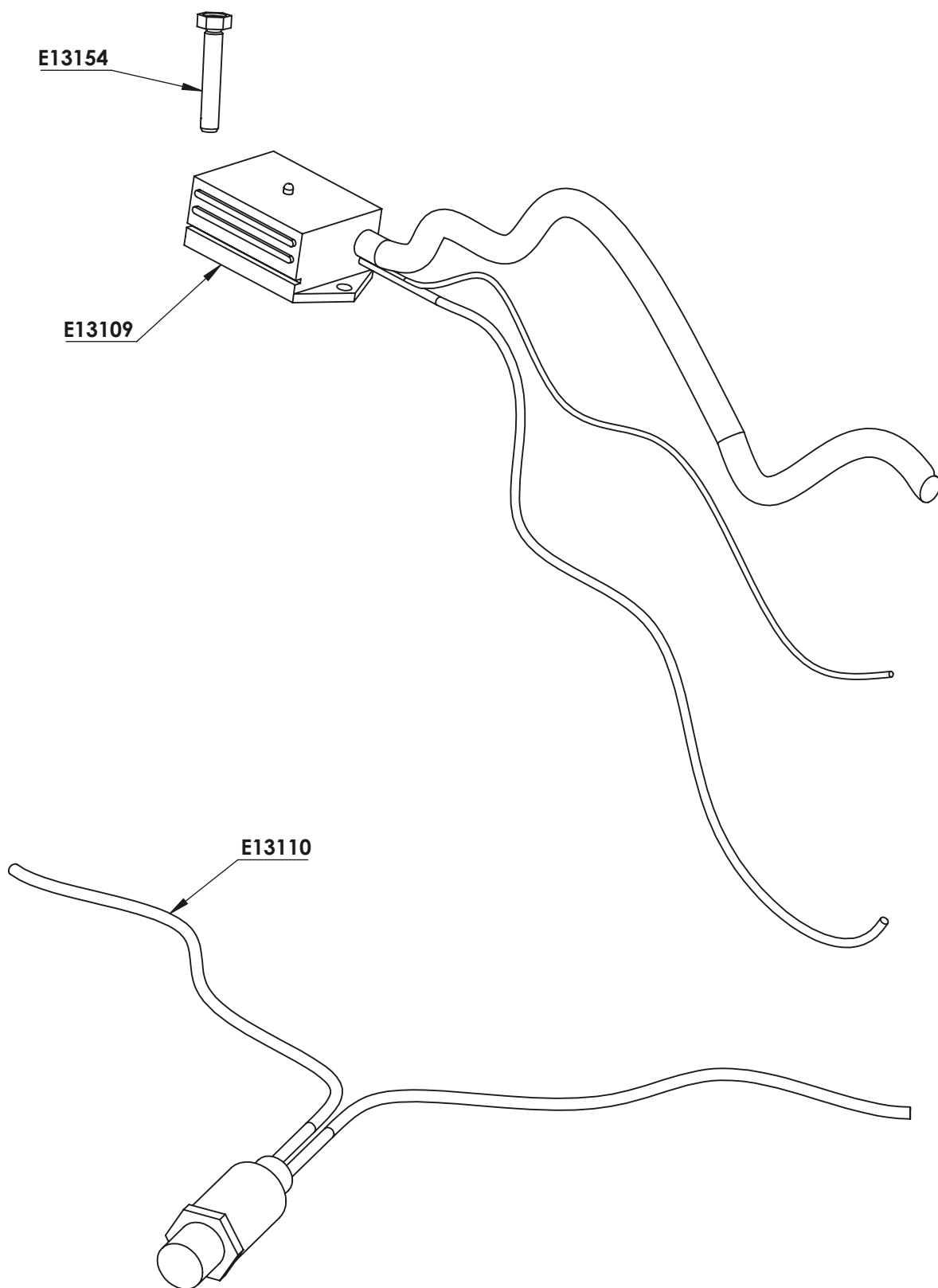


# ENGINE AND CARBURETOR PARTS LISTING

| Part#  | Description                     | Qty. |
|--------|---------------------------------|------|
| E13090 | Support, Recoil Cage            | 1    |
| E13091 | Hose, Vacuum, 39"               | 1    |
| E13092 | Gasket, Insulator               | 2    |
| E13093 | Gasket, Air Cleaner             | 3    |
| E13094 | Insulator, w/ Vacuum Tube Port  | 1    |
| E13095 | Cap, Rubber                     | 1    |
| E13096 | Carburetor Assembly, 22HP       | 1    |
| E13097 | Fuel Load Block                 | 1    |
| E13098 | Hose, Fuel, 40"                 | 1    |
| E13099 | Screw, M6 x 130                 | 2    |
| E13100 | Spacer                          | 1    |
| E13101 | Air Cleaner, w/ Foam Pre-Filter | 1    |

| Part#  | Description                       | Qty. |
|--------|-----------------------------------|------|
| E13102 | Support, Bonnet Filter            | 1    |
| E13103 | Filter, Foam Recoil               | 1    |
| E13105 | Spark Plug, BPR4EY                | 2    |
| E13106 | Filter, Oil                       | 1    |
| E13107 | Screw, Hex Head, 1/4"-20 x 4-1/2" | 1    |
| E13108 | Washer, Fender, 1/4" ID, 1" OD    | 1    |
| E13126 | Valve, Oil Drain                  | 1    |
| E13127 | Clamp, Throttle Cable             | 1    |
| E13136 | Tube, Vacuum                      | 1    |
| E13176 | Cover, Air Filter                 | 1    |
| E13177 | Nut, Wing                         | 1    |

## EMISSION SHUT DOWN



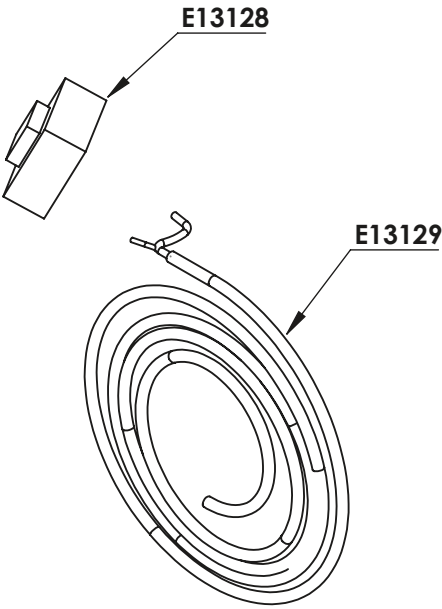


## EMISSION SHUT DOWN PARTS LISTING

| Part#  | Description                  | Qty. |
|--------|------------------------------|------|
| E13109 | Emission Warning, (Just Box) | 1    |
| E13110 | Oxygen Sensor (Only)         | 1    |

| Part#  | Description                       | Qty. |
|--------|-----------------------------------|------|
| E13154 | Screw, Phillips Head, 6-32 x 5/8" | 2    |
| E13111 | Emission Shut Down, Complete      | 1    |

# SOLUTION SWITCH

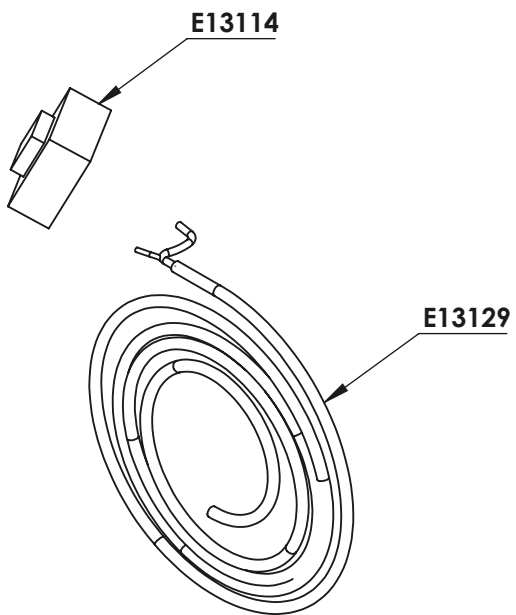


## SOLUTION SWITCH PARTS LISTING

| Part#  | Description                            | Qty. |
|--------|--|------|
| E13128 | Switch, Solution On/Off, (Switch Only) | 1    |

| Part#  | Description   | Qty. |
|--------|---------------|------|
| E13129 | Cable, Coiled | 1    |

## ENGINE SHUT DOWN SWITCH

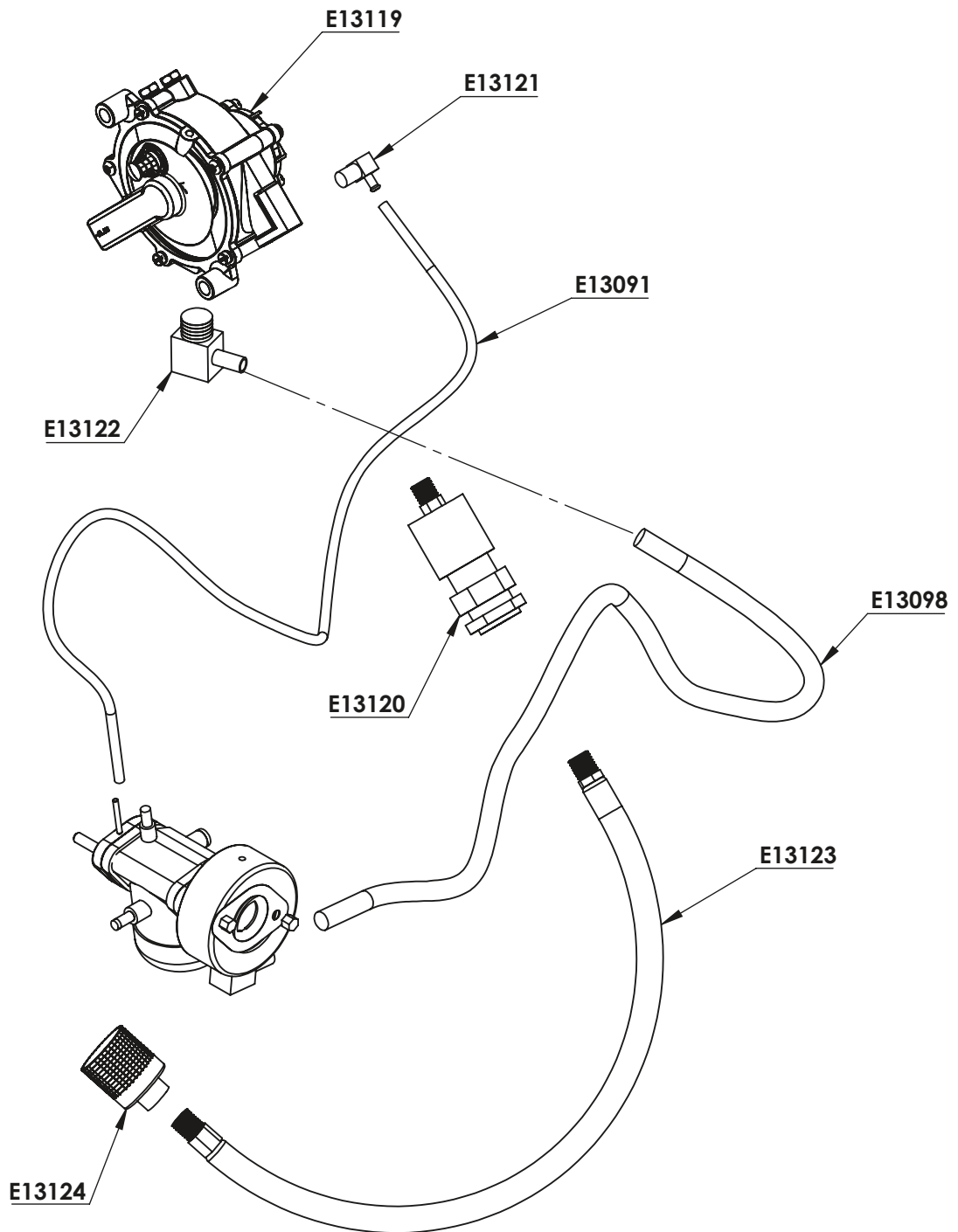


## ENGINE SHUT DOWN SWITCH PARTS LISTING

| Part#  | Description                             | Qty. |
|--------|---|------|
| E13114 | Switch, Engine Shut down, (Switch Only) | 1    |

| Part#  | Description   | Qty. |
|--------|---------------|------|
| E13129 | Cable, Coiled | 1    |

# FUEL REGULATION



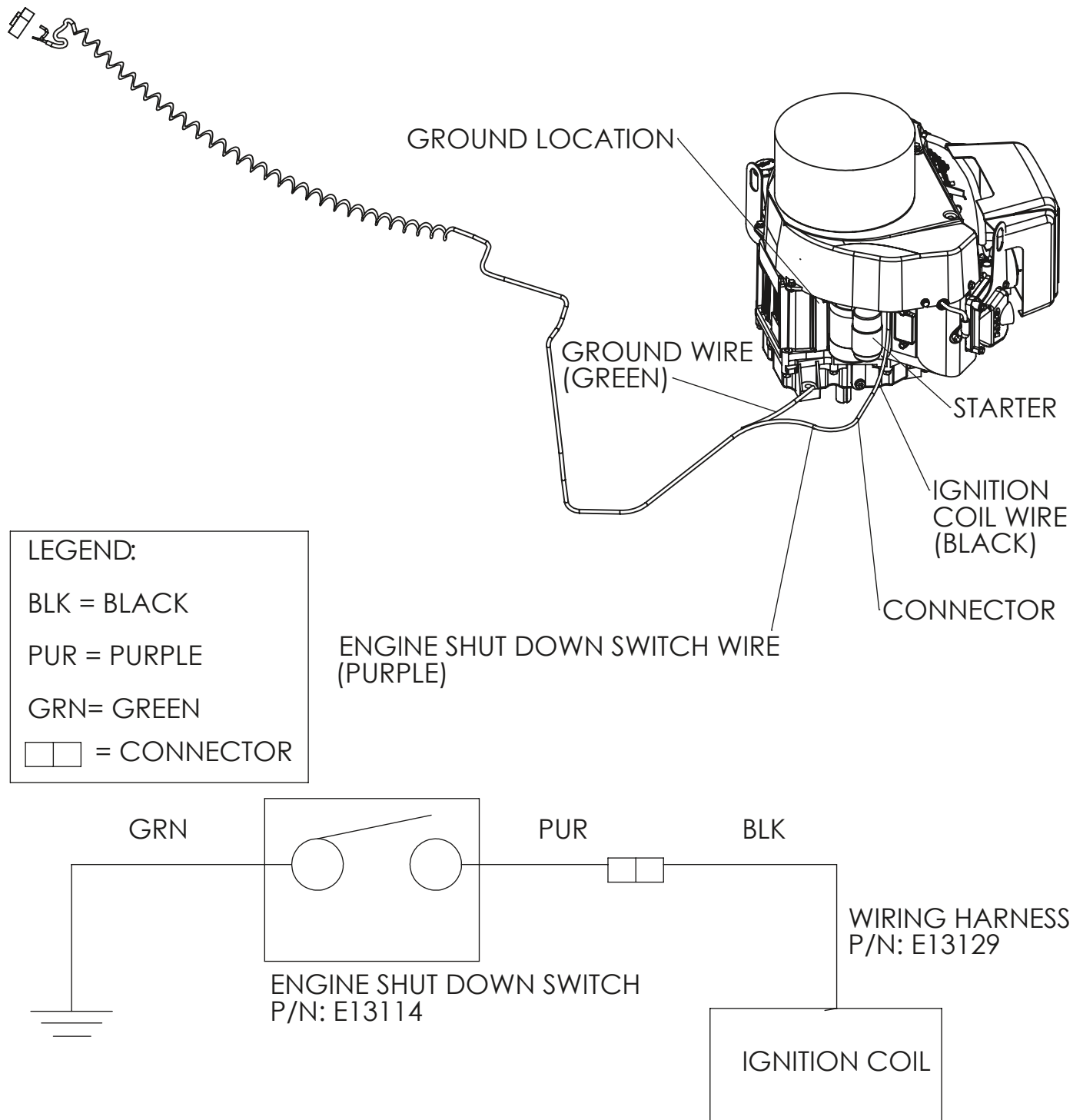


## FUEL REGULATION PARTS LISTING

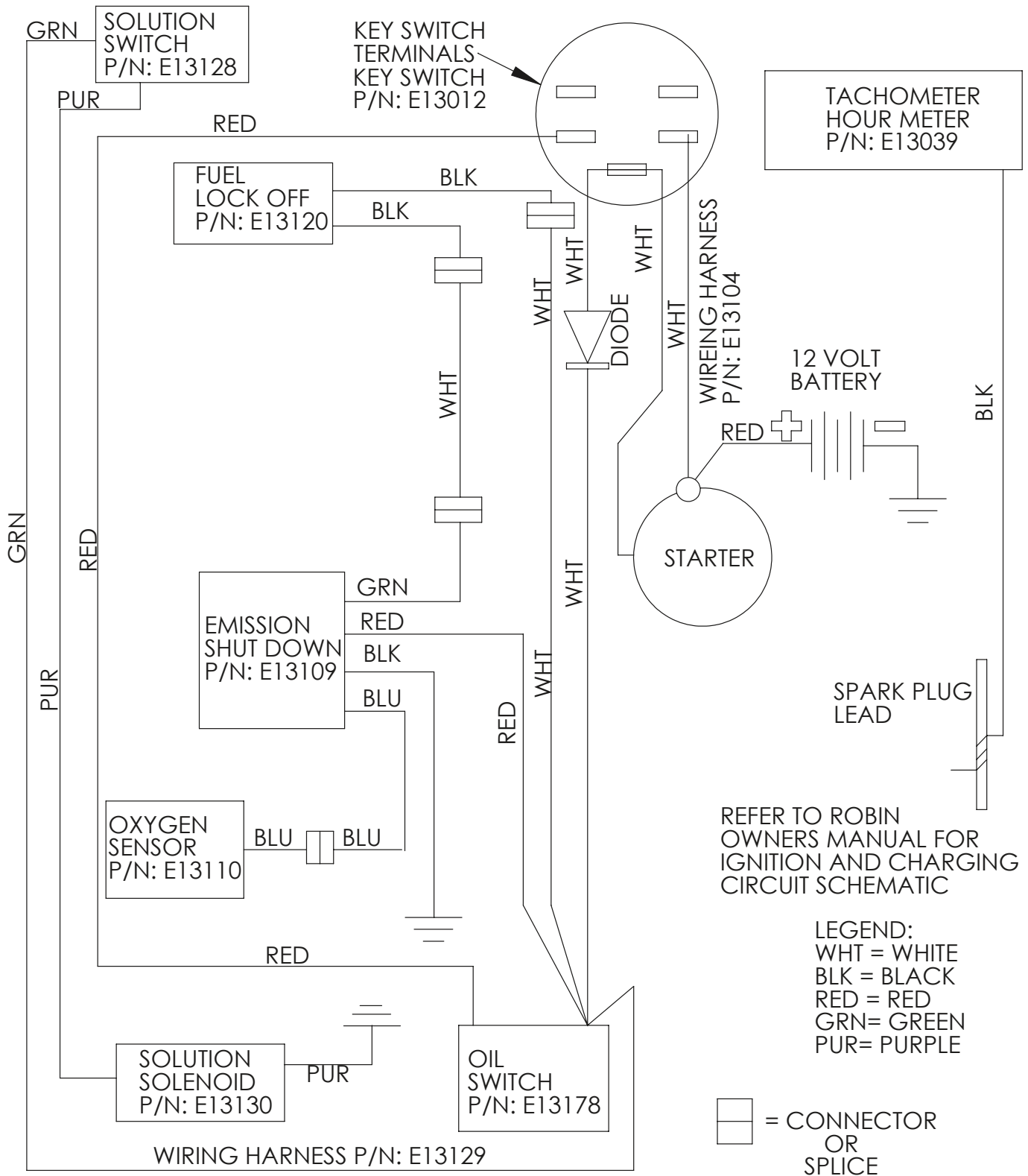
| <b>Part#</b> | <b>Description</b>    | <b>Qty.</b> |
|--------------|-----------------------|-------------|
| E13091       | Hose, Vacuum, 39"     | 1           |
| E13098       | Hose, Fuel, 40"       | 1           |
| E13119       | Regulator, 22HP       | 1           |
| E13120       | Fuel Lock with Filter | 1           |

| <b>Part#</b> | <b>Description</b>                           | <b>Qty.</b> |
|--------------|--|-------------|
| E13121       | Fitting, Elbow, 3/16" Male Thread, 1/8" Barb | 1           |
| E13122       | Fitting, Elbow, 3/8" Male Thread, 3/8" Barb  | 1           |
| E13123       | Hose, LP Tank to Regulator                   | 1           |
| E13124       | Coupling, Quick                              | 1           |

# ENGINE SHUT DOWN WIRING



# ELECTRICAL WIRING DIAGRAM



# EMISSION CONTROL WARRANTY STATEMENT

## YOUR WARRANTY RIGHTS AND OBLIGATIONS

The California Air Resources Board and Betco Corporation are pleased to explain the emissions control system warranty on your small off-road engine (SORE). In California and the other 49 States, new SORE must be designed, built and equipped to meet stringent anti-smog standards. Betco Corporation must warrant the emission control system on your SORE for the period of time listed below provided there has been no abuse, neglect or improper maintenance of your SORE.

Your emission control system may include parts such as the carburetor, fuel-injection system, the ignition system, catalytic converter, fuel tanks, fuel lines, fuel caps, valves, canisters, filters, vapor hoses, clamps, connectors, and other associated emission-related components.

Where a warrantable condition exists, Betco Corporation will repair your SORE at no cost to you including diagnosis, parts and labor.

## MANUFACTURER'S WARRANTY COVERAGE

The emission control system is warranted for two years. If any emission-related part on your equipment is defective, the part will be repaired or replaced by Betco Corporation.

## OWNER'S WARRANTY RESPONSIBILITIES

As the small off-road engine (SORE) owner, you are responsible for the performance of the required maintenance listed in your owner's manual. Betco Corporation recommends that you retain all receipts covering maintenance of your SORE engine, but Betco Corporation cannot deny warranty solely for the lack of receipts or for your failure to ensure the performance of all scheduled maintenance.

As the SORE owner you should however be aware that Betco Corporation may deny your warranty if your SORE or its part has failed due to abuse, neglect, improper maintenance or unapproved modification.

You are responsible for presenting your utility equipment engine to a Betco Corporation distribution center as soon as the problem exists. The warranty repairs should be completed within a reasonable amount of time, not to exceed 30 days. If you have any questions regarding your warranty rights and responsibilities, you should contact Betco Corporation at 1-888-GO-BETCO (1-888-462-3826).

**Betco Corporation**  
**1001 Brown Ave.**  
**P.O. Box 3127**  
**Toledo, Ohio 43607**  
**USA**

## GENERAL EMISSIONS WARRANTY COVERAGE

Betco Corporation warrants to the ultimate purchaser and each subsequent purchaser that the equipment is designed, built and equipped so as to conform with all applicable regulations; and free from defects in materials and workmanship that cause the failure of a warranted part to be identical in all material respects to that part as described in Betco Corporation's application for certification.

The warranty period begins on the date the equipment is delivered to an ultimate purchaser or first placed into service. The warranty period is two years.

Subject to certain conditions and exclusions as stated below, the warranty on emission-related parts is as follows:

1. Any warranted part that is not scheduled for replacement as required maintenance in the written instructions supplied, is warranted for the warranty period stated above. If the part fails during the period of warranty coverage, the part will be repaired or replaced by Betco Corporation according to subsection (4) below. Any such part repaired or replaced under warranty will be warranted for the remainder of the period.
2. Any warranted part that is scheduled only for regular inspection in the written instructions supplied is warranted for the warranty period stated above. Any such part repaired or replaced under warranty will be warranted for the remaining warranty period.

# EMISSION CONTROL WARRANTY STATEMENT

3. Any warranted part that is scheduled for replacement as required maintenance in the written instructions supplied is warranted for the period of time before the first scheduled replacement date for that part. If the part fails before the first scheduled replacement, the part will be repaired or replaced by Betco Corporation according to subsection (4) below. Any such part repaired or replaced under warranty will be warranted for the remainder of the period prior to the first scheduled replacement point for the part.
4. Repair or replacement of any warranted part under the warranty provisions herein must be performed at a warranty station at no charge to the owner.
5. Notwithstanding the provisions herein, warranty services or repairs will be provided at all of our distribution centers that are franchised to service the subject engines or equipment.
6. The SORE owner will not be charged for diagnostic labor that is directly associated with diagnosis of a defective, emission-related warranted part, provided that such diagnostic work is performed at a warranty station.
7. Betco Corporation is liable for damages to other engine or equipment components proximately caused by a failure under warranty of any warranted part.
8. Throughout the SORE warranty period stated above, Betco Corporation will maintain a supply of warranted parts sufficient to meet the expected demand for such parts.
9. Any replacement part may be used in the performance of any warranty maintenance or repairs and must be provided without charge to the owner. Such use will not reduce the warranty obligations of Betco Corporation.
10. Add-on or modified parts that are not exempted by the Air Resources Board may not be used. The use of any non-exempted add-on or modified parts by the ultimate purchaser will be grounds for disallowing a warranty claims. Betco Corporation will not be liable to warrant failures of warranted parts caused by the use of a non-exempted add-on or modified part.

## WARRANTED PARTS

The repair or replacement of any warranted part otherwise eligible for warranty coverage may be excluded from such warranty coverage if Betco Corporation demonstrates that the SORE has been abused, neglected, or improperly maintained, and that such abuse, neglect, or improper maintenance was the direct cause of the need for repair or replacement of the part. That notwithstanding, any adjustment of a component that has a factory installed, and properly operating, adjustment limiting device is still eligible for warranty coverage. The following emission warranty parts are covered:

1. Fuel system: carburetor, pressure regulator, and fuel lock off
2. Ignition system: spark plug, ignition coil assembly, and voltage regulator
3. Intake system: intake manifold and air filter
4. Exhaust system: exhaust manifold and catalytic converter
5. Miscellaneous items used in above systems: hoses, connectors, and assemblies.





# BETCO US WARRANTY POLICY

## 10 year coverage

Subject to the conditions stated below, Betco warrants parts and labor on rotationally molded polyethylene tanks/ housings and injection molded vacuum head assemblies to be free from defects in materials and workmanship for a period of ten years to the original purchaser.

## 3 Year Coverage

Subject to the conditions stated below, Betco warrants parts and labor on all other Betco components to be free from defects in materials and workmanship for a period of three years to the original purchaser.

- Lithium Ion battery for MotoMop™ is a full 3 years

## 1 Year Coverage

Subject to the conditions stated below, Betco offers a limited warranty on parts and labor on the following equipment: parts and accessories to be free from defects in materials and workmanship for a period of one year to the original purchaser.

- PowerUp™ 14 Upright Vacuum: #E29990-00
- Bac Pac Lite Vacuum: #85903-00
- FiberPRO® Floor Dryer: #85507-00
- WORKMAN™ Series Vacuums: #85024-00, #85025-00, #83012-00, #85027-00
- All Tools and Accessories
- All Battery Chargers
- Deep cycle batteries are pro-rated for 1 year

### **Allowable Travel Time Warranty Reimbursement:**

Eligible equipment: All battery and propane powered equipment products. Warranty period: 90 days from date of sale to the original purchaser. A maximum 180 mile round trip at 50 cents per mile will be allowed for warranty consideration.

### **Propane Machine Warranty:**

Kawasaki/Subaru engines are warranted by Kawasaki/Subaru for a period of 2 years against manufacturer defects. All other components (except wear items)\* are warranted by Betco for a period of 3 years.

**\*Wear Items exempt from Warranty consideration include but may not be limited to: power cords, transport wheels, vacuum bags, belts, squeegee blades, pad drivers, clutch plates, handle grips, filters, screens, throttle cables, brushes and carbon brushes.**

Subject to the conditions and exceptions stated in this warranty, Betco warrants the Betco products to be free from defects in material and workmanship, under normal use and service, for the periods listed under the warranty policy to the original purchaser. At any time during the warranty period, Betco will furnish replacement parts for the Betco parts to the original purchaser. Such parts will be furnished and charged including transportation costs, to the original owner through any Betco authorized Service Distributor. If the original part is returned within the warranty policy period from date of delivery for inspection by Betco and is found to be defective the owner will be credited for the cost of replacement parts plus shipping and handling. Replacement parts that have become defective through wear or abuse are not included in this warranty.

This warranty does not apply to damage or defect caused by accident, misuse, Negligence, fire, or to any Betco product which has been serviced or repaired by other than an authorized Betco Service Distributor or Betco factory personnel. This warranty is void if products are used for any purpose other than that which was intended. There are no other warranties expressed or implied. In no event shall Betco be liable for incidental or consequential damages or any damage to person or property. (Please note some states do not allow the exclusion or limitations for incidental and consequential damages).

