



Professional Performance, Everyday.

**Crete Rx™ Terrazzo Program**

# What is Terrazzo Flooring?

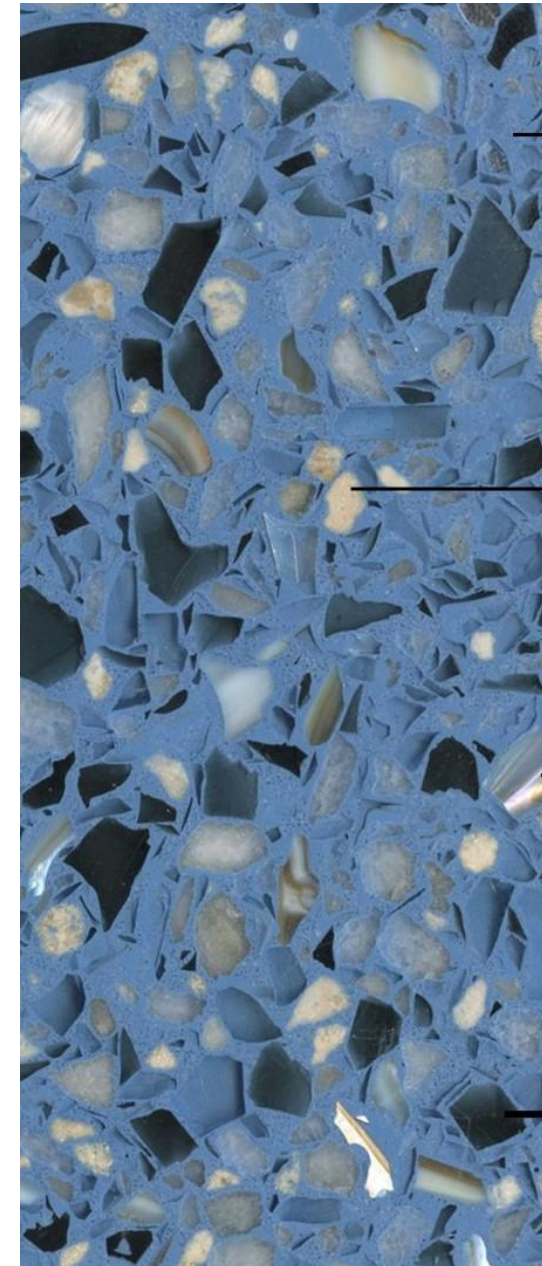
- Terrazzo is defined as a composite material poured in place or precast, consisting of marble chips and/or other aggregates combined within a binder material, which is ground and polished to a beautiful finish.
- Terrazzo covers a limitless array of colors, and is known for being durable, sustainable, and flexible enough to accommodate designs from very simple and classic to extremely intricate and complex. From the royal palaces and serene bath houses of ancient times to today's international airports, hospitals, and schools, terrazzo is a flooring canvas with infinite possibilities.





# What is Terrazzo Flooring made of?

- Terrazzo consists of chips of marble, granite, quartz, glass, shell or other suitable materials. Terrazzo uses either a cement or epoxy matrix as the binder.
- Metal strips divide sections, make color transitions, design decorative patterns or logos and allow for movement or crack mitigation. Divider strips are made from aluminum (epoxy terrazzo only), zinc, brass or plastic but never stainless steel.



## EPOXY RESIN

Combined with terrazzo aggregates, the epoxy resin can be tinted to match any color.



## MARBLE CHIPS

Terrazzo surfaces can include a mixture of marble or granite chips. Shown here is Coral.



## SHELL CHIPS

Regional seashells can be included in a terrazzo design, with Mother of Pearl reflecting off lighting.



## GLASS CHIPS

Terrazzo can use recycled glass chips which are often vibrant in many different colors, making the chips stand out.

# What is Cementitious Terrazzo Flooring?

- Cementitious Terrazzo uses a cement matrix and describes multiple terrazzo systems including sand cushion, bonded, monolithic, polyacrylate, and rustic.
- These floors use a cement-based mix with the aggregate (chips) to form the terrazzo top. They are often thicker and heavier than an epoxy system.
- They offer a wide color palette, choices are slightly less than epoxy terrazzo, but create beautiful earthy tones and some can be used outdoors.





# What is Epoxy Terrazzo flooring?

- An Epoxy Resin Matrix is a 2-component resin which bonds directly to the concrete slab.
- The advantages of this material over cementitious terrazzo include an almost endless color selection.
- Other advantages include lighter weight, higher strengths with PSI rates of 10,000 +, faster installations, impermeable finish and less susceptible to cracking.
- A disadvantage of epoxy terrazzo that it is only for interior and not exterior applications.
- Epoxy terrazzo topping is not vapor-permeable so moisture mitigations products may be needed. If an old building does not have an active vapor barrier under the slab on grade, epoxy terrazzo should not be installed.

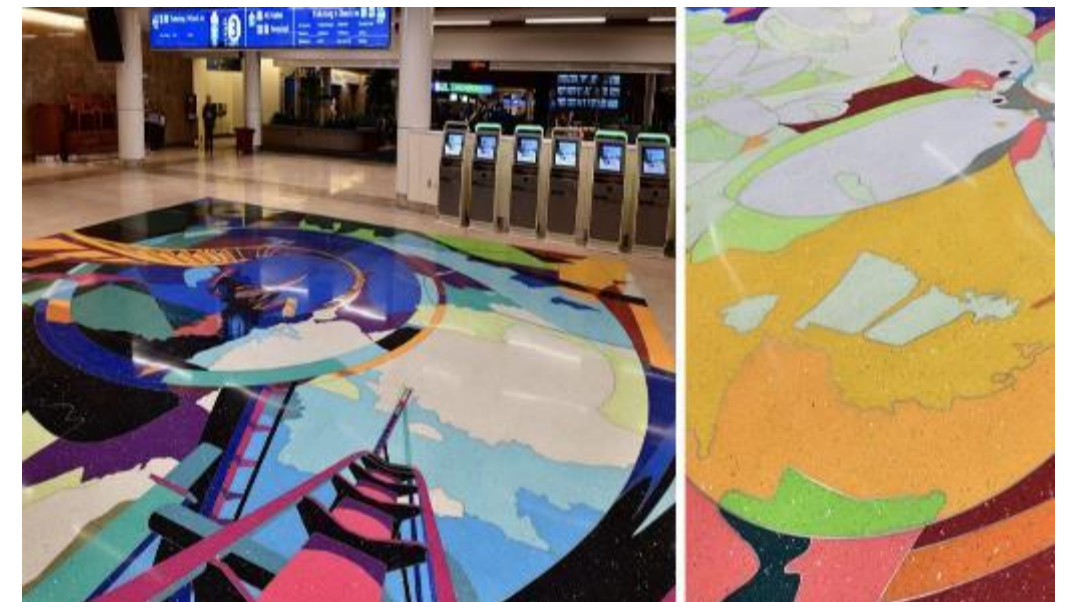




# What to choose: Epoxy or Cementitious:

## Why would I choose one over the other? If you...

- Want bright, brilliant, limitless colors, use epoxy terrazzo
- Want a thin-set floor, use epoxy terrazzo
- Want a chemical-resistant floor, use epoxy terrazzo
- Want to match or duplicate a classic space, use cement terrazzo
- Have concerns with moisture vapor transmission, use cement terrazzo
- Want terrazzo outdoors, use cement terrazzo

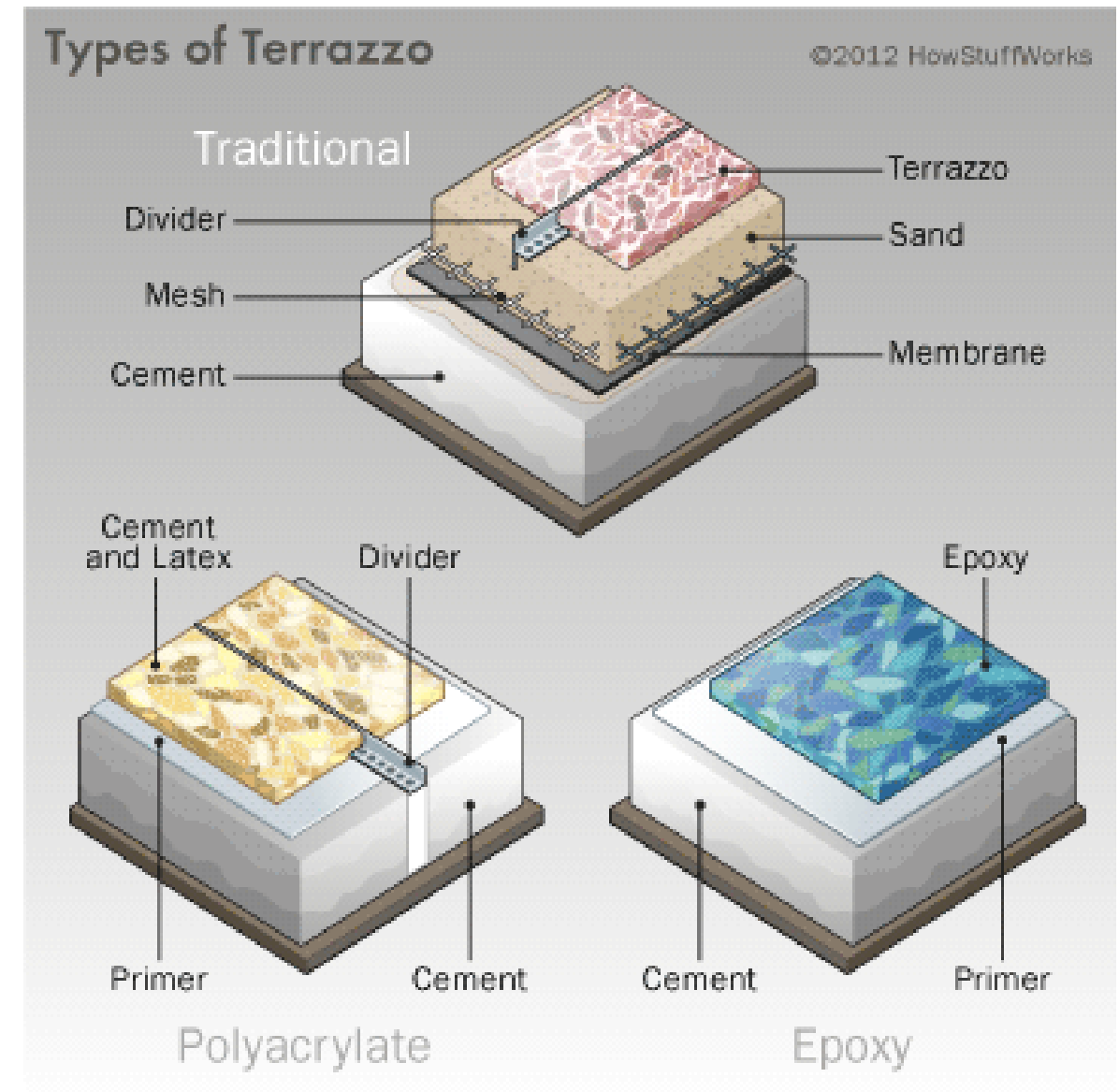


# How do I know if it is Epoxy or Cementitious:

**Let's start with some questions that will give you important clues to get us started:**

- Inside (either) or outside (cementitious)
- First floor of building (either) or higher floor in building (higher the floor, the higher the probability that its epoxy)
- Was the floor installed pre 1960's (Cementitious)
- Vibrant colors: Dark Blue or Pinks, Deep Reds, or fluorescent colors like Lime Green (Epoxy)
- Extreme or intricate floor design? (Epoxy)
- Natural cracks or faults in the surface? (Cementitious)

**How do I know for sure ... Acid Reactivity Test!**





# Acid reactivity test:

You will need to complete the following:

- Find an inconspicuous area to complete the test
- Strip a small area (6 inch x 6 inch) of the floor using Extreme (removes conventional finishes/sealers) or LiquiStrip (removes semi-permanent guards) to insure any and all surface coating(s) are removed.
- Clean area with wet towel and dry to touch. Apply a few drops of mild acid bowl cleaner (Stix) to the area.
  - IF you see a reaction on the floor with bubbles or fizz, the acid is reacting with the cement in the floor. This is a Cementitious floor.
  - IF you do not see any reaction on the floor, this is an Epoxy floor. Epoxy is a substrate that does not react with acids
    - NOTE example photos of the different reactions





# Recommendations for Epoxy Floors: High Gloss

## Epoxy Terrazzo Floor recommendations: High Gloss

- Strip Floor to remove all coating (if required)
- Follow all directions for use of Reset tool (if required)
- Follow all directions for use of Honing tool.
- Clean the floor with Densiclean™ and allow to dry.
  - (No need to complete densifier step because this is not cementitious)
- Follow all directions and apply two coats of LiquiShield.
- Burnish floor with High Speed or Propane burnisher and CreteRx™ SI Burnish pads. (This final process will create heat and cure the LiquiShield guard)
- Daily cleaning with the use of Densiclean™ and CreteRx SI Pads.



# Recommendations for Epoxy Floors: Semi-Gloss

## Epoxy Terrazzo Floor Alternate Method (semi-gloss)

- Strip Floor to remove all coating (if required)
- Follow all directions for use of Reset tool (if required)
- Follow all directions for use of Honing tool.
- Clean the floor with Densiclean™
  - (No need to complete densifier step because this is not cementitious)
- Apply fresh solution of Densiclean™ to floor and leave the floor WET.
- WET Polish the floor using the CreteRx™ Polish Tools.
  - Note: This procedure will give the floor mild gloss but using these tools wet will not cause burn marks on the epoxy floor
- Clean the floor with Densiclean™ and allow to dry.
- Follow directions and apply Stain Defense™
- Burnish floor with High Speed or Propane burnisher and CreteRx™ SI Burnish pads.
- Daily cleaning with the use of Densiclean™ and CreteRx™ SI Pads.





# Recommendation for Cementitious Floors: High Gloss

## Cementitious Terrazzo Floor recommendations: High Gloss

- Strip Floor to remove all coating (if required)
- Follow all directions for use of Reset tool (if required)
- Follow all directions for use of Honing tool.
- Follow all directions apply Densifier.
- Clean the floor thoroughly with Densiclean™ and allow to dry.
- Follow all directions for use of Polishing tool.
- Clean the floor thoroughly and allow to dry.
- Follow all directions and apply two coats of LiquiShield.
- Burnish floor with High Speed or Propane burnisher and CreteRx™ SI Burnish pads. (This process will create heat and cure the LiquiShield guard)
- Daily cleaning with the use of Densiclean™ and CreteRx™ SI Pads.



# Cementitious Floors: Gloss and No Coating

## Cementitious Terrazzo Floor : Gloss with No coating

- Strip Floor to remove all coating (if required)
- Follow all directions for use of Reset tool (if required)
- Follow all directions for use of Honing tool.
- Follow all directions and Densify the floor using Betco Densifier following the use of the Honing tool.
- Clean the floor thoroughly with Densiclean™ and allow to dry.
- Follow all directions for use of Polishing tool.
- Clean the floor thoroughly and allow to dry.
- Apply 1 coat of Stain Defense and allow to dry.
- Burnish floor with High Speed burnisher or Propane burnisher and CreteRx™ SI Burnish pads.
- Daily cleaning with Densiclean™ and CreteRx™ SI Pads.



See Next Slide for precautions when following these steps on terrazzo



# Cementitious Floors: High Gloss and No Coating



Color Bleed during the dry polish step that can transfer color from Dark to Light. This can occur on floors with topical dyes.

## Precautions



Divider strips can bleed color as they are polished dry. Divider strips are made from aluminum (epoxy terrazzo only), zinc, brass or plastic.

If either of these situations occur, STOP, clean up the area, skip the polish step and follow the directions for LiquiShield™ to complete the polish work.



# LiquiShield™ Guard

## LiquiShield™ Concrete Guard



167904 LiquiShield 4 x 1 Gal. Bottles  
167955 LiquiShield 55 Gal. Drum

LiquiShield is a water-based guard formulated to improve gloss while adding substantial protection against stain and etch on any cured concrete or terrazzo floor.

- Just two coats needed for excellent stain resistance
- No need for floor finish or conventional coatings
- Resists scuffs, black marks, and soil
- Will not peel, flake, or discolor
- Low odor and easy to apply
- Breathable VOC compliant coating

LiquiShield performs best in these applications:

- Floors that require heavy stain protection
- Providing gloss and protection to non-polished concrete floors Terrazzo floors that cannot be polished due to bleed off from divider strips, topical dyes that bleed when dry polished, or non-cementitious composition
- Avoiding tedious edge work





# To Coat or Not to Coat

## Quick Reference Guide

Characteristics	LiquiShield	CreteRx (no coating)
Initial Gloss rating	Excellent	Excellent
Clarity of Image	Good	Excellent
Wear and durability in average traffic	Good	Excellent
Wear and durability in heavy traffic	Fair	Excellent
Scuff and Scratch resistant rating	Good	Excellent
Stain and Etch protection rating	Excellent	Good
Annual recoat maintenance required	Yes	No

LiquiShield™ performs best in these applications:

- Floors that require heavy stain protection - like cafeterias.

- Providing gloss and protection to non-polished concrete floors.

- LiquiShield is also the solution for terrazzo floors that cannot be polished due to:

  - Bleed off from divider strips (zinc, aluminum, brass, or PVC)

  - Topical dyes that bleed when dry polished

  - Non-cementitious terrazzo

- LiquiShield is the fastest and easiest solution to avoid tedious edge work!

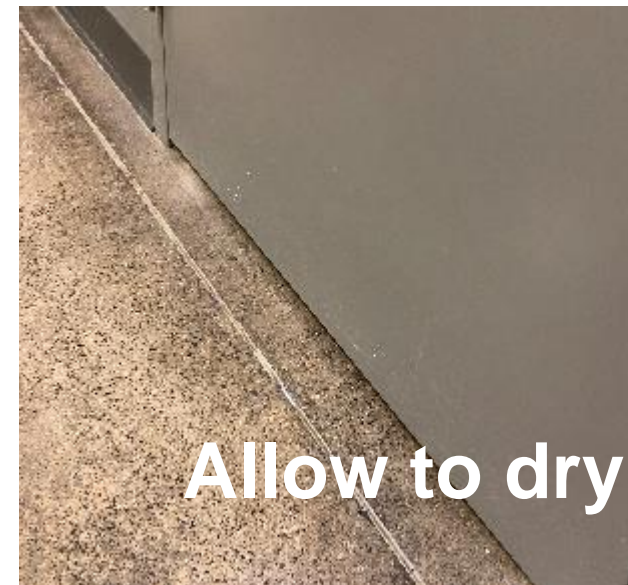
  - Polish the floor using the Betco CreteRx system

  - Apply LiquiShield along the edge 3-4 inches wide....it will shine like the rest of the floor! With little-to-no wear at the edges.

- LiquiShield will last for many years using the Betco CreteRx daily cleaning program



# Blending edges with the use of LiquiShield™



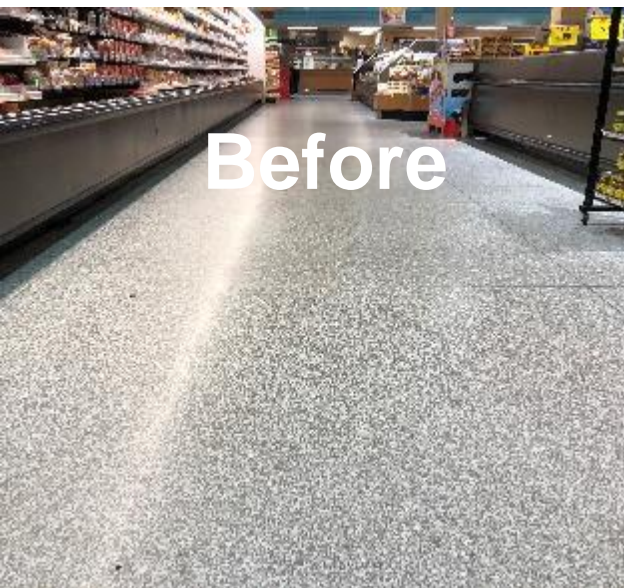
- Apply LiquiShield™ along the edge 3-4 inches wide, allow to dry, and burnish to a high gloss.
- Excellent results without the need to grind and polish all edges.

Note: This may require 2+ coats to fully blend the areas.





# Removal of old Guards without a stripper



To remove old guard on a floor WITHOUT the use of a chemical stripper like LiquiStrip, follow these instructions:

- Apply Densiclean™ liberally to the floor.
- Run CreteRx™ Polish tools over wet floor with the CP30/CM30 two complete passes to fully remove guard.
- Clean area with auto scrubber and Densiclean™
- Complete the process by following normal procedures use of Polish tools dry to complete the job.

No Stripping required!

Note: Polish tool coverage will drop to less than 5,000 sq./ft. coverage when used wet



# Questions?



For more information, click here: [Crete Rx Polished Concrete & Terrazzo Maintenance System.](#)

