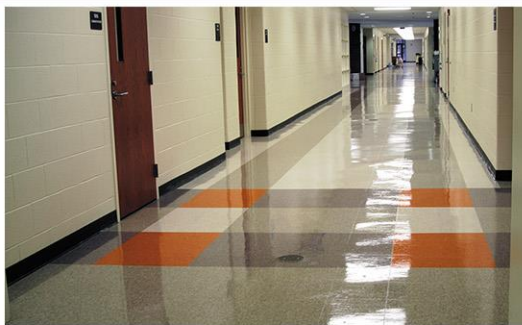


SLIP AND FALL PREVENTION



Slip and Fall Prevention

- Falls in the workplace are the number one preventable loss type, and in public places are far and away the leading cause of injury



Cleaning Innovations That Matter.

Slip and Fall Prevention

- The average workers comp claim is \$4,000
- The average cost to defend a lawsuit is \$50,000
- The average judgment if a case is lost is \$100,000

- National Safety Council



Cleaning Innovations That Matter.

Slip and Fall Prevention

- The American Society of Testing and Materials (ASTM) is the most active organization in the development of standards for measuring slip resistance



Common Causes of Slip and Fall Accidents

- Water and other foreign substances such as oily dust mop treatments, food, liquid spills or aerosol product over-spray
- Floors that are not maintained properly
- Worn away floor finish or defects in the floor
- Foreign materials on people's shoes prior to stepping on a floor
- Improper footwear like high heels, platform shoes or slippers



Cleaning Innovations That Matter.

Steps to Avoid Slip and Falls

- Clean up spills, food, drinks or standing water immediately
- Establish and document a slip and fall program within your facility
- Practice good housekeeping by creating and maintaining good housekeeping procedures
- Establish and follow an effective floor care maintenance program and keep written record of the maintenance procedures



Cleaning Innovations That Matter.

Steps to Avoid Slip and Falls

- Post “**CAUTION**” or “**WET FLOOR**” signs warning of hazardous floor conditions
- Use walk off mats where appropriate
- Keep floors dust free
- Make routine safety inspections and record the findings



Cleaning Innovations That Matter.

Proper Spillage Cleanup Procedures

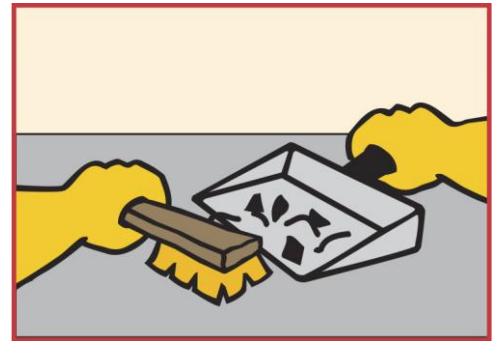
- Cordon off the area to restrict foot traffic
- Determine the correct equipment needed to clean the spill
- Wear the proper Personal Protective Equipment (PPE)
- Practice Universal Precautions when cleaning any blood or body fluid spills, or soiled materials that could contain these



Cleaning Innovations That Matter.

Proper Spillage Cleanup Procedures

- If the spill is “Dry”- sweep with a broom, collect in a dustpan and place the material in the appropriate container
- Using a clean dust mop go over the spilled area to remove any additional particulates that remain
- If the spill is “Wet” - cordon off the area, contain the spill, cleanup the spill and place caution signs
- Contain large spills with an absorbent



Cleaning Innovations That Matter.

Proper Spillage Cleanup Procedures

- Sweep all solid debris into a dustpan or shovel and place it in a suitable container
- When dealing with glass or sharp materials, always handle with care
- Make sure to ring the mop tightly to avoid excess moisture on the floor
- Allow the area to dry completely before removing any posted signs and opening the area for traffic



Cleaning Innovations That Matter.

What to Do in Case of a Slip and Fall

- First and foremost, attend to the needs of the fallen person expressing verbal concern for their well-being
- Call a supervisor for assistance and notify the appropriate authorities
- Make sure someone stays with the victim until medical personnel arrive



Cleaning Innovations That Matter.

What to Do in Case of a Slip and Fall

- Notice all body movements of the victim noting if the movements support their pain complaints
- Find out the cause of the accident
- Observe the scene and write down the information on an incident or accident report and take a picture
- Have the area cleaned following the established procedures



Cleaning Innovations That Matter.

Slip Resistance

- Slip resistance is the static coefficient of friction between a shoe and a coated floor tile
- The James Machine measures the static coefficient of friction
- **ASTM D 2047** is the most recognized test method for slip resistance in the U.S. court of law
- All Betco Floor Finishes meet or exceed **ASTM D 2047** and are therefore considered to be slip resistant



James Machine



Cleaning Innovations That Matter.

Slip Resistance

- Betco® has expert witnesses for slip/fall cases that are members of the **ASTM D-21 Committee on Polishes** as well as the **D-21.06 Slip Resistance subcommittee** that can testify in a court of law on your behalf for slip and fall accidents



SLIP AND FALL PREVENTION

- Know and understand the slip fall prevention program for your facility
- Practice caution and common sense each day and during each task

