

INSTALLATION INSTRUCTIONS

The PeroxiDraw™ Dispensing System is a locking dispensing system that allows the user to dispense Green Earth® Peroxide Cleaner for up to six different dilutions and applications safely and effectively. Pretipped to use at the right dilution. Simply hang on the wall and start using the dispenser.

1. PARTS CHECKLIST:

ITEM	DESCRIPTION	QTY.
A.	PeroxiDraw™ Assembly	1
B.	1/4" ID Vinyl Supply Tubing & Foot Valve Assembly	1
C.	Ceramic Weight	1
D.	1/2" ID X 6' Long Vinyl Outlet Tubing (For 4 GPM Station Only)	1
E.	Outlet Tubing Hanger (For 4 GPM Station Only)	1
F.	Drip Tray (For 1 GPM Station Only)	1
G.	#10 Screw & Anchor Kit Set (Total 10 Screws & 10 Anchors)	1
H.	Metering Tip Kit	1
I.	Cabinet Lock Keys	1
J.	Hinge	8

2. INSTALLATION: (Refer to Figure 1)

Note: All installations must conform with local plumbing codes and use approved backflow preventers. Pressure indicating tee is to be installed with existing faucets according to local plumbing codes in the state of Wisconsin and any other state that requires the use of a pressure indicating tee.

A. MOUNTING AND WATER SUPPLY:

Locate mounting holes on a permanent surface. Drill all of the holes into the drywall using a 1/4" diameter bit for use with the included #10 screw and anchor set. (If mounting the PeroxiDraw™ dispenser to wood and you do not plan to use the included anchors, drill 1/8" diameter holes.) Insert the anchors into drilled holes and hammer them into the wall until they are flush with face of wall. Assemble all of the #10 screws with a Phillips screwdriver into the anchors so the screw heads are sticking out of the wall approximately 1/2". Mount the PeroxiDraw™ dispenser by inserting the screw heads through the keyhole slots in the base and tighten the screws.

The water inlet is equipped with a female garden hose fitting (with strainer washer) for attaching a water supply hose. The water inlet may be removed to permit direct connection to a 3/8" NPT pipe. The unit is designed so water can be supplied to either side by interchanging the pipe plug with the pipe and female hose fitting. **Note: Apply pipe dope, hand tighten, and then turn 1-1/2 times with a wrench. DO NOT OVER TIGHTEN.**

WARNING: Do not use Teflon® tape to seal internal plastic threads as the extra thickness of the tape may cause the plastic to crack. Use a non-welding liquid sealant instead.

INSTALLATION INSTRUCTIONS

B. CHEMICAL INJECTION ADJUSTMENT:

WARNING: USE CARE WHEN HANDLING HAZARDOUS CHEMICALS.

Chemicals feed rates are controlled by metering tips that are pretipped into the selector valve barbs and the 4 GPM proportioner inlet barb. If using a different tip is desired, choose a tip from the chart below.

**TABLE 1
1 GPM FLOW RATE PROPORTIONER, 1/4" I.D. TUBING**

Metering Tip Color		
	Oz/Gal	Ratio
Tan	1.03	125-1
Orange	1.24	103-1
Turquoise	1.43	89-1
Pink	2.47	52-1
Light Blue*	3.05	42-1
Brown	3.48	37-1
Red	4.38	29-1
White	5.33	24-1
Green	6.38	20-1
Blue	6.77	19-1
Yellow	9.90	13-1
Black	15.00	9-1
Purple	24.94	5-1
Gray	35.94	4-1
No Tip	73.21	2-1

**TABLE 2
4 GPM FLOW RATE PROPORTIONER, 1/4" I.D. TUBING**

Metering Tip Color	1 cps	
	Oz/Gal	Ratio
Tan	0.33	387-1
Orange	0.42	307-1
Turquoise	0.51	251-1
Pink	0.78	165-1
Light Blue*	0.87	147-1
Brown	0.99	129-1
Red	1.37	93-1
White	1.52	84-1
Green	1.72	74-1
Blue	2.13	60-1
Yellow	3.05	42-1
Black	4.50	28-1
Purple	7.75	17-1
Gray	9.86	13-1
No Tip	19.63	7-1

NOTE:

- *Metering tip color was formerly clear
- All induction rates are base on a water pressure of 40 psi

INSTALLATION INSTRUCTIONS

C. CHEMICAL SUPPLY:

Open the bottom cabinet on the PeroxiDraw™ dispenser. Slip a ceramic weight over a chemical supply tube. Place tube into Gallon bottle of Green Earth® Peroxide Cleaner.

DRIP TRAY:

The Drip Tray is installed by simply inserting the tabs in the back of the tray into the slots in the door of the case. Push tray down to secure in place. Two-sided tape or Velcro (not included) may be used to secure drip tray to door.

D. OUTLET TUBING:

Attach one end of the 1/2" ID tubing to the proportioner outlet barb and run the other end through the hole located at the bottom of the case. Attach tubing hanger to end of tubing, to hang up when not in use. **NOTE: Do not force outlet tubing onto the larger barbs on the proportioner.**

3. OPERATION:

The PeroxiDraw™ dispenser is now ready for use. Depressing a push button will allow water to flow through the proportioner and mix a chemical water solution at the desired ratio. The buttons are spring loaded to prevent accidental overflow if unattended, but may be converted to locking buttons by cutting off the tab at the notch (See Figure 2). Pushing the button and turning it a 1/4 turn clockwise at the end of its travel allows the valve to lock on. This makes it unnecessary for the attendant to hold the button while filling large containers. Turning the button in a counterclockwise direction will release it, allowing the valve to shut off.

4. SERVICING:

Caution: Turn off water supply before servicing.

A. Proportioner fails to draw chemical:

- 1) Pinch outlet tube to create back pressure, which will cause unit to prime. The foot valve will keep the inlet tube primed thereafter.
- 2) Insufficient water supply pressure. 20 PSI is the minimum allowable.

B. Proportioner stops drawing chemical:

- 1) Inspect foot valve for dried chemical or dirt. Soak in hot water to clean.
- 2) Proportioner metering tip clogged with dried chemical. Remove tip and try injecting in hot water. If there is no suction, remove proportioner and soak in hot water to clear interior passages.
- 3) Inspect proportioner to ensure that there are no mineral deposit build-ups on the nozzle. If so, soak proportioner body in deliming solution. (Remove all parts attached to proportioner before soaking in deliming solution.) **Note: Use care when handling hazardous chemicals.**

C. Valve Malfunction:

Check that the button moves freely in & out, bottle lever moves up and down freely (select models only) and that a "click" can be heard when the button is pushed and released, indicating that the magnet is activating the plunger properly. Remove cover. To inspect internal parts, unscrew magnet housing and carefully pull off the enclosing tube so as not to drop the plunger, kick-off spring, and spacer. Check for dirt or damage impeding plunger and kick-off spring movement. Inspect the diaphragm, making sure the two small pinholes (bleed holes) in the diaphragm convolution are clear to allow the valve to close.

Caution: When servicing unit, be sure that replacement parts have been installed according to the drawing.

NOTE: THE MAXIMUM TEMPERATURE ALLOWABLE IS 150°F (65°C). THE MAXIMUM PRESSURE ALLOWABLE IS 150 PSI (10 BAR).

INSTALLATION INSTRUCTIONS

Merchandise Returns

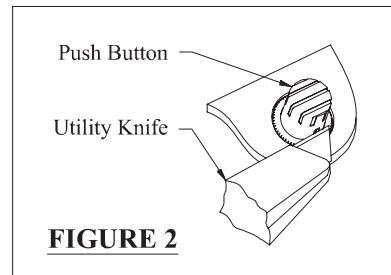
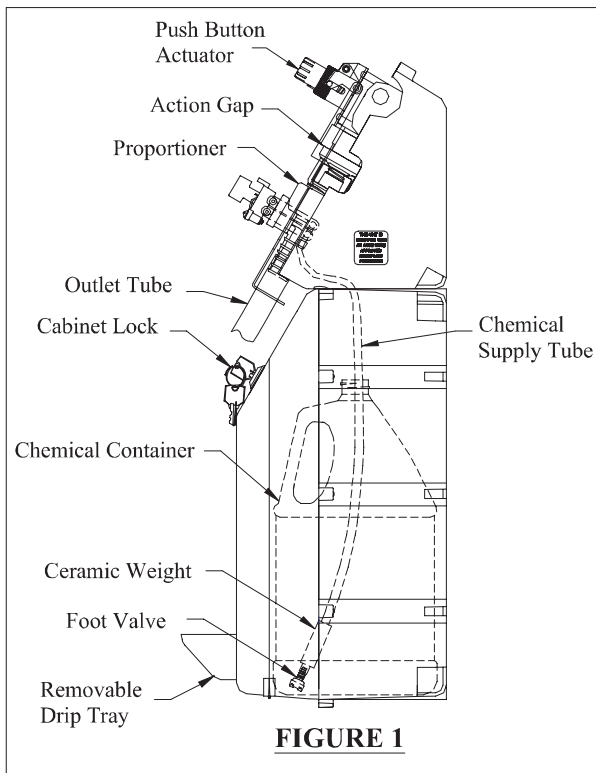
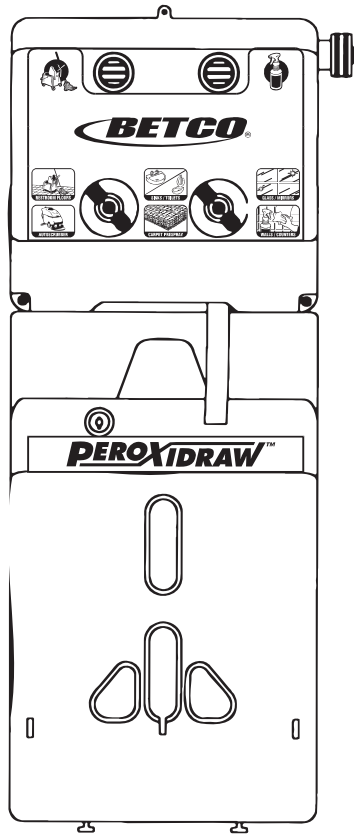
No Merchandise will be Returned for Credit Without BETCO's Written Permission. Returned Merchandise Authorization Number is Required in Advance of Return.

Product Warranty

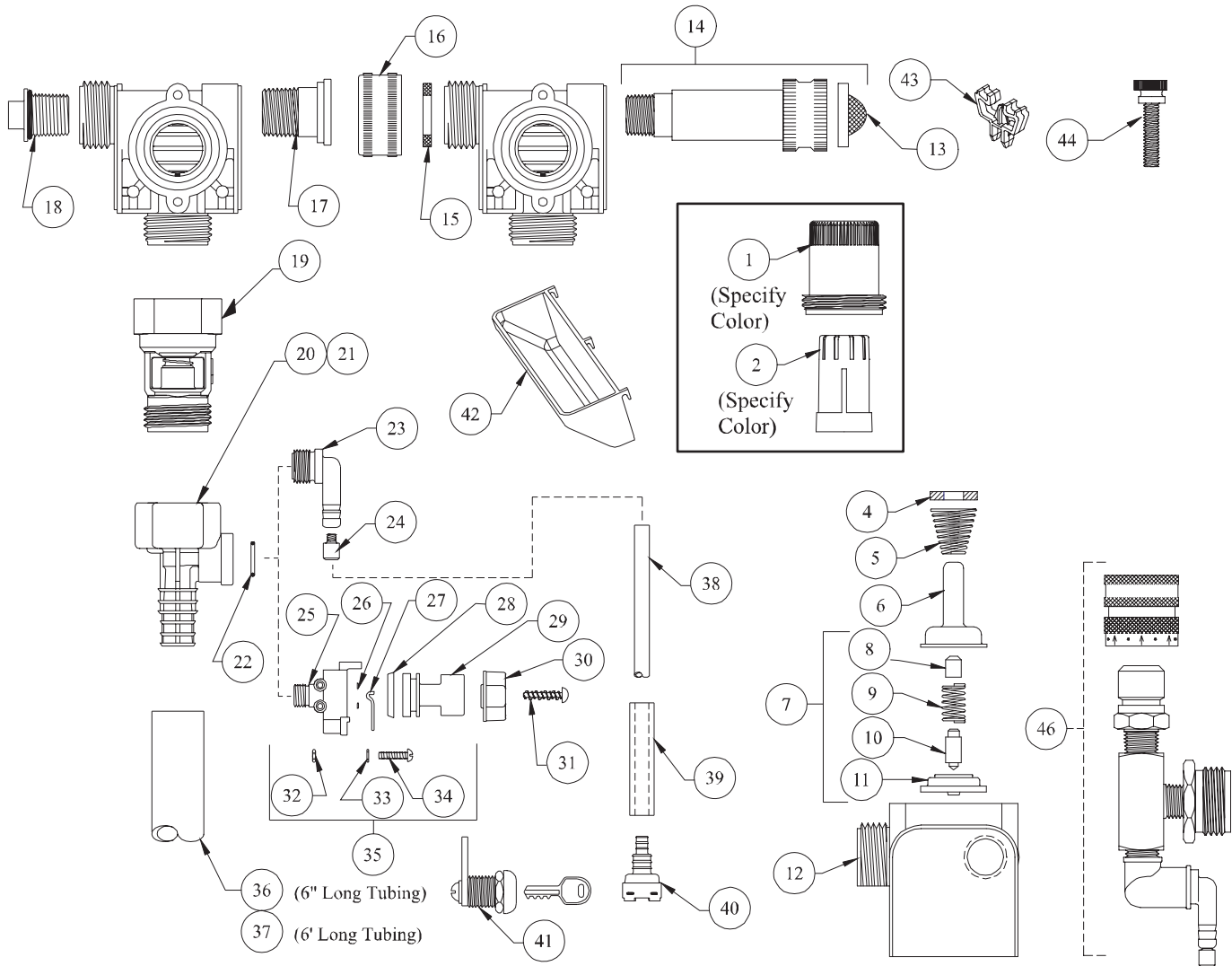
Betco products are warranted against defective material and workmanship under normal use and service for one year from the date of manufacture. This limited warranty does not apply to any products that have a normal life shorter than one year or failure and damage caused by chemicals, corrosion, physical abuse, or misapplication. Rubber and synthetic rubber parts such as "o"-rings, diaphragms, PVC tubing, and gaskets are considered expendable and are not covered under warranty. This warranty is extended only to the original buyer of BETCO products. If products are altered or repaired without prior approval of BETCO, this warranty is void.

Defective units or parts should be returned to the factory with transportation prepaid. If inspection shows them to be defective, they will be repaired or replaced without charge, F.O.B. factory. BETCO assumes no liability for damages. Return merchandise authorization number must be granted in advance of returned units for repair or replacement (See "Merchandise Returns" above).

INSTALLATION INSTRUCTIONS



INSTALLATION INSTRUCTIONS



QTY.	PART NO.	DESCRIPTION
1	66-139	Magnet Housing (Specify Color)
2	66-140	Push Button (Specify Color)
4	63-35	Magnet
5	63-36	Spring
6	41-7-25	Enclosing Tube
7	63-87	Valve Repair Kit
8	63-37	Spacer
9	41-1-8	Kick-off spring
10	63-38	Plunger
11	41-15-5	Diaphragm
12	63-39	Valve Body
13	100-38	Strainer Washer
14	63-32-2	Water Inlet Adapter Kit
15	150-6	Rubber Washer
16	65-10	Garden Hose Thread Coupling
17	99-7-1	Hose Fitting Stem
18	66-153	Pipe Plug & O-Ring Assy.
19	16-30	Action Gap Assembly
20	61-22GAP-2	4 GPM (1/4" Barb) Proportioner (Gray)
21	61-99GAP-3	1 GPM Proportioner (Green) Less Inlet Barb
22	63-78	O-Ring
23	63-79	Inlet Barb (1/4" Barb)
24	100-15K	Metering Tip Kit-14 Sizes
25	63-98	Selector Valve Body
26	25-77	O-Ring

QTY.	PART NO.	DESCRIPTION
27	63-100	Retainer Spring
28	63-51	"U" Cup
29	63-101-2	Knob
30	63-111-2	Selector Knob
31	58-60	#6 Hi Lo Screw 1/2" Lg.
32	66-13	Nut
33	63-104	Washer
34	63-103	Screw
35	63-96-3	Selector Valve Assembly
36	16-3-6	1/2" I.D. X 6" Lg. Vinyl Outlet Tube (1 GPM Only)
37	61-21	1/2" ID X 6' Lg. Vinyl Outlet Tube (4 GPM Only)
38	100-12-13	1/4" ID X 32" Lg. Vinyl Supply Tubing
39	61-107-2	Ceramic Weight
40	100-16E	Foot Valve
41	66-21	Cabinet Lock
42	66-64	Drip Tray
43	67-4-1	Box Clip
44	66-63	Thumbscrew

ACCESSORIES

QTY.	PART NO.	DESCRIPTION
46	68-6-QD2	Pressure Indicating Tec