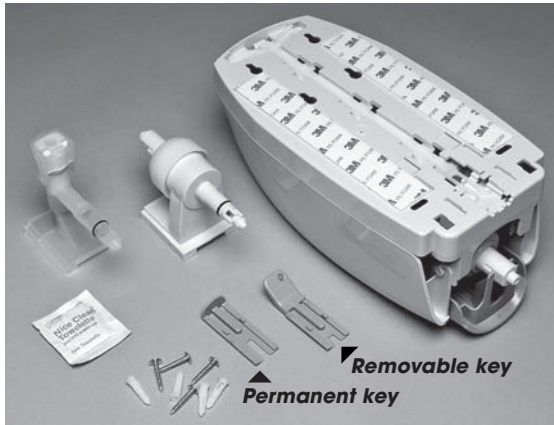
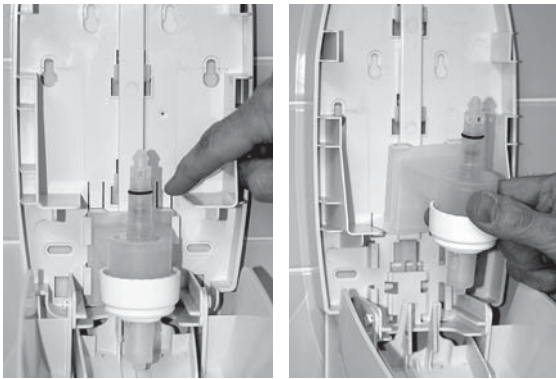


## What's included:



**Liquid or foam pumps, alcohol towelette, wall anchors and screws, foam adhesive strips and dispenser keys.**

## To Change the Pump Assembly:



**Before replacing pump assembly, remove bag of product from dispenser/pump.**

1. Depress tabs in the back plate of the dispenser and push pump assembly up to remove the pump assembly.
2. To insert a new pump assembly, ensure that the new pump assembly is flush to the back plate and is aligned with pump assembly brackets.
3. Gently push down until the back plate tabs snap into place to secure new pump assembly.

# Clario®

HAND CARE PROGRAM

# Clario®

DISPENSER INSTRUCTIONS



## BETCO®

**INNOVATIVE  
CLEANING TECHNOLOGIES**

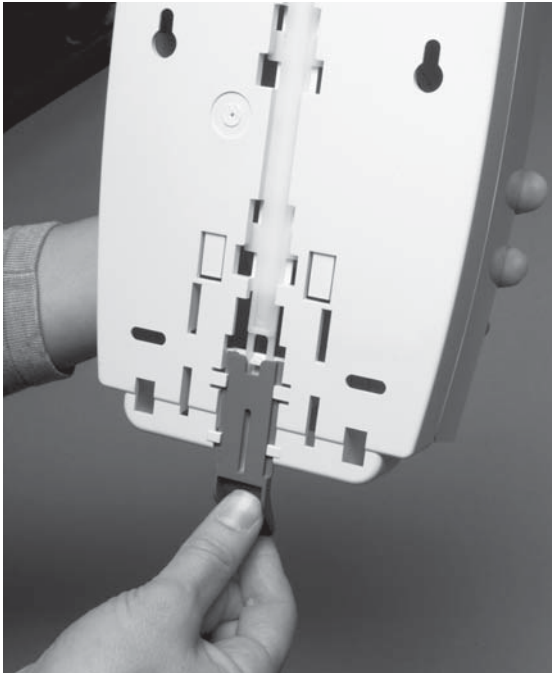
©2011 Betco Corporation  
All Rights Reserved.  
1001 Brown Avenue  
Toledo, Ohio 43607-0127  
888-GO BETCO • [www.betco.com](http://www.betco.com)

## BETCO®

## CAUTION:

*Correct installation of this unit to ensure proper function and safety is the responsibility of the installer. Please completely read and understand this cautionary note and all installation or maintenance instructions before proceeding with installation.*

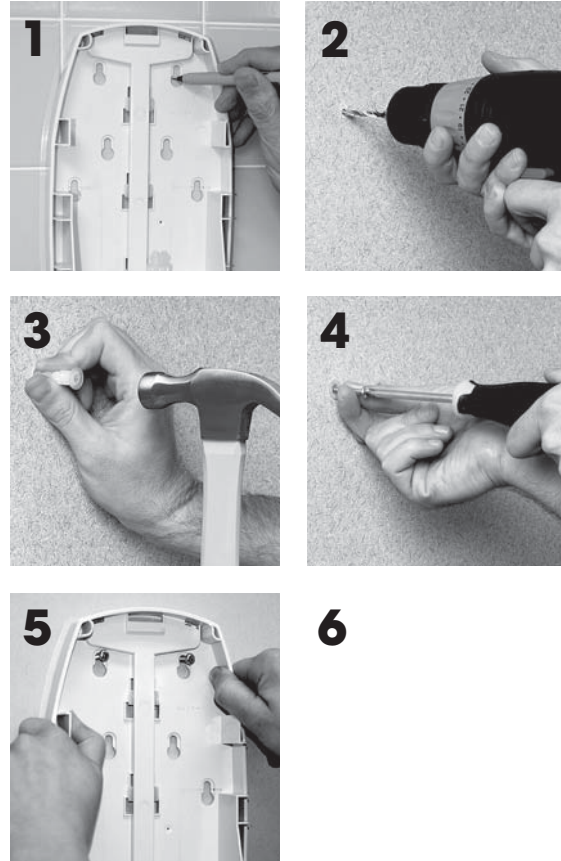
## Opening the Clario® Dispenser:



1. To open the dispenser cover, insert key between wall and back plate at the bottom of the dispenser. (Before dispenser is installed, turn dispenser over and insert key into back plate.)
2. **Note: There are two types of keys, one removable and one permanent.** When using either key, gently push up on the permanent or removable key until the cover is released at the top. **Once the permanent key is inserted, it cannot be removed from the dispenser.**

## Mounting the Clario™ Dispenser with Anchors and Screws:

*(Recommended mounting method, anchors and screws are included.)*



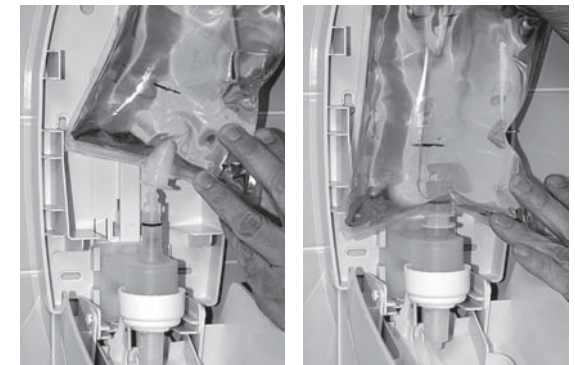
1. Using dispenser as a template, mark hole locations on wall. (To be in compliance with ADA regulations, the dispenser should be mounted no more than 48" from the ground.)
2. Drill (4) 3/16" diameter holes.
3. Tap plastic anchors provided into holes.
4. Place screws into anchors and tighten half the screw length.
5. Hang dispenser over screws using the keyholes in the back plate of the dispenser.
6. Tighten screws to secure the dispenser.

## Mounting the Clario® Dispenser with Double-Sided Tape:

*(Double-sided tape should only be used to secure the unit to smooth, flat, dry surfaces that do not have chemical residue or coatings on them. Surfaces should be thoroughly clean and dry.)*

1. Wipe surface with supplied alcohol wipe immediately before applying tape.
2. **(To be in compliance with ADA regulations, the dispenser should be mounted no more than 48" from the ground.)** Peel off paper from back of tape. Press dispenser firmly to the wall and hold for several seconds to make sure tape has completely adhered to the wall.
3. It is recommended that the dispenser is not filled with soap for 24 hrs. to ensure that the tape has completely adhered to the dispenser before weight is added to the dispenser.

## Installing Product into the Clario® Dispenser with QCT™ Connector:



1. Push valve end of bag down onto the pump assembly until it clicks and bag is fully pressed down so pump is inserted completely into the pouch.
2. If needed, gently tuck the corners of the bag to ensure complete closure of dispenser cover.